



PORTS AND YACHTING DIRECTORATE

LOCAL NOTICE TO MARINERS NO 132 of 2018

Our Ref: **TM/PYD/63/95**

14 December 2018



Transport Malta

Malta Transport Centre
Marsa, MRS 1917
Malta

Tel: (356) 2122 2203
Fax: (356) 2125 0365
Email: info.tm@transport.gov.mt

www.transport.gov.mt

Sediment sampling from seabed at Rinella Bay in Grand Harbour

The Ports and Yachting Directorate, Transport Malta notifies mariners that sediment samples will be taken from the seabed at Rinella Bay in the Grand Harbour, between Friday 21st December 2018 and Monday 31st December 2018

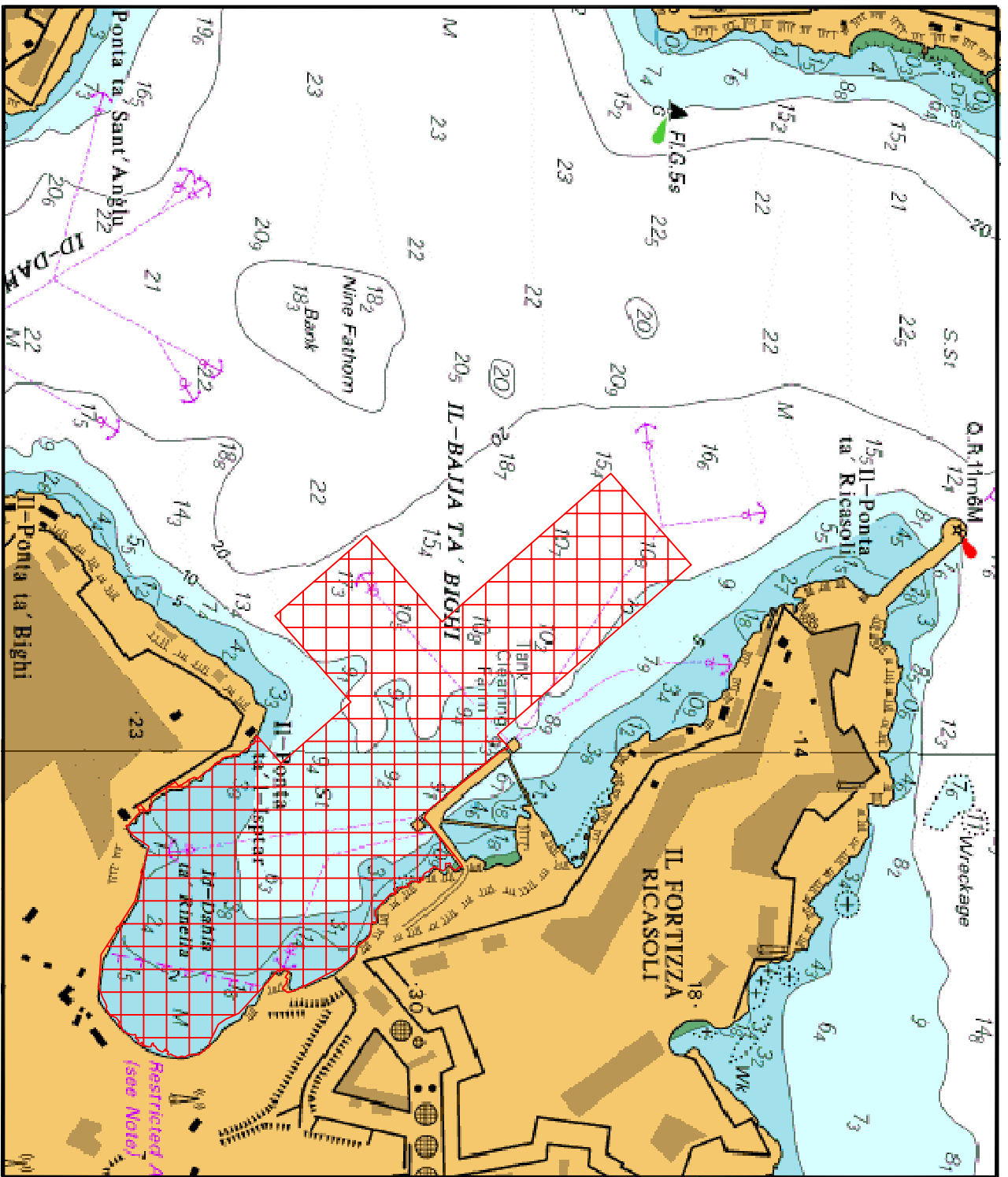
The sampling shall be carried out within the area shown hatched on attached chart.

The work consists of taking samples of seawater and marine sediment using the vessel Atlantis II and will also involve the use of divers. The vessel will display the International Code of Signals flag "A"

Masters and operators of vessels are advised to keep a sharp lookout, navigate with caution and slow speed and give the vessel and divers a wide berth. Masters and operators are to comply with any instructions given by Valletta Port Control (Valletta VTS) on VHF Channel 12.

Chart affected: **BA 177**

Positions referred to WGS 84 DATUM.



© British Crown Copyright 1970, 1983, 1986, 1988, 1999, 2000
All rights reserved.

The UK Hydrographic Office makes the accompanying data
Available to Malta Maritime Authority (Transport Malta)
Under the terms and conditions of agreement HO 1427/020930/01.

DISCLAIMER

Whilst the UK Hydrographic Office has endeavoured to ensure
That the material supplied is suitable for the purpose described,
It accepts no liability (to the maximum extent permitted by law)
For any damage or loss of any nature arising from its use.
The material supplied is used entirely at the Recipient's own risk.