



Transport Malta

PORTS AND YACHTING DIRECTORATE

LOCAL NOTICE TO MARINERS NO 129 of 2018

Our Ref: **TM/PYD/63/95 Vol VI**

Malta Transport Centre
Marsa, MRS 1917
Malta

Tel: (356) 2122 2203
Fax: (356) 2125 0365
Email: info.tm@transport.gov.mt

www.transport.gov.mt

06 December 2018

Sediment sampling from seabed at different localities

The Ports and Yachting Directorate, Transport Malta notifies mariners that sediment samples will be taken from the seabed at different localities, starting with immediate effect and are to be completed by Friday 18th January 2019.

The sampling shall be carried out from the workboat Goldfinder and will take place at points A, B, C and D, as shown on attached charts.

POINT	LATITUDE (N)	LONGITUDE (E)
A (chart 1)	35° 53'.026	14° 31'.231
B (chart 2)	35° 54'.042	14° 30'.594
C (chart 3)	35° 54'.516	14° 30'.310
D (chart 4)	36° 01'.465	14° 17'.886

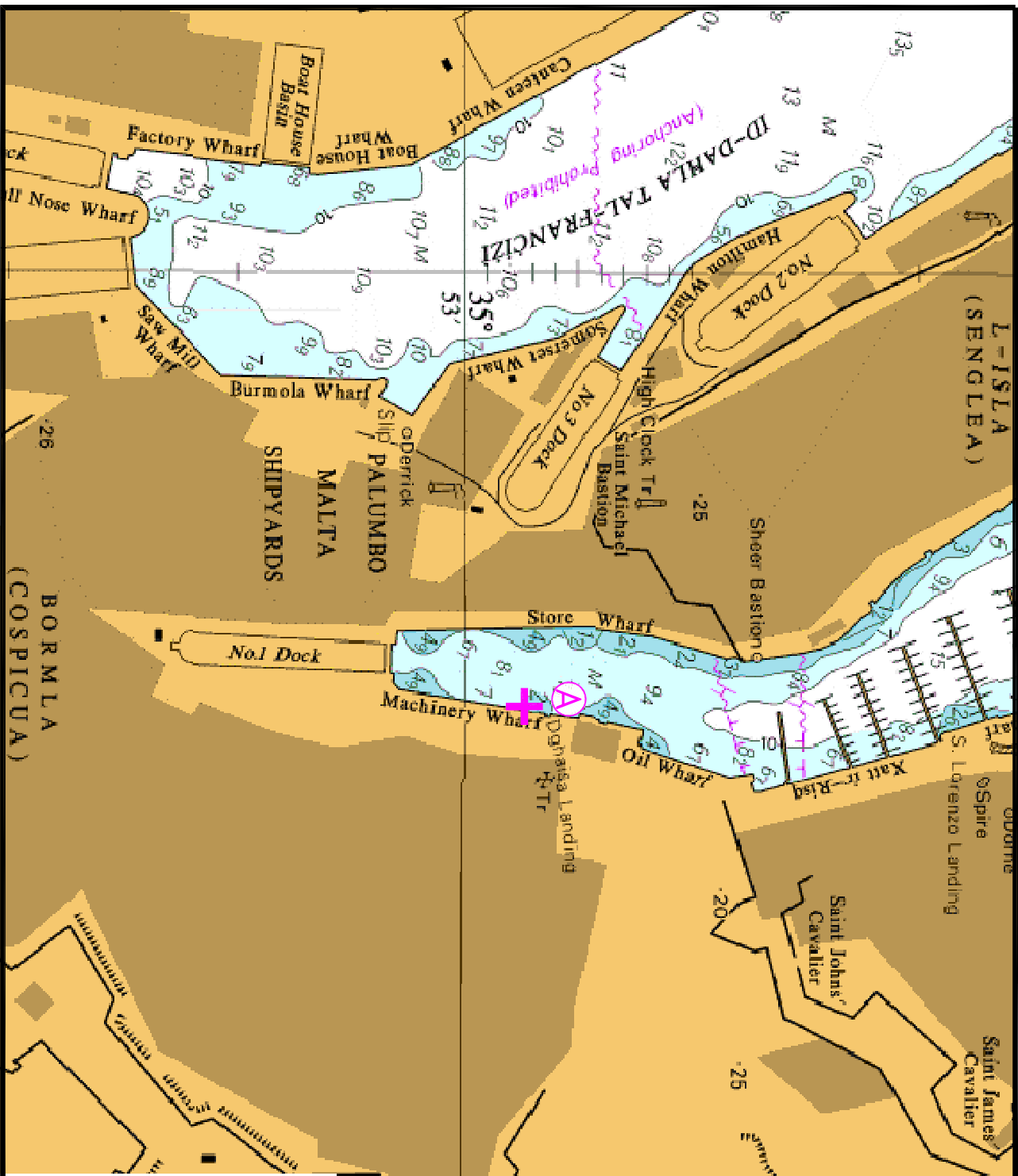
Owners of vessels that are moored or have a mooring in the vicinity of the above mentioned points are to coordinate with the contractor to shift temporary while the work is in progress in the area

Masters and operators of vessels are advised to keep a sharp lookout, navigate with caution and slow speed when in the vicinity and to give the workboat a wide berth.

They are to comply with instructions given by Valletta Port Control (Valletta VTS) on VHF Channel 12.

Chart affected: **BA 177, 211D**

Positions referred to WGS 84 DATUM.

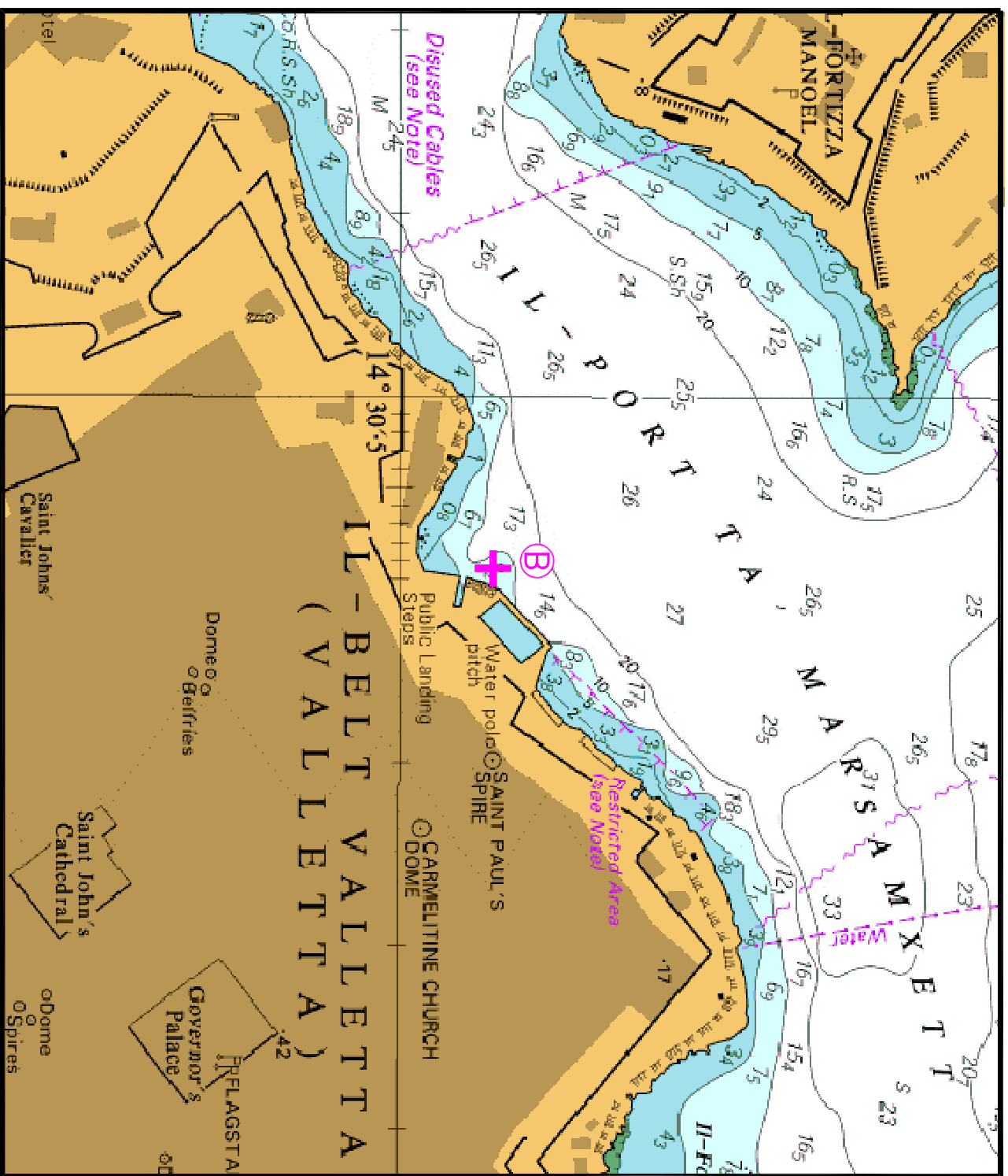


© British Crown Copyright 1970, 1983, 1986, 1988, 1999, 2000
All rights reserved.

The UK Hydrographic Office makes the accompanying data
Available to Malta Maritime Authority (Transport Malta)
Under the terms and conditions of agreement HD 1427/020930/01.

DISCLAIMER

While the UK Hydrographic Office has endeavoured to ensure
That the material supplied is suitable for the purpose described,
It accepts no liability (to the maximum extent permitted by law)
For any damage or loss of any nature arising from its use.
The material supplied is used entirely at the Recipient's own risk.

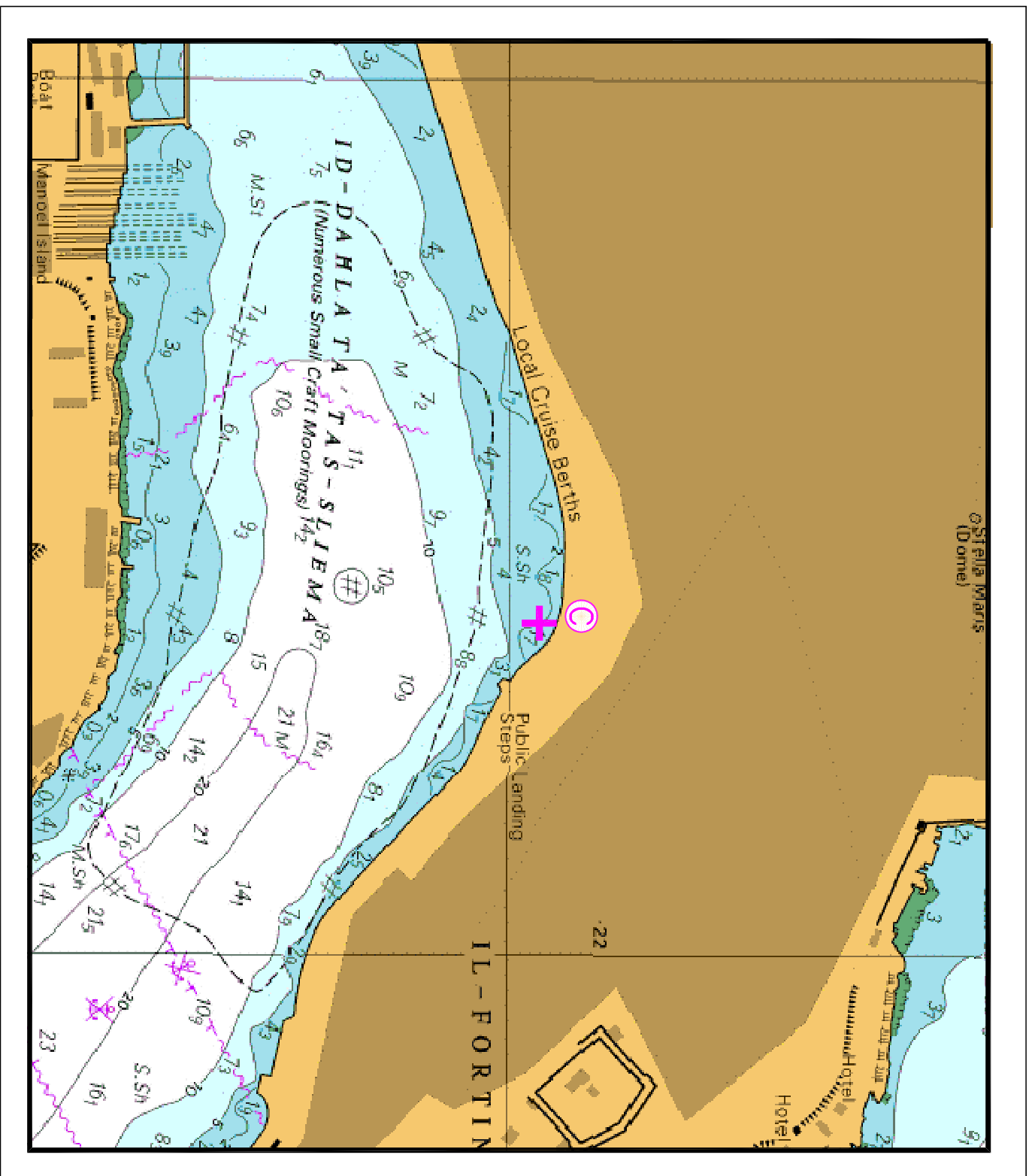


© British Crown Copyright 1970, 1983, 1986, 1988, 1999, 2000
All rights reserved.

The UK Hydrographic Office makes the accompanying data
Available to Malta Maritime Authority (Transport Malta)
Under the terms and conditions of agreement HO 1427/020930/01.

DISCLAIMER

While the UK Hydrographic Office has endeavoured to ensure
That the material supplied is suitable for the purpose described,
It accepts no liability (to the maximum extent permitted by law)
For any damage or loss of any nature arising from its use.
The material supplied is used entirely at the Recipient's own risk.



© British Crown Copyright 1970, 1983, 1986, 1988, 1999, 2000
 All rights reserved.

The UK Hydrographic Office makes the accompanying data available to Malta Maritime Authority (Transport Malta) under the terms and conditions of agreement HO 1427/020930/01.

DISCLAIMER

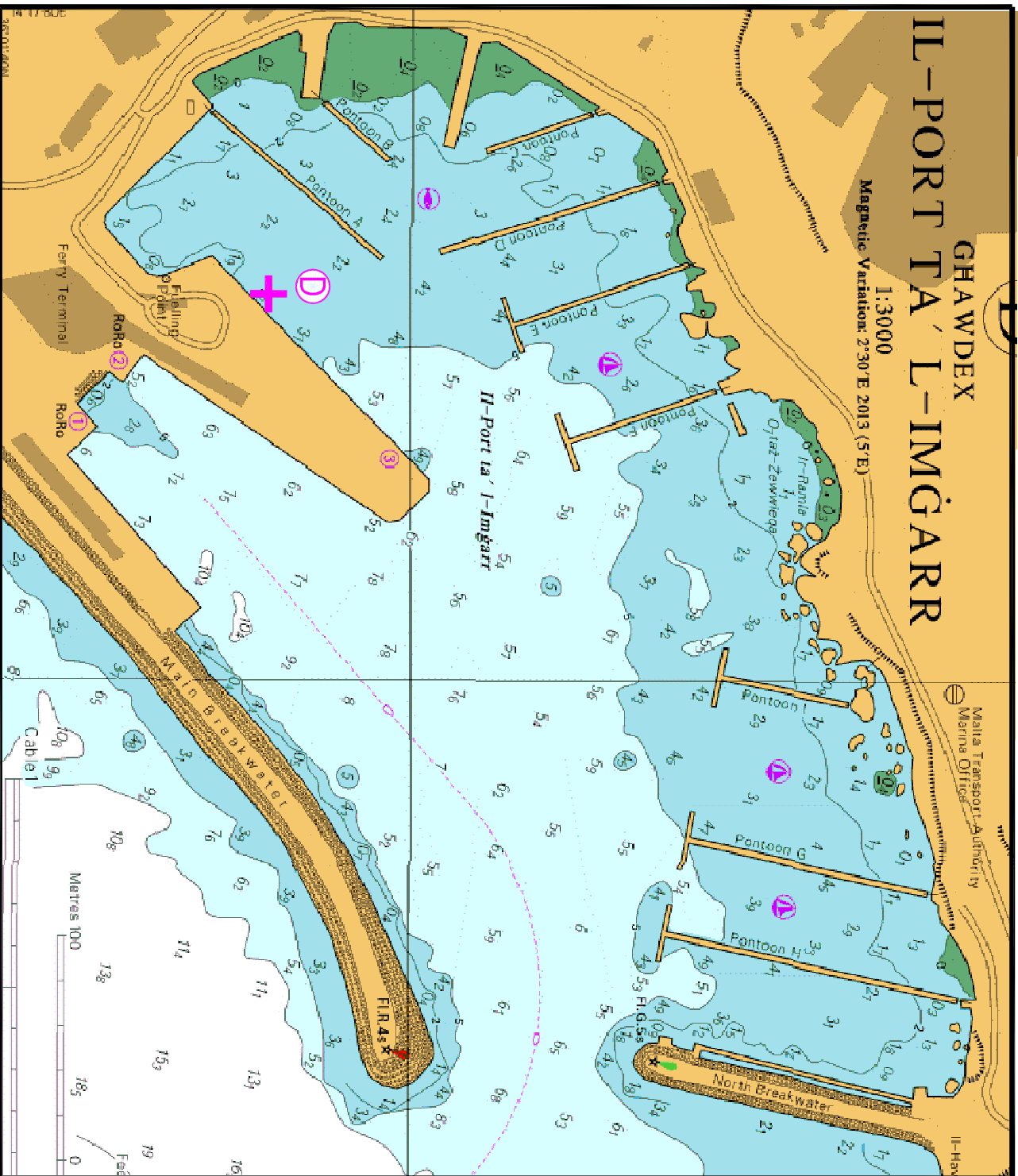
While the UK Hydrographic Office has endeavoured to ensure that the material supplied is suitable for the purpose described, it accepts no liability (to the maximum extent permitted by law) for any damage or loss of any nature arising from its use.

The material supplied is used entirely at the Recipient's own risk.

Chart 3

GHAWDEX IL-PORT TA' L-IMGARR

1:3000
Magnetic Variation: 2°30' E 2013 (S.E)



© British Crown Copyright 1970, 1983, 1986, 1988, 1999, 2000
All rights reserved.

The UK Hydrographic Office makes the accompanying data
Available to Malta Maritime Authority (Transport Malta)
Under the terms and conditions of agreement HO 1427/020930/01.

DISCLAIMER

While the UK Hydrographic Office has endeavoured to ensure
That the material supplied is suitable for the purpose described,
It accepts no liability (to the maximum extent permitted by law)
For any damage or loss of any nature arising from its use.
The material supplied is used entirely at the Recipient's own risk.