



PORTS AND YACHTING DIRECTORATE

Transport Malta

## LOCAL NOTICE TO MARINERS NO 111 of 2018

Our Ref: **TM/PYD//220/94 Vol. II**

Malta Transport Centre  
Marsa, MRS 1917  
Malta

Tel: (356) 2122 2203  
Fax: (356) 2125 0365  
Email: [info.tm@transport.gov.mt](mailto:info.tm@transport.gov.mt)

[www.transport.gov.mt](http://www.transport.gov.mt)

27 September 2018

### Rolex Middle Sea Race 2018

The Ports and Yachting Directorate, Transport Malta, notifies that the Royal Malta Yacht Club will be holding the Rolex Middle Sea Race on Saturday, 20<sup>th</sup> October 2018. In addition a coastal race will also be held on Wednesday 17<sup>th</sup> October 2018.

The race programme is as follows:

**a. Wednesday, 17<sup>th</sup> October 2018**

The Coastal Race starts at 1000 hours.

The start is from Marsamxett Harbour, and depending on the weather conditions, will proceed either to Comino and/or Gozo or to Munxar and/or Filfa and finish at Marsamxett Harbour.

Mariners are requested to keep the Marsamxett fairway clear during the start of the Coastal race and to keep a sharp lookout during the remaining hours of Wednesday 17<sup>th</sup> October 2018.

**b. Saturday, 20<sup>th</sup> October 2018**

The Rolex Middle Sea Race starts at approximately 1100 hours.

The start is from the Grand Harbour, at an imaginary line from an inflatable buoy near Saint Angelo Point to the Valletta Saluting Battery mast.

The yachts shall then proceed in a North - Easterly direction along the Channel in the Grand Harbour to a yellow inflatable buoy, bearing the sponsor's logo, positioned outside the Saint Elmo Breakwater. The buoy shown as 1 on attached charts 1 will be in the following approximate position:



Transport Malta

**LATITUDE (N)**

35° 54'.160

**LONGITUDE (E)**

014° 31'.540

The yachts shall then proceed in a North – Westerly direction towards St George's shoals where a second yellow inflatable buoy, bearing the sponsor's logo will be positioned. The buoy shown as 2 on the attached chart 1 will be in the following approximate position:

**LATITUDE (N)**

35° 55'.650

**LONGITUDE (E)**

014° 30'.070

They will follow the course as shown on the attached chart 1

The yachts shall then proceed in a North – North Easterly direction towards Sicily.

Mariners are to navigate with caution and to keep a sharp lookout when in the vicinity of the above-mentioned courses and when sighted, give the participants a wide berth.

They are also to keep at least 200m away from the inflatable buoys 1 and 2 mentioned above.

Mariners are advised that on Saturday 20<sup>th</sup> October 2018 between 0900 hours and 1500 hours or such time as may be communicated by Valletta Port Control (Valletta VTS) on VHF channel 12, if earlier, the Grand Harbour shall be closed for all traffic not directly related to the race.

During these times all other vessels shall be required to remain within designated areas in the inner harbour up to Ras Hanzir, in Dockyard Creek, Kalkara Creek and Rinella Bay. (Areas are shown hatched in magenta on attached chart 2).

No vessel will be allowed at the quay next to the fish market as this quay is being reserved for emergency vessels only.

Mariners are instructed to cooperate with the organizers and Maritime Enforcement officers in the area. Moreover they are to obey any instructions given by Valletta Port Control (Valletta VTS) on VHF channel 12.

Positions are in WGS 84 Datum.

Chart affected: **BA Chart 177.**

©British Crown Copyright 1970, 1983, 1986, 1988, 1999, 2000.  
All rights reserved

The UK Hydrographic Office makes the accompanying data available to Transport Malta under the terms and conditions of agreement HD 1427/080930/01

**DISCLAIMER**

While the UK Hydrographic Office has endeavoured to ensure that the material supplied is suitable for the purposes described, it accepts no liability (to the maximum extent permitted by law) for any damage or loss of any nature arising from its use. The material supplied is used entirely at the Recipient's own risk.

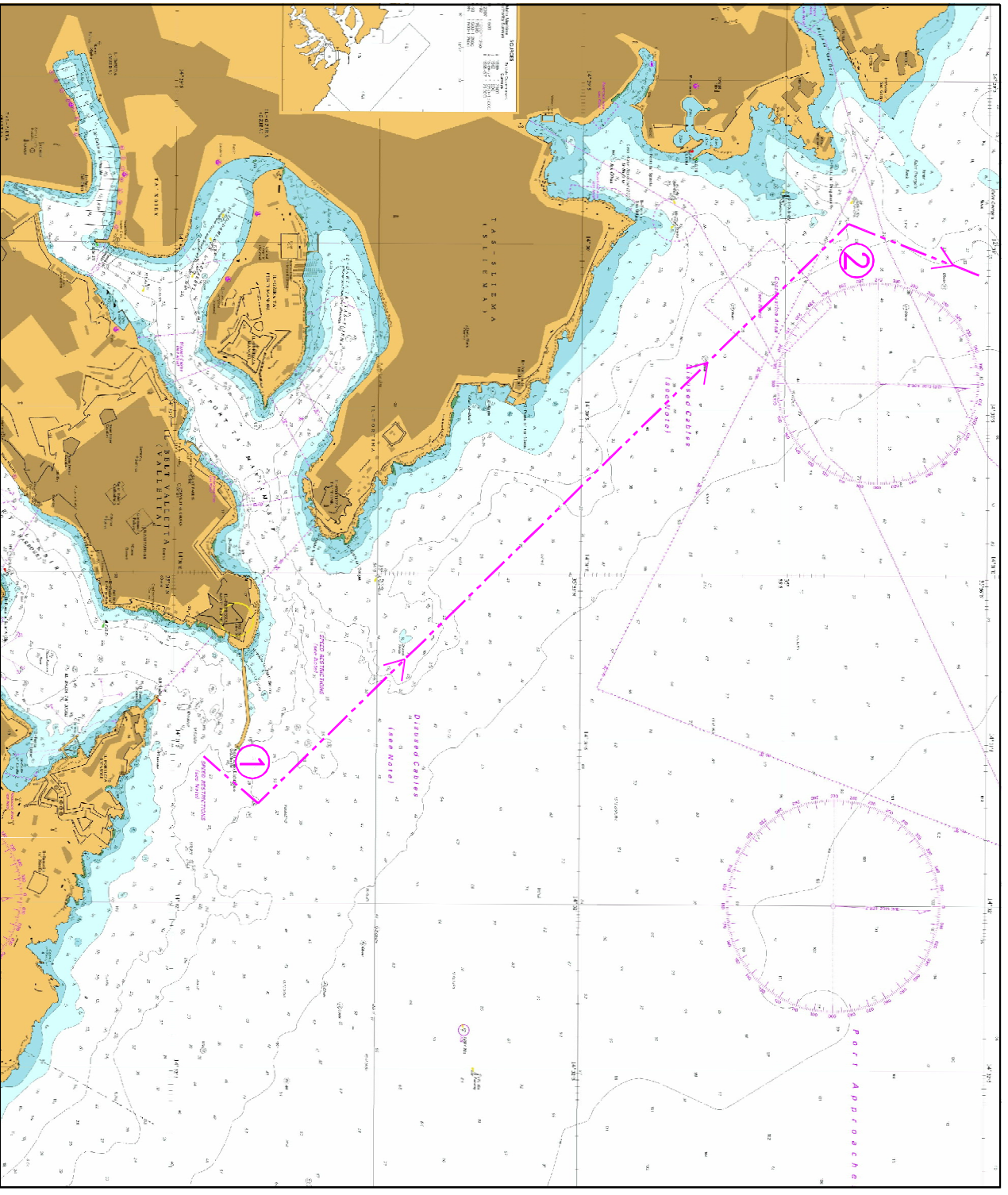
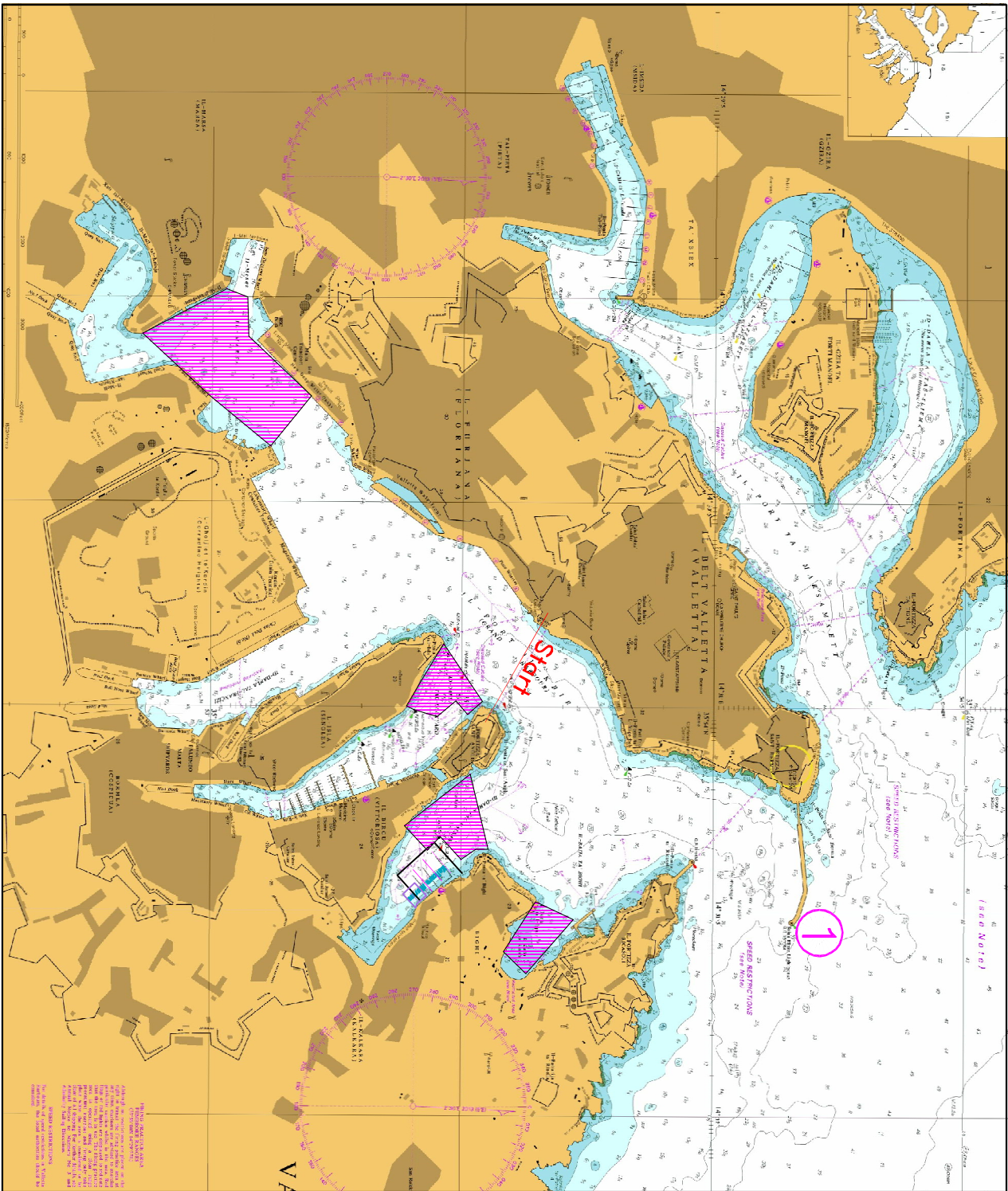


Chart 1



©British Crown Copyright 1970, 1983, 1986, 1988, 1999, 2000.  
 All rights reserved

The UK Hydrographic Office makes the accompanying data available to Transport Malta under the terms and conditions of agreement HD 1427/080930/01

**DISCLAIMER**

While the UK Hydrographic Office has endeavoured to ensure that the material supplied is suitable for the purposes described, it accepts no liability (to the maximum extent permitted by law) for any damage or loss of any nature arising from its use. The material supplied is used entirely at the Recipient's own risk.

Chart 2