



PORTS AND YACHTING DIRECTORATE

Transport Malta

## LOCAL NOTICE TO MARINERS NO 093 of 2018

Our Ref: **TM/PYD/26/95/7**

Malta Transport Centre  
Marsa, MRS 1917  
Malta

Tel: (356) 2122 2203  
Fax: (356) 2125 0365  
Email: [info.tm@transport.gov.mt](mailto:info.tm@transport.gov.mt)

22 August 2018

[www.transport.gov.mt](http://www.transport.gov.mt)

### Firework Displays in Grand Harbour – Senglea Feast

The Ports and Yachting Directorate, Transport Malta, notifies mariners that firework displays will be let off from 3 barge next to each other moored 200m off Il-Ponta ta' Bighi, centered on position Y in attached chart.

The firework displays will be let off on the following dates and times:-

Tuesday 4 <sup>th</sup> September 2018	between 0800 hours and 0830 hours, between 1200 hours and 1230 hours and between 2040 hours and 2130 hours.
Wednesday 5 <sup>th</sup> September 2018	between 0800 hours and 0830 hours, between 1200 hours and 1230 hours and between 2000 hours and 2100 hours.
Thursday 6 <sup>th</sup> September 2018	between 0800 hours and 0830 hours, between 1200 hours and 1230 hours and between 2145 hours and 2300 hours.
Friday 7 <sup>th</sup> September 2018	between 0800 hours and 0930 hours, between 1200 hours and 1230 hours, between 1715 hours and 1830 hours and between 2115 hours and 2345 hours.
Saturday 8 <sup>th</sup> September 2018	between 0800 hours and 0830 hours, between 1100 hours and 1130 hours, between 1200 hours and 1230 hours and between 1900 hours and 2230 hours.



Transport Malta

Potition	Latitude (N)	Longitude (E)
Y	35°53'.632	014°31'.281

The barges will be moored in position on Monday 3<sup>rd</sup> September 2018 and will be removed on Monday 10<sup>th</sup> September 2018. They will be left in position during the night and will be lit. A wide berth of 200 meters is requested from the barges on these days as the barges will be loaded with fireworks.

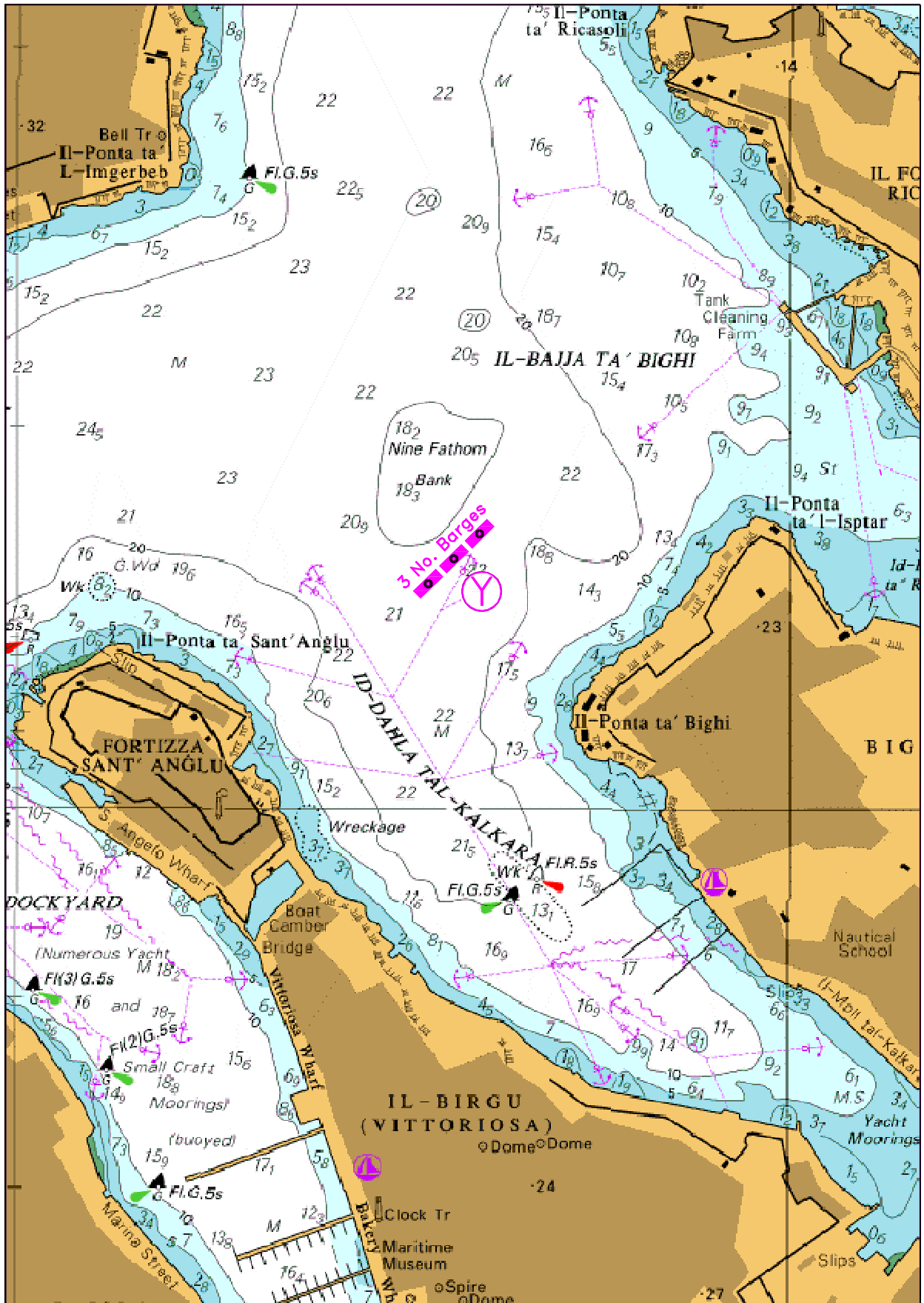
Vessel owners moored in Rinella Bay are to remove their vessels from Monday 3<sup>rd</sup> September 2018 to Monday 10<sup>th</sup> September 2018. Transport Malta will accept no Liabilities whatsoever for any damage caused to vessels that are left within Rinella Bay in the mentioned dates.

Transport Malta will accept no Liabilities whatsoever for any damage caused to vessels that are within the 200m distance during the above mentioned dates and times.

Mariners are to navigate with caution and slow speed. Instructions and directions given by Valletta Port Control (Valletta VTS) on VHF channel 12 are to be complied with.

Positions are referred to WGS 84 Datum.

Chart affected BA Chart 177.



©British Crown Copyright 1970, 1983, 1986, 1988, 1999, 2000.  
All rights reserved

The UK Hydrographic Office makes the accompanying data available to Transport Malta under the terms and conditions of agreement HD 1427/020930/0L.

**DISCLAIMER**

Whilst the UK Hydrographic Office has endeavoured to ensure that the material supplied is suitable for the purpose described, it accepts no liability (to the maximum extent permitted by law) for any damage or loss of any nature arising from its use. The material supplied is used entirely at the Recipient's own risk.