



PORTS AND YACHTING DIRECTORATE

Transport Malta

LOCAL NOTICE TO MARINERS NO 091 of 2018

Our Ref: **TM/PYD/132/89**

Malta Transport Centre
Marsa, MRS 1917
Malta

Tel: (356) 2122 2203
Fax: (356) 2125 0365
Email: info.tm@transport.gov.mt

www.transport.gov.mt

21 August 2018

Filming – Bravest Couple

The Ports and Yachting Directorate, Transport Malta, notifies all mariners and sea vessel operators that filming activities will take place alongside different wharves as indicated below.

Cirkewwa south quay

The area A, B, C and D shown hatched on attached chart A, is to be kept clear during the following dates and times:

Tuesday 28 th August 2018	from 0600 hours to 1800 hours,
Wednesday 29 th August 2018	from 0600 hours to 1800 hours,
Thursday 30 th August 2018	from 0600 hours to 1800 hours,
Sunday 2 nd September 2018	from 0600 hours to 1800 hours,
Thursday 6 th September 2018	from 0600 hours to 1800 hours,
Saturday 8 th September 2018	from 0600 hours to 1800 hours,
Friday 14 th September 2018	from 0600 hours to 1800 hours and
Monday 17 th September 2018	from 0600 hours to 1800 hours.

Boiler wharf

The area E, F, G and H shown hatched on attached chart B, is to be kept clear during the following dates and times:

Sunday 2 nd September 2018	from 0600 hours to 1800 hours,
Monday 3 rd September 2018	from 0600 hours to 1800 hours,
Sunday 9 th September 2018	from 0600 hours to 1800 hours and
Monday 10 th September 2018	from 0600 hours to 1800 hours.



Transport Malta

Barriera wharf

The area I, J, K and L shown hatched on attached chart C, is to be kept clear during the following dates and times:

Wednesday 12th September 2018 from 0600 hours to 1800 hours and
Thursday 13th September 2018 from 0600 hours to 1800 hours.

All mariners and sea vessel operators are to remove their vessels if they are anchored/moored within the mentioned areas and will not be allowed to anchor in close proximity of the above mentioned areas during filming.

Mariners and vessel operators are requested to keep a sharp look out when sailing in the vicinity of the above areas.

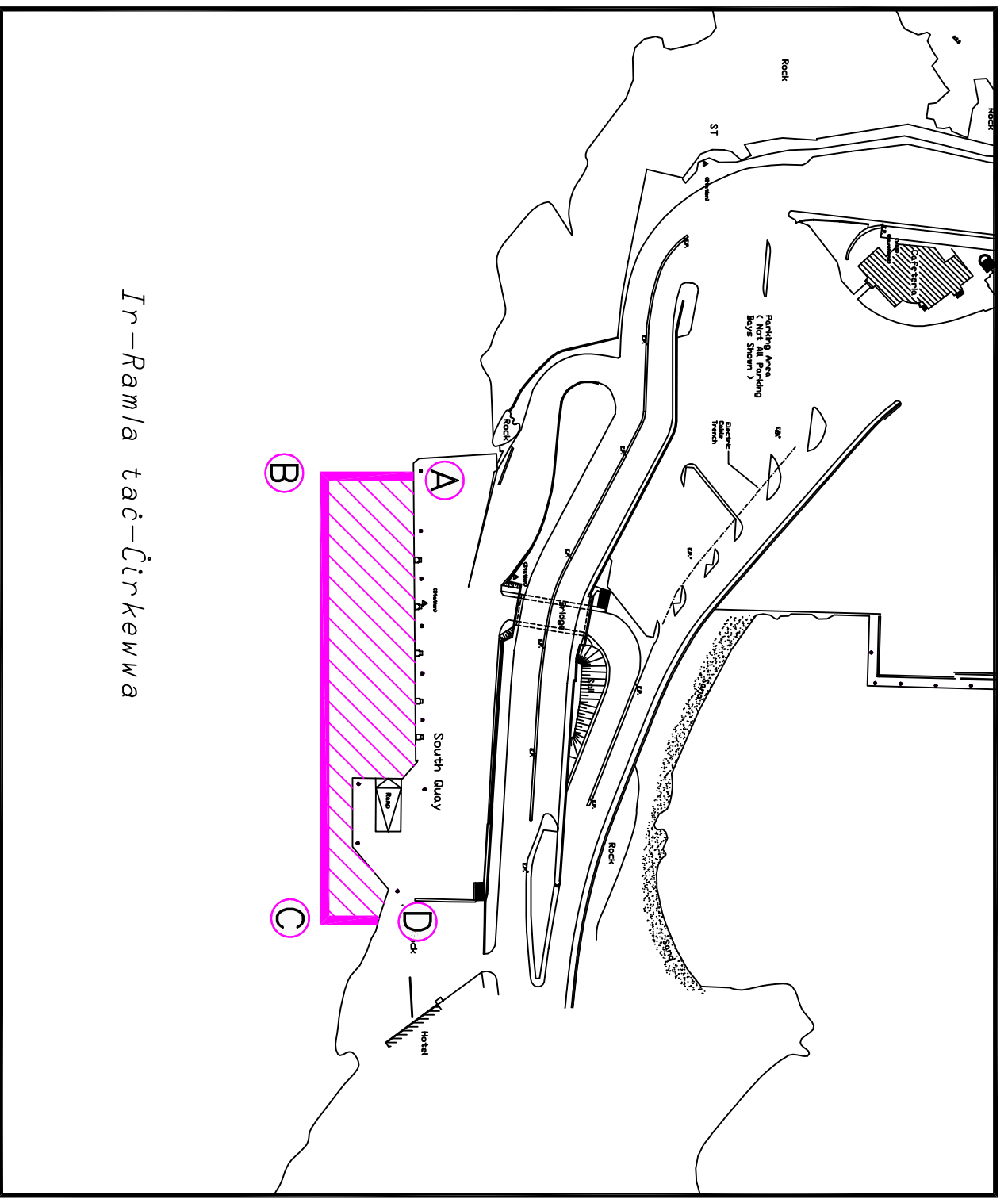
They are to keep watch on VHF Channel 12 and cooperate with the maritime enforcement officers in the area. They are to comply with instructions issued by Valletta Port Control (Valletta VTS) on VHF channel 12.

Charts affected: **BA 177, 211A, 2537 and 2538**

Transport Malta all rights reserved

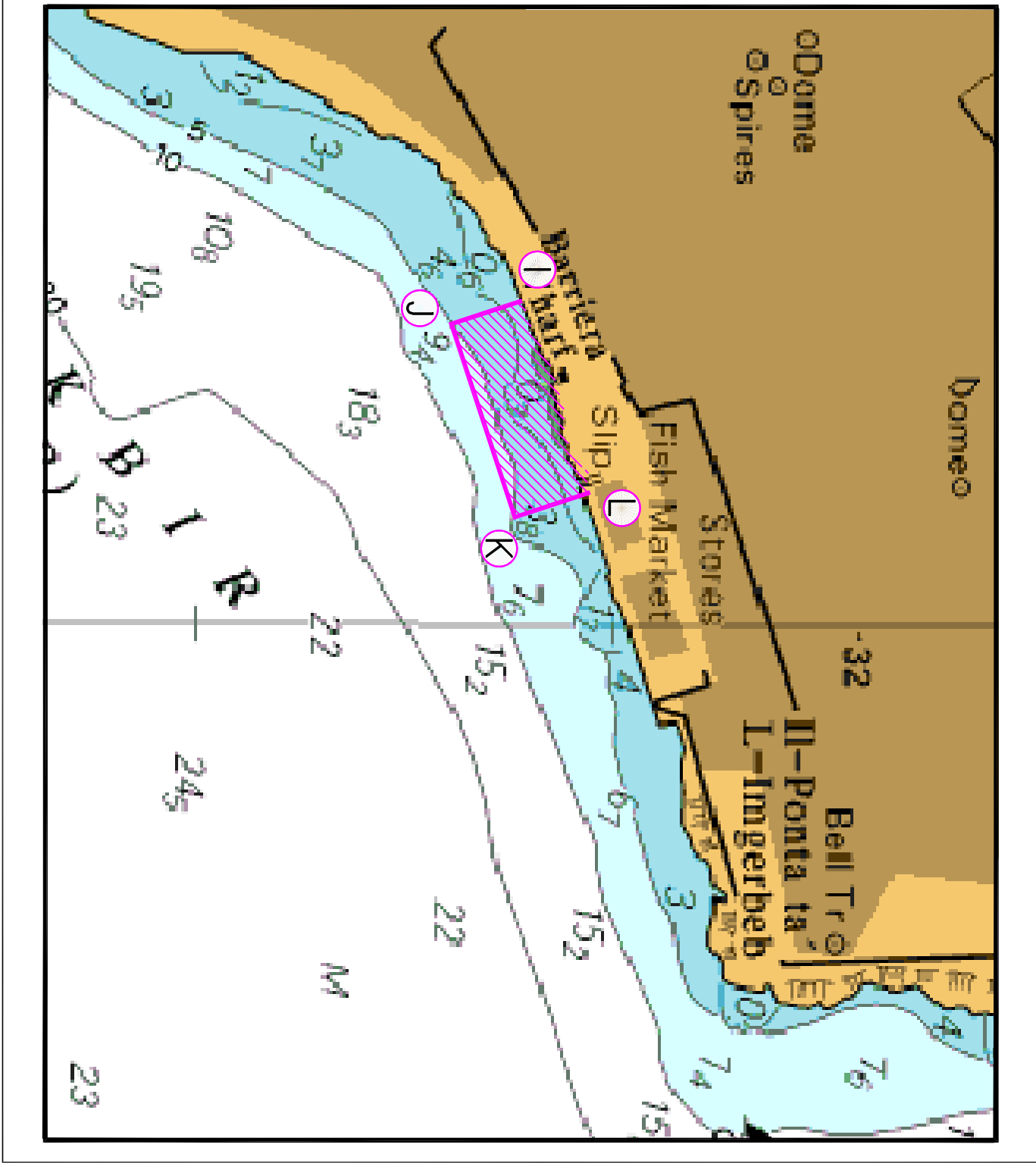
DISCLAIMER

Whilst the Ports and Yachting Directorate, Transport Malta has endeavoured to ensure that the material supplied is suitable for the intended use, the recipient shall be responsible for any loss or damage, in whole or in part, arising from its use. The material supplied is used entirely at the recipient's own risk.



Ir-Ramla taċ-Ċirkewwa

Chart A



©British Crown Copyright 1970, 1983, 1986, 1988, 1989, 1999, 2000.
All rights reserved

The UK Hydrographic Office makes the accompanying data available to Malta Maritime Authority under the terms and conditions of agreement HD 1427/020930/01.

DISCLAIMER

Whilst the UK Hydrographic Office has endeavoured to ensure that the material supplied is suitable for the purposes described, it accepts no liability (to the maximum extent permitted by law) for any damage or loss of any nature arising from its use. The material supplied is used entirely at the Recipient's own risk.

Chart C