



PORTS AND YACHTING DIRECTORATE

Transport Malta

LOCAL NOTICE TO MARINERS NO 083 of 2018

Our Ref: **TM/PYD/83/97 Vol IV**

Malta Transport Centre
Marsa, MRS 1917
Malta

Tel: (356) 2122 2203
Fax: (356) 2125 0365
Email: info.tm@transport.gov.mt

23 July 2018

www.transport.gov.mt

Transportation of Statue in Birzebbugia by vessel - 2018

The Ports and Yachting Directorate, Transport Malta, would like to notify mariners that the Statue of St. Peter will be loaded on a vessel from the breakwater at St George's Bay Birzebbugia (point A on attached chart) and transported from there to near the Birzebbugia waterpolo pitch (point B on attached chart), on Friday 3rd August 2018.

The transportation will start at 1900 hours and is expected to be completed by 2030 hours.

Mariners are to navigate with caution at slow speed and to keep a sharp lookout when in the vicinity to the above-mentioned events and when sighted they are to give the vessel carrying the statue a wide berth.

They are to obey any instructions that are issued by Marsaxlokk Port Control (Marsaxlokk VTS) on VHF channel 14 and the organisers.

Chart affected BA Chart 36.

verts above mean sea level.
 ILLITE-DERIVED POSITION (1984)
 as: IALA Maritime Buoyage System
 (to port).
 versus Mercator.

origin, scale, date and limits of the system used in compiling the chart are shown in the margin. The topography is derived chiefly from nautical charts and aerial photography.

VTLS see **SATELLITE-DERIVED POSITIONS**

Positions obtained from satellite navigation systems, such as the Global Positioning System (GPS), are normally referred to the World Geodetic System 1984 Datum. Such positions can be plotted directly on this chart.

CURRENT
 A very strong current sometimes sets north-east about 1 mile off the entrance to Marsaxlokk.

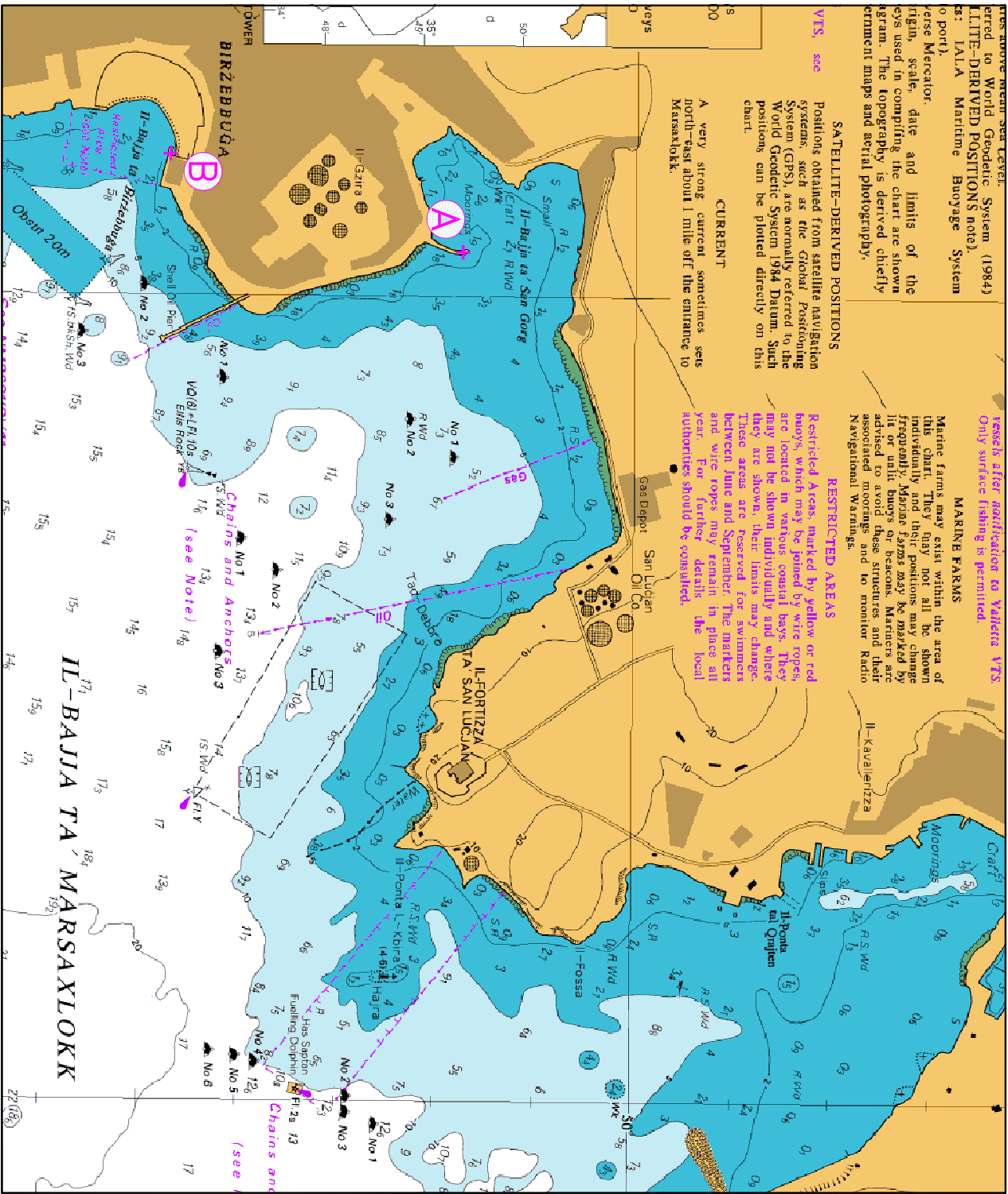
Vessels after notification to Valletta VTLS
 Only surface fishing is permitted.

MARINE FARMS

Marine farms may exist within the area of this chart. They are not all shown individually and their positions may change frequently. Marine Farms may be marked by lit or unlit buoys or posts only. Mariners are advised to avoid these structures and their associated moorings and to monitor Radio Navigational Warnings.

RESTRICTED AREAS

Restricted Areas, marked by yellow or red buoys, which may be joined by white ropes, are located in various coastal bays. They may not be shown individually and where they are shown, their limits may change. These areas are Reserved for swimmers between June and September. The markers and white ropes may remain in place all year. For further details, the local authorities should be consulted.



©British Crown Copyright 1970, 1983, 1986, 1988, 1989, 2000.
 All rights reserved

The UK Hydrographic Office makes the accompanying data available to Transport Malta under the terms and conditions of agreement HD 1427/020930/01.

DISCLAIMER

Whilst the UK Hydrographic Office has endeavoured to ensure that the material supplied is suitable for the purposes described, it accepts no liability (to the maximum extent permitted by law) for any damage or loss of any nature arising from its use. The material supplied is used entirely at the Recipient's own risk.