



PORTS AND YACHTING DIRECTORATE

## LOCAL NOTICE TO MARINERS NO 063 of 2018

Our Ref: **TM/PYD/26/96/1**

02 July 2018



**Transport Malta**

Malta Transport Centre  
Marsa, MRS 1917  
Malta

Tel: (356) 2122 2203  
Fax: (356) 2125 0365  
Email: [info.tm@transport.gov.mt](mailto:info.tm@transport.gov.mt)

[www.transport.gov.mt](http://www.transport.gov.mt)

### **Fireworks Display - Our Lady of Mount Carmel - Gzira feast**

The Ports and Yachting Directorate, Transport Malta notifies Mariners that fireworks will be let off from the foreshore in Sliema Creek, centered in Positions:

Position	Latitude (N)	Longitude (E)
A	35° 54'.319	014° 30'.321
B	35° 54'.258	014° 29'.792

The aerial fireworks displays will take place on the following dates and times.

From position A as shown on the attached chart,

Friday, 6<sup>th</sup> July 2018 from 0800 hours till 0820 hours, from 1200 hours till 1220 hours, from 1800 hours till 1845 hours and between 2200 hours and 2300 hours;

Saturday, 7<sup>th</sup> July 2018 from 0800 hours till 0820 hours, from 1200 hours till 1220 hours, from 1800 hours till 1820 hours and between 2200 hours and 2330 hours;

Sunday, 8<sup>th</sup> July 2018 from 0800 hours till 0820 hours, from 1200 hours till 1220 hours, from 1915 hours till 1945 hours and between 2000 hours and 2230;

The ground fireworks display will take place on the following dates and times.

From position B (near bridge) as shown on the attached chart,

Saturday, 7<sup>th</sup> July 2018 from 2300 hours till 0000 hours.

In view of the above, mariners are informed that navigation within 200 meters from the above position A in Marsamxett Harbour will be prohibited during the time of fireworks.

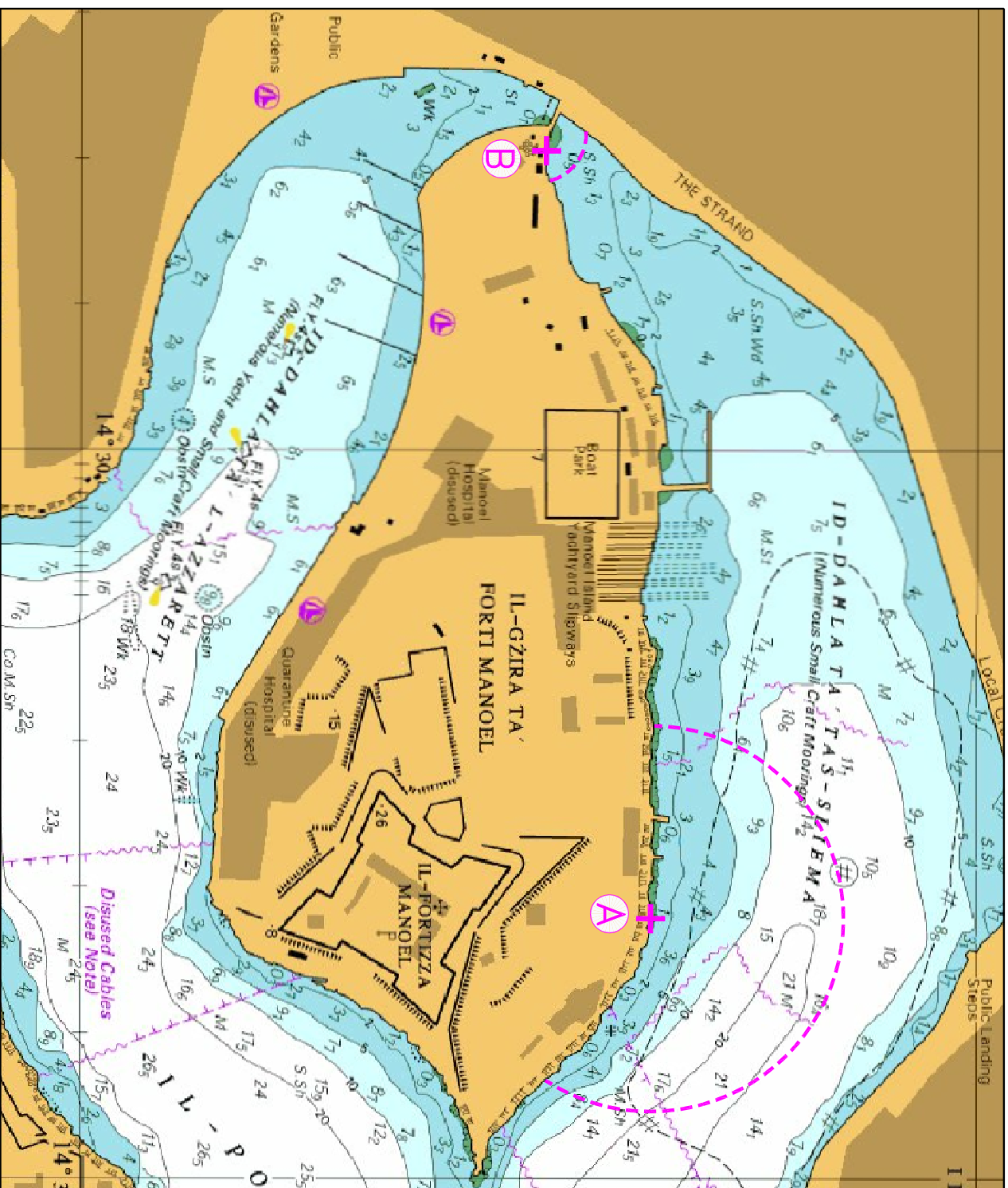


**Transport Malta**

All craft moored within 200m from point A and 50m from point B (as shown on the attached chart) are to be removed on the above-mentioned dates and times of the fireworks displays. The Ports and Yachting Directorate, Transport Malta will accept no Liabilities whatsoever for any vessels that are left lying in the area on the above mentioned dates and times

Mariners are to obey any instructions issued by Valletta Port Control (Valletta VTS) on VHF Channel 12 and Enforcement Officers in the area.

Chart Affected: BA 177



©British Crown Copyright 1970, 1983, 1986, 1988, 1999, 2000.  
All rights reserved

The UK Hydrographic Office makes the accompanying data available to Transport Malta under the terms and conditions of agreement HD 1427/020930/01.

#### DISCLAIMER

Whilst the UK Hydrographic Office has endeavoured to ensure that the material supplied is suitable for the purpose described, it accepts no liability (to the maximum extent permitted by law) for any damage or loss of any nature arising from its use. The material supplied is used entirely at the Recipient's own risk.