



PORTS AND YACHTING DIRECTORATE

LOCAL NOTICE TO MARINERS NO 050 of 2018

Our Ref: **TM/PYD/01/2012**

11 June 2018



Transport Malta

Malta Transport Centre
Marsa, MRS 1917
Malta

Tel: (356) 2122 2203
Fax: (356) 2125 0365
Email: info.tm@transport.gov.mt

www.transport.gov.mt

Barge Moored at Manoel Island.

The Ports and Yachting Directorate, Transport Malta, notifies mariners that a flat barge will be moored at Manoel Island as indicated on the attached chart.

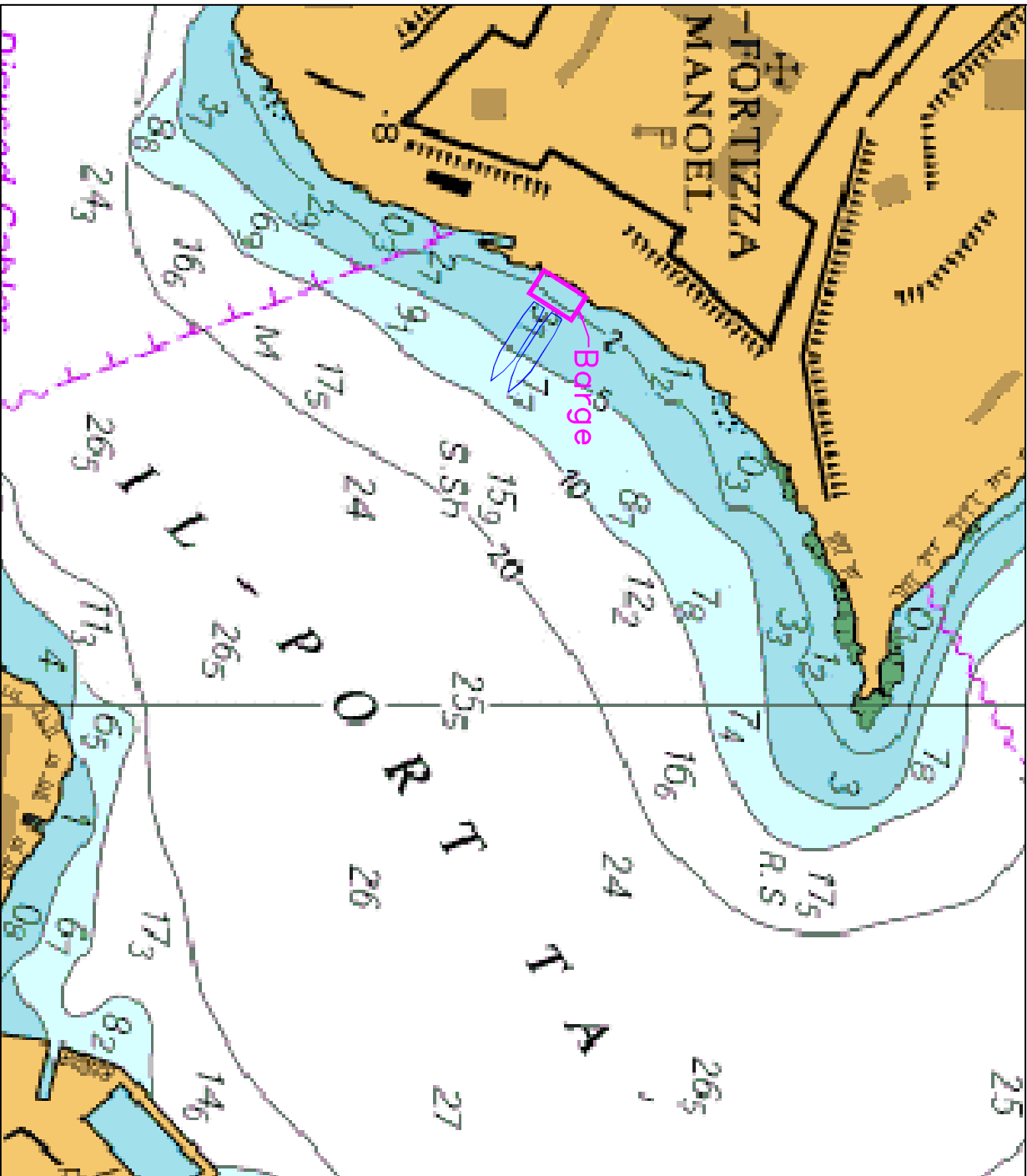
The barge will be moored in position on Thursday 14th June 2018 and removed on Saturday 16th June 2018.

Vessels with a maximum overall length of 40 meters will berth stern to this barge to unload passengers. The unloading of passengers will take place on Thursday 15th June 2018 in the afternoon.

Mariners and operators of vessels are advised to keep a sharp lookout, proceed with caution, at very slow speed and give the area a wide berth of at least 100 metres from the coast.

Moreover, they are to comply with instructions given by Valletta Port Control (Valletta VTS) on VHF Channel 12.

Chart affected: **BA 177**



©British Crown Copyright 1970, 1983, 1986, 1988, 1989, 1999, 2000.
All rights reserved

The UK Hydrographic Office makes the accompanying data available to Transport Malta under the terms and conditions of agreement HD 1427/080930/01

DISCLAIMER

While the UK Hydrographic Office has endeavoured to ensure that the material supplied is suitable for the purposes described, it accepts no liability for the maximum extent permitted by law for any damage or loss of any nature arising from its use. The material supplied is used entirely at the Recipient's own risk.