



PORTS AND YACHTING DIRECTORATE

LOCAL NOTICE TO MARINERS NO 049 OF 2018

Our Ref: **TM/PYD/83/97**

01 June 2018



Transport Malta

Malta Transport Centre
Marsa, MRS 1917
Malta

Tel: (356) 2122 2203
Fax: (356) 2125 0365
Email: info.tm@transport.gov.mt

www.transport.gov.mt

Round Malta world record attempt

The Ports and Yachting Directorate, Transport Malta notifies mariners that a round Malta world record attempt will be held on Friday 8th June 2018, weather permitting.

Two white buoys will be laid in position A and A1, in the early morning, to indicate the start/finish gate as indicated on attached chart.

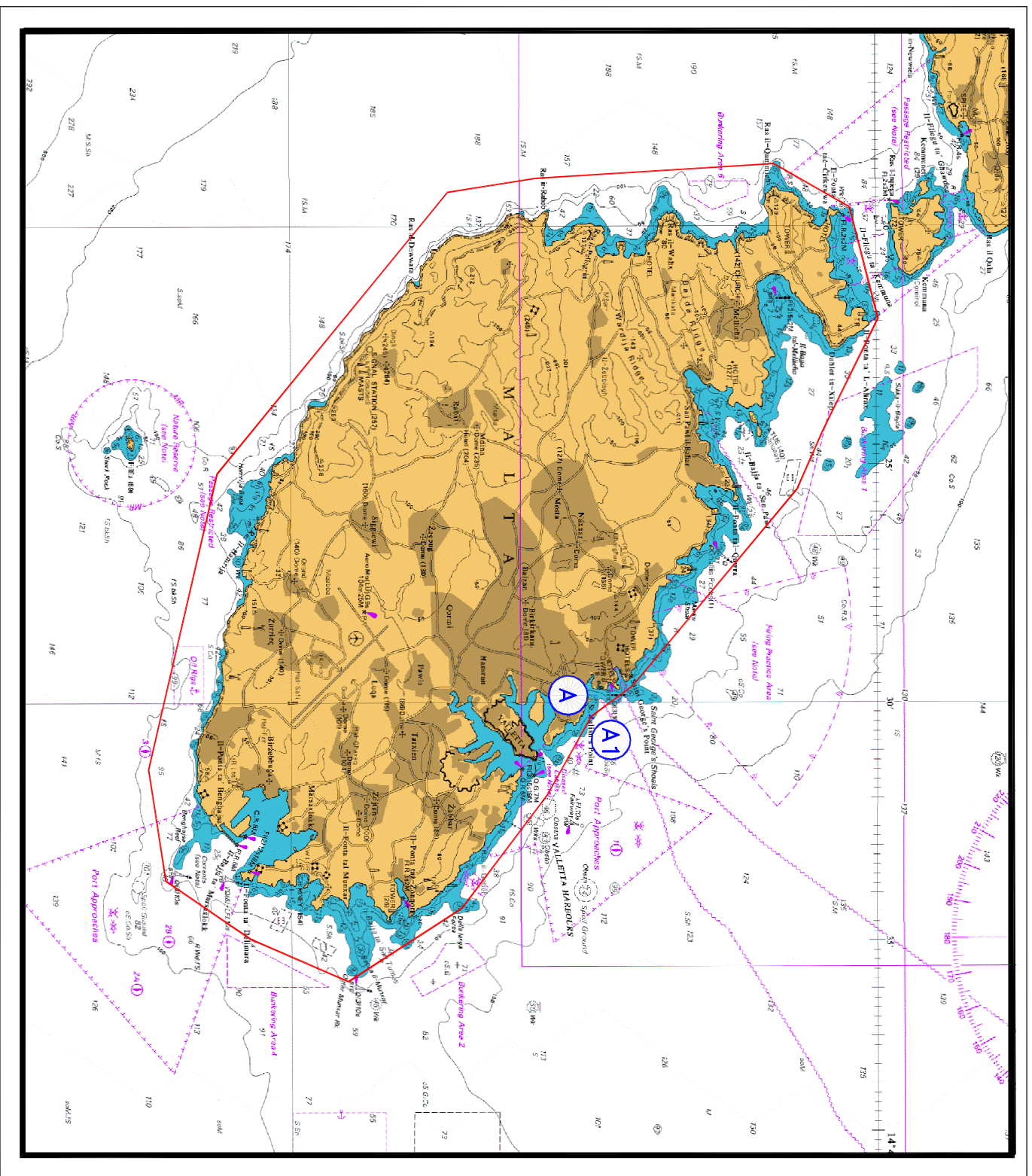
| POSITION | LATITUDE (N) | LONGITUDE (E) | Colour |
|-----------|--------------|---------------|--------|
| A | 35° 55'.168 | 014° 30'.346 | White |
| A1 | 35° 55'.107 | 014° 30'.271 | White |

The course will run in a counter-clockwise direction round Malta.

The attempt will start from the start/finish gate at 0800 hours, arrive at Cirkewwa point at about 0809 hours, Filfla at about 0821 hours, Marsaxlokk East cardinal mark at about 0827 hours and back at the start/finish gate at about 0835 hours.

During the times noted above, mariners in the area are to navigate with extreme caution, at a safe speed and keep off the indicated course as noted on the attached chart. Moreover they are to obey any instructions given by Valletta Port Control (Valletta VTS) on VHF channel 12 and maritime enforcement assets in the area.

Charts Affected: **BA 194, 2537 and 2538**



©British Crown Copyright 1970, 1983, 1986, 1988, 1999, 2000.
All rights reserved

The UK Hydrographic Office makes the accompanying data available to Transport Malta under the terms and conditions of agreement HD 1427/020930/01

DISCLAIMER

Whilst the UK Hydrographic Office has endeavoured to ensure that the material supplied is suitable for the purposes described, it accepts no liability (to the maximum extent permitted by law) for any damage or loss of any nature arising from its use. The material supplied is used entirely at the Recipient's own risk.