



PORTS AND YACHTING DIRECTORATE

LOCAL NOTICE TO MARINERS NO 039 OF 2018

Our Ref: **TM/PYD/83/97**

14 May 2018



Transport Malta

Malta Transport Centre
Marsa, MRS 1917
Malta

Tel: (356) 2122 2203
Fax: (356) 2125 0365
Email: info.tm@transport.gov.mt

www.transport.gov.mt

Voomquest 002 - V2 International Powerboat Championship

The Ports and Yachting Directorate, Transport Malta notifies mariners that the Voomquest 002 – V2 International Powerboat Championship will be held off Sliema between Friday 8th June 2018 and Sunday 10th June 2018, weather permitting.

Navigation will be restricted within the area bounded by the imaginary lines joining the points U, V, W, X, Y, Z and the intermediate coastlines, as shown on attached chart, between 1000 hours and 1630 hours each day.

| POSITION | LATITUDE (N) | LONGITUDE (E) |
|----------|--------------|---------------|
| U | 35° 54'.422 | 014° 30'.909 |
| V | 35° 54'.514 | 014° 31'.246 |
| W | 35° 54'.847 | 014° 31'.412 |
| X | 35° 55'.882 | 014° 30'.568 |
| Y | 35° 55'.781 | 014° 30'.019 |
| Z | 35° 55'.134 | 014° 29'.930 |

A number of buoys will be laid within the area on Thursday 7th June 2018 after 1200 hours, in the following positions A, A1, B, C, D, E, F, F1, G, H, P1 and P2 for the races as indicated on attached chart:

| POSITION | LATITUDE (N) | LONGITUDE (E) | Colour |
|----------|--------------|---------------|--------|
| A | 35° 55'.168 | 014° 30'.346 | White |
| A1 | 35° 55'.107 | 014° 30'.271 | White |
| B | 35° 54'.929 | 014° 30'.563 | Red |
| C | 35° 54'.605 | 014° 30'.844 | Yellow |
| D | 35° 54'.606 | 014° 31'.086 | Yellow |
| E | 35° 54'.765 | 014° 31'.190 | Yellow |
| F | 35° 55'.708 | 014° 30'.482 | Yellow |
| F1 | 35° 55'.763 | 014° 30'.544 | Yellow |
| G | 35° 55'.701 | 014° 30'.145 | Yellow |
| H | 35° 55'.287 | 014° 30'.075 | Yellow |
| P1 | 35° 54'.517 | 014° 30'.848 | Green |
| P2 | 35° 54'.533 | 014° 31'.140 | Green |

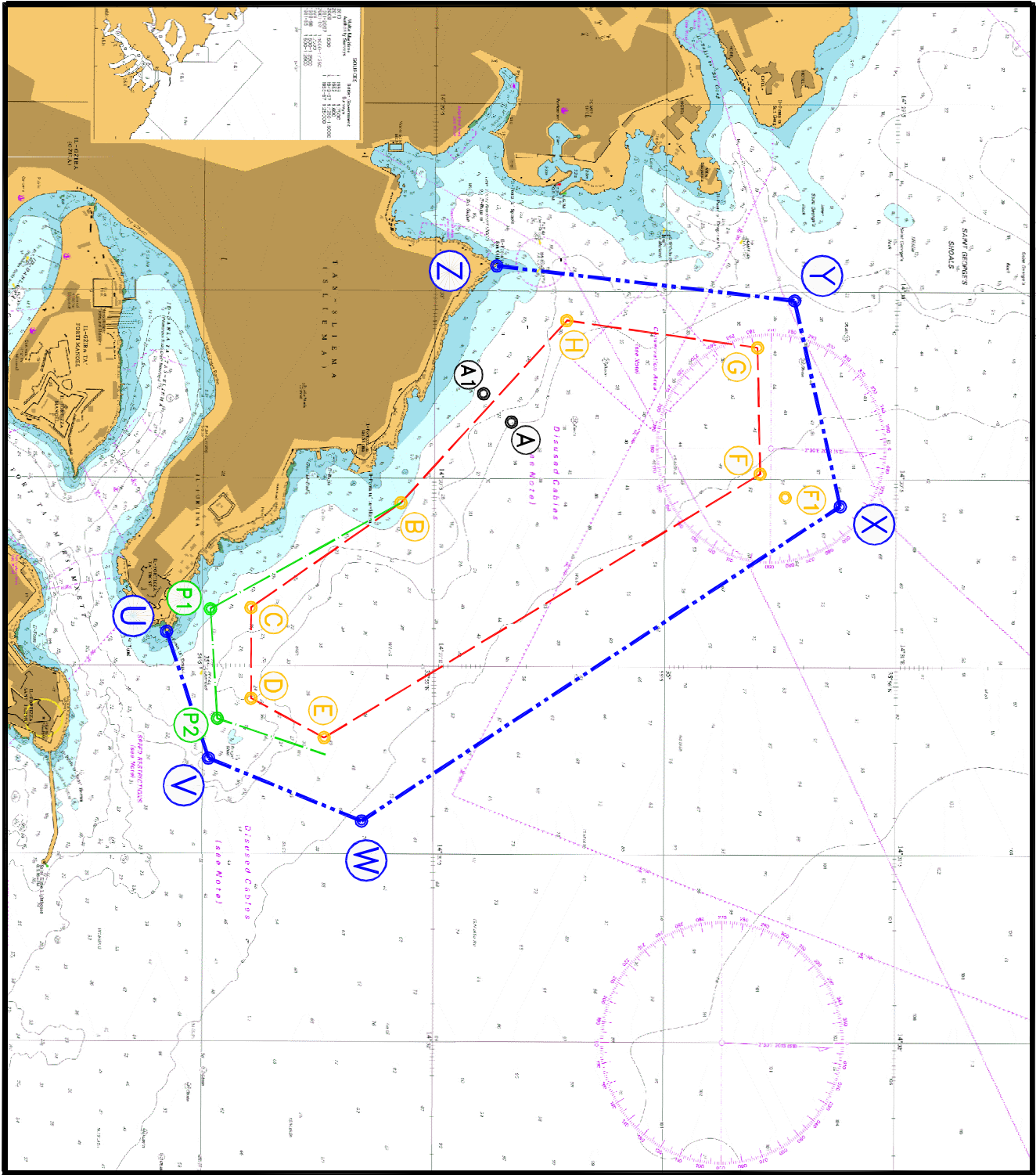


Transport Malta

The buoys will be left in position also during the night and will have a yellow flashing light. During all other hours vessels are to navigate with caution.

Mariners are instructed not to enter the restricted area on the mentioned dates and times stated above. They are to cooperate with the organizers and Maritime Enforcement officers in the area. Moreover they are to obey any instructions given by Valletta Port Control (Valletta VTS) on VHF channel 12.

Charts Affected: **BA 177, 194, 2537 and 2538**



© British Crown Copyright 1970, 1983, 1986, 1988, 1989, 1999, 2000.
 All rights reserved

The UK Hydrographic Office makes the accompanying data available to Transport Malta under the terms and conditions of agreement HD 1427/080930/01

DISCLAIMER

While the UK Hydrographic Office has endeavoured to ensure that the material supplied is suitable for the purposes described, it accepts no liability (to the maximum extent permitted by law) for any damage or loss of any nature arising from its use. The material supplied is used entirely at the Recipient's own risk.