



PORTS AND YACHTING DIRECTORATE

Transport Malta

LOCAL NOTICE TO MARINERS NO 036 of 2018

Our Ref: **TM/PYD 01/18**

Malta Transport Centre
Marsa, MRS 1917
Malta

Tel: (356) 2122 2203
Fax: (356) 2125 0365
Email: info.tm@transport.gov.mt

09 May 2018

www.transport.gov.mt

Removal of vessel MT HEPHAESTUS wreck at Qawra Point

Reference is made to Local Notice to Mariners No. 009 of 2018, regarding "Restricted area at Qawra point - St. Paul's Bay".

The Ports and Yachting Directorate, Transport Malta notifies mariners that the restricted area around the vessel **MT HEPHAESTUS** is being amended.

The amended restricted area is bounded by the imaginary lines between the points A, B, C, D and the intermediate coastline, as shown on attached chart

Yellow marker buoys will be placed along the imaginary lines A to B and B to C. The buoys at points B and C will carry a yellow flashing light.

Point	Latitude (N)	Longitude (E)
A	35° 57'.593	014° 25'.468 (coast)
B	35° 57'.635	014° 25'.468 (buoy)
C	35° 57'.635	014° 25'.615 (buoy)
D	35° 57'.609	014° 25'.615 (coast)

Arrangements for the removal of the vessel are currently being made.

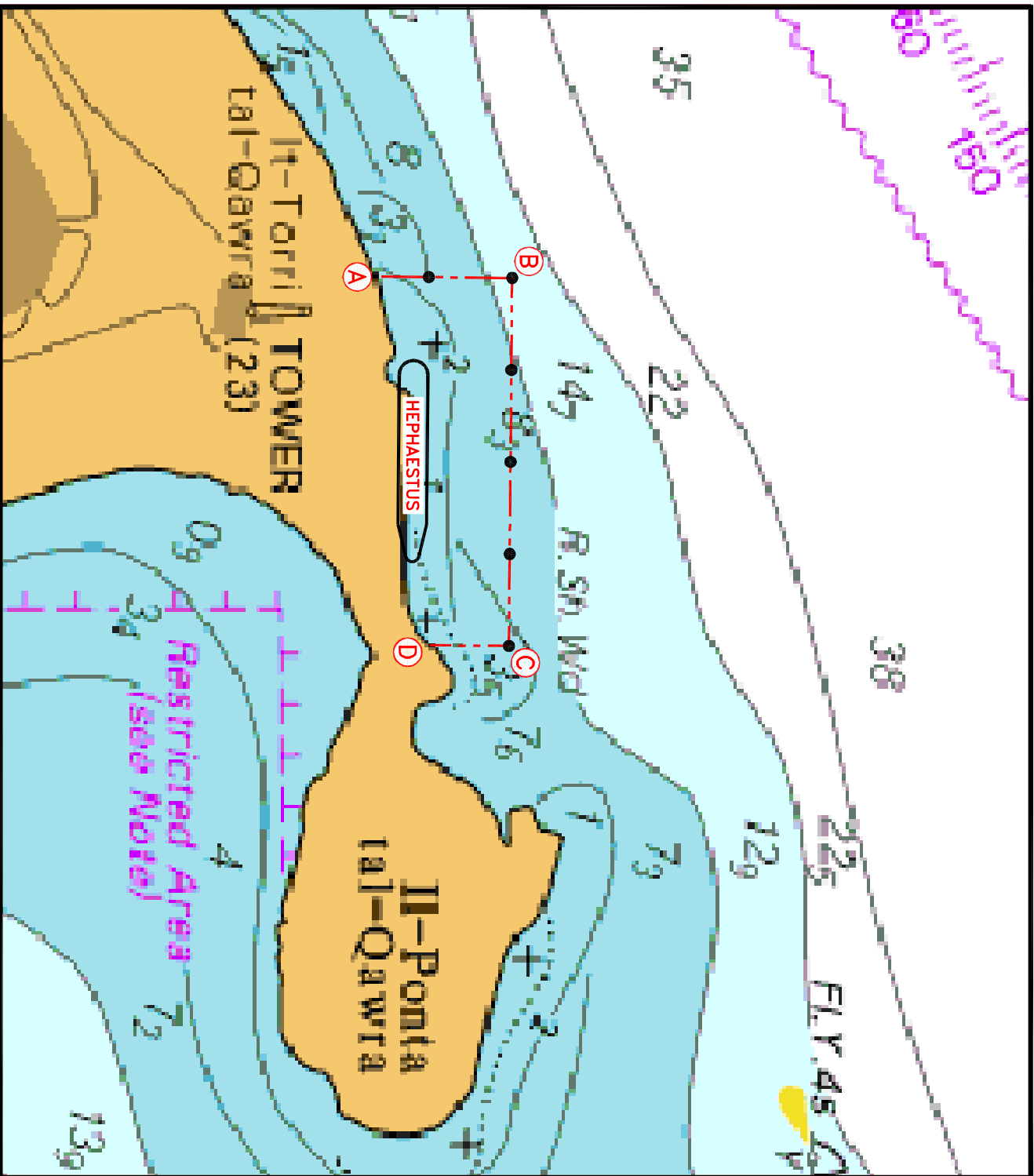
With immediate effect only authorised vessels will be allowed in this area.

Local Notice to Mariners No. 009 of 2018 is hereby being **Cancelled**

Masters of vessels are to note the above and give the enclosed area a wide berth when navigating in the vicinity and proceed at slow speed.

.

Chart Affected: BA 211B, 2538



©British Crown Copyright 1970, 1983, 1986, 1988, 1999, 2000.
All rights reserved

The UK Hydrographic Office makes the accompanying data available to Transport Malta under the terms and conditions of agreement HD 1427/080930/01.

DISCLAIMER

While the UK Hydrographic Office has endeavoured to ensure that the material supplied is suitable for the purposes described, it accepts no liability for the maximum extent permitted by law for any damage or loss of any nature arising from its use. The material supplied is used entirely at the Recipient's own risk.