



PORTS AND YACHTING DIRECTORATE

Transport Malta

LOCAL NOTICE TO MARINERS NO 018 OF 2018

Our Ref: **TM/PYD/83/97**

Malta Transport Centre
Marsa, MRS 1917
Malta

Tel: (356) 2122 2203
Fax: (356) 2125 0365
Email: info.tm@transport.gov.mt

21 March 2018

www.transport.gov.mt

Further to Local Notice to Mariners No. 017 of 2018 Re - V2 Powerboat Races in South Comino channel

The Ports and Yachting Directorate, Transport Malta notifies mariners that further to Local Notice to Mariners No. 017 of 2018 Re - V2 Powerboat Races in South Comino channel, in case of adverse weather conditions, the races between Friday 23rd March 2018 and Sunday 25th March 2018 will be relocated in Mellieha Bay.

Navigation will be restricted within the area bounded by the lines S1 to S8, as shown on attached chart, between 0800 hours and 1700 hours each day.

| POSITION | LATITUDE (N) | LONGITUDE (E) |
|-----------|--------------|---------------|
| S1 | 35° 58'.420 | 014° 21'.102 |
| S2 | 35° 58'.080 | 014° 21'.347 |
| S3 | 35° 58'.300 | 014° 22'.268 |
| S4 | 35° 58'.440 | 014° 22'.789 |
| S5 | 35° 58'.526 | 014° 23'.487 |
| S6 | 35° 59'.205 | 014° 23'.057 |
| S7 | 35° 59'.128 | 014° 22'.565 |
| S8 | 35° 58'.769 | 014° 22'.198 |

A number of buoys will be laid within the area in the following positions A, B, C, D, E, F, G, G1 and H for the races as indicated on attached chart:

| POSITION | LATITUDE (N) | LONGITUDE (E) | Colour |
|-----------------|--------------|---------------|--------|
| A-Finish | 35° 58'.450 | 014° 21'.650 | White |
| B | 35° 58'.380 | 014° 21'.380 | Red |
| C | 35° 58'.230 | 014° 21'.330 | Red |
| D | 35° 58'.200 | 014° 21'.480 | Red |
| E | 35° 58'.420 | 014° 22'.670 | Green |
| F | 35° 58'.600 | 014° 23'.180 | Red |



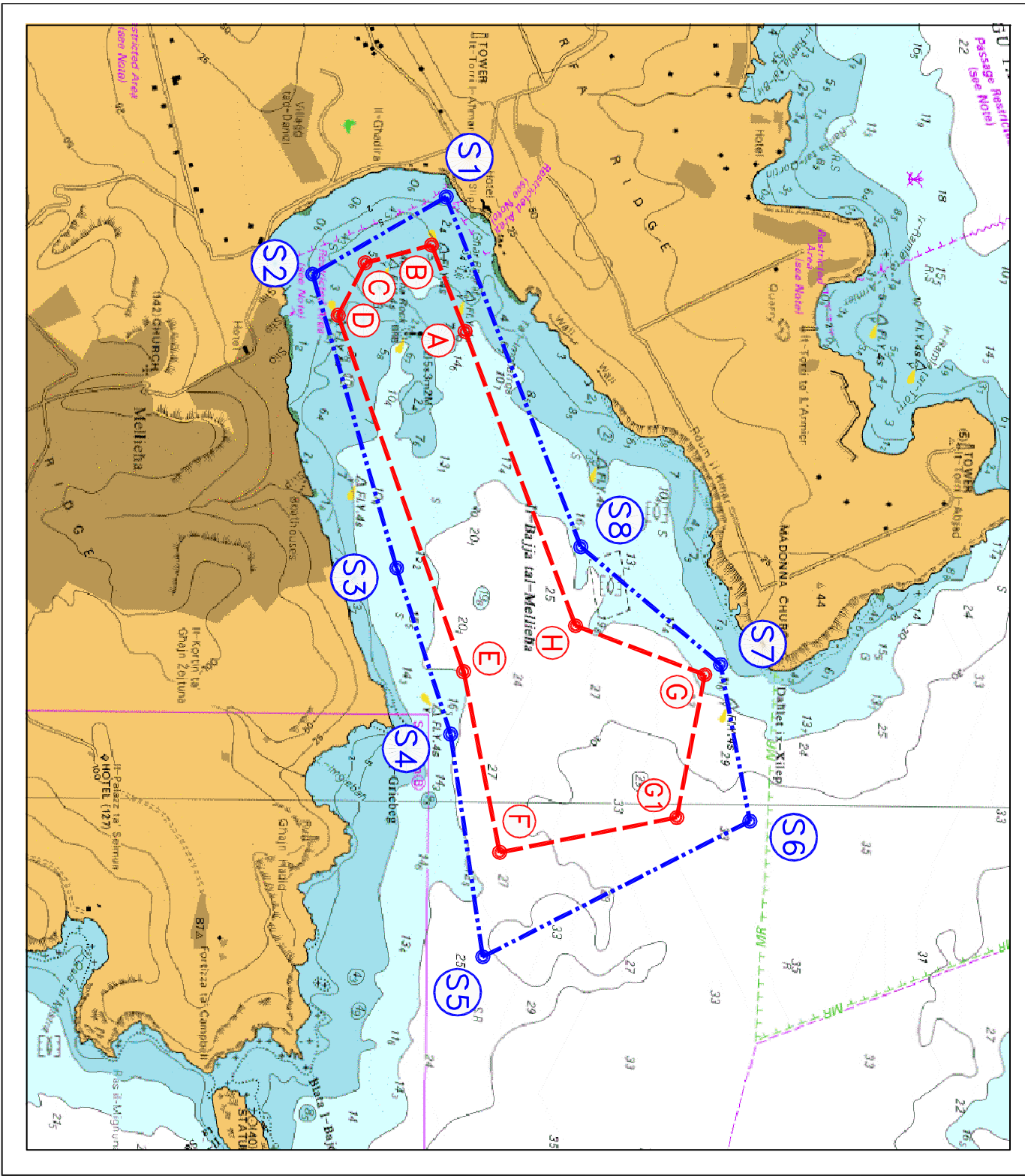
Transport Malta

| | | | |
|-----------|-------------|--------------|-------|
| G1 | 35° 59'.000 | 014° 23'.200 | Red |
| G | 35° 59'.100 | 014° 22'.680 | Red |
| H | 35° 58'.800 | 014° 22'.500 | Green |

The buoys will be left in position during the night and will have a yellow flashing light.

Mariners are instructed not to enter the restricted area on the mentioned dates and times stated above. They are to cooperate with the organizers and Maritime Enforcement officers in the area. Moreover they are to obey any instructions given by Valletta Port Control (Valletta VTS) on VHF channel 12.

Charts Affected: **BA 194, 211A, 2537 and 2538**



© British Crown Copyright 1970, 1983, 1986, 1988, 1999, 2000.
 All rights reserved.
 The UK Hydrographic Office makes the accompanying data available to Transport Malta under the terms and conditions of agreement HD 1427/080930/01.
DISCLAIMER
 While the UK Hydrographic Office has endeavoured to ensure that the material should be suitable for the purposes for which it is accepted, it accepts no liability for the maximum extent permitted by law for any damage or loss of any nature arising from its use. The material supplied is used entirely at the Recipient's own risk.