



PORTS AND YACHTING DIRECTORATE

Transport Malta

## LOCAL NOTICE TO MARINERS No 049 of 2019

Our Ref: TM/PYD/63/95

Malta Transport Centre  
Marsa, MRS 1917  
Malta

Tel: (356) 2122 2203  
Fax: (356) 2125 0365  
Email: [info.tm@transport.gov.mt](mailto:info.tm@transport.gov.mt)

23 May 2019

[www.transport.gov.mt](http://www.transport.gov.mt)

### Diving Survey in Lazzaretto and Sliema Creek, Marsamxett Harbour

The Ports and Yachting Directorate, Transport Malta notifies mariners that a diving survey will be carried out in the area enclosed by the imaginary lines between A – B, C – D and intermediate coast (shown hatched on attached chart), in Marsamxett Harbour, between Friday 24<sup>th</sup> May 2019 and Thursday 30<sup>th</sup> May 2019, weather permitting.

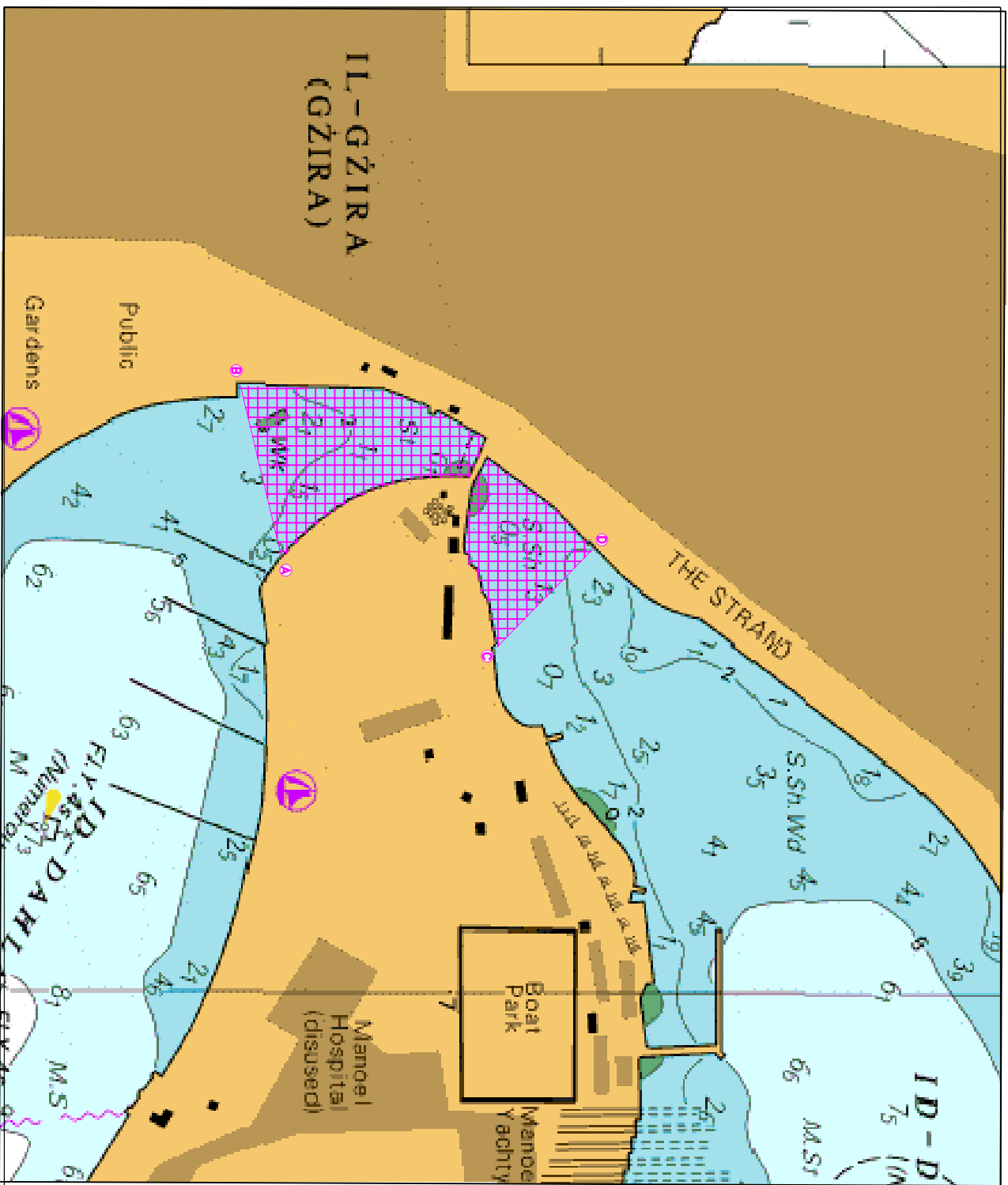
Position	Latitude (N)	Longitude (E)
A	35° 54'.195	014° 29'.812
B	35° 54'.182	014° 29'.747
C	35° 54'.273	014° 29'.847
D	35° 54'.303	014° 29'.809

The survey will be carried out by scuba divers display the international code of Signals flag "A".

Masters and operators of vessels are advised to keep a sharp lookout, navigate with caution and slow speed when navigating in the above indicated area. They are to give the above support vessel a wide berth of at least 100m. They are to comply with instructions given by Valletta Port Control (Valletta VTS) on VHF Channel 12.

Chart affected: BA 177

Positions referred to WGS 84 DATUM.



© British Crown Copyright 1970, 1983, 1986, 1988, 1999, 2000  
All rights reserved.

The UK Hydrographic Office makes the accompanying data  
Available to Malta Maritime Authority (Transport Malta)  
Under the terms and conditions of agreement HO 1427/020930/01.

**DISCLAIMER**

Whilst the UK Hydrographic Office has endeavoured to ensure  
That the material supplied is suitable for the purpose described,  
It accepts no liability (to the maximum extent permitted by law)  
For any damage or loss of any nature arising from its use.  
The material supplied is used entirely at the Recipient's own risk.