



PORTS AND YACHTING DIRECTORATE

LOCAL NOTICE TO MARINERS No 031 of 2019

Our Ref: **TM/PYD/22/01/ Vol VI**

10 April 2019



Transport Malta

Malta Transport Centre
Marsa, MRS 1917
Malta

Tel: (356) 2122 2203
Fax: (356) 2125 0365
Email: info.tm@transport.gov.mt

www.transport.gov.mt

**Malta International Fireworks Festival 2019
Fireworks Display in Grand Harbour**

The Ports and Yachting Directorate, Transport Malta, notifies mariners that a fireworks display will be held in Grand Harbour on Tuesday 30th April 2019.

Fireworks will be let off from a row of pontoons and a barge placed off St. Angelo Point.

A copy of part of BA Chart 177 showing arrangement of pontoons and the barges is attached.

On Sunday 28th April 2019 at 0730 hours, a barge will berth alongside the quay at Id-Dahla ta' Rinella in Kalkara. It will remain berthed there until Tuesday 30th April 2019 at 1000 hours.

Vessel owners moored in Rinella Bay are to remove their vessels from Saturday 27th April 2019 evening to Wednesday 1st May 2019. Transport Malta will accept no liabilities whatsoever for any damage caused to vessels that are left within Rinella Bay on the mentioned dates and times.

The pontoon sinkers will be laid in position on Tuesday 30th April 2019 at 0900 hours at points X, Y and Z while the pontoons will be placed along the lines X-Y and Y-Z, on Tuesday 30th April 2019 from 1400 hours onwards, and will be removed immediately after the displays finish.

The barge and sinkers off St. Angelo Point in position W will be towed loaded with fireworks and placed in position on Tuesday 30th April 2019 after 1630 hours.

Another barge, which will be lit up, is to be used as a stage and will be placed in position V, off Barriera Wharf, on Tuesday 30th April 2019 at 1700 hours and will be removed by Wednesday 1st May 2019 before 0800 hours.



Transport Malta

Barriera Wharf and Lascaris Wharf are to be clear of all vessels from Monday 29th April 2019 at 0800 hours to Wednesday 1st May 2019 at 0800 hours.

The fireworks will be let off on Tuesday 30th April 2019, between 1900 hours and 2245 hours local Time (1700 hours and 2045 hours UTC)

In view of the above, mariners are informed that part of Grand Harbour, between the imaginary lines A - B, C - D, E - F, G - H and the intermediate coastline (as shown on attached chart), will be closed to all vessels.

The port closure and prohibited area will be effective as of Tuesday 30th April 2019 from 1600 hours to 2300 hours local Time (1400 hours to 2100 hours UTC).

Position	Latitude (N)	Longitude (E)
A	35° 53'.590	014° 30'.699
B	35° 53'.458	014° 30'.831
C	35° 53'.417	014° 30'.937
D	35° 53'.512	014° 31'.031
E	35° 53'.541	014° 31'.155
F	35° 53'.545	014° 31'.359
G	35° 53'.720	014° 31'.541
H	35° 53'.840	014° 31'.112
V	35° 53'.766	014° 30'.957
W	35° 53'.666	014° 30'.957
X	35° 53'.736	014° 31'.008
Y	35° 53'.715	014° 30'.914
Z	35° 53'.647	014° 30'.867

During the event shipping movements in Grand Harbour will be restricted. No vessel will be allowed within the restricted area, except by arrangement through the organising Committee / Valletta Port Control (Valletta VTS)

All vessels and bathers are warned to keep well clear and maintain a safe distance of not less than 200 metres from the barge while it is being towed.

Authorised crafts are to give the display pontoons and barges a wide berth of at least 200m. No movements whatsoever will be allowed during the actual displays.

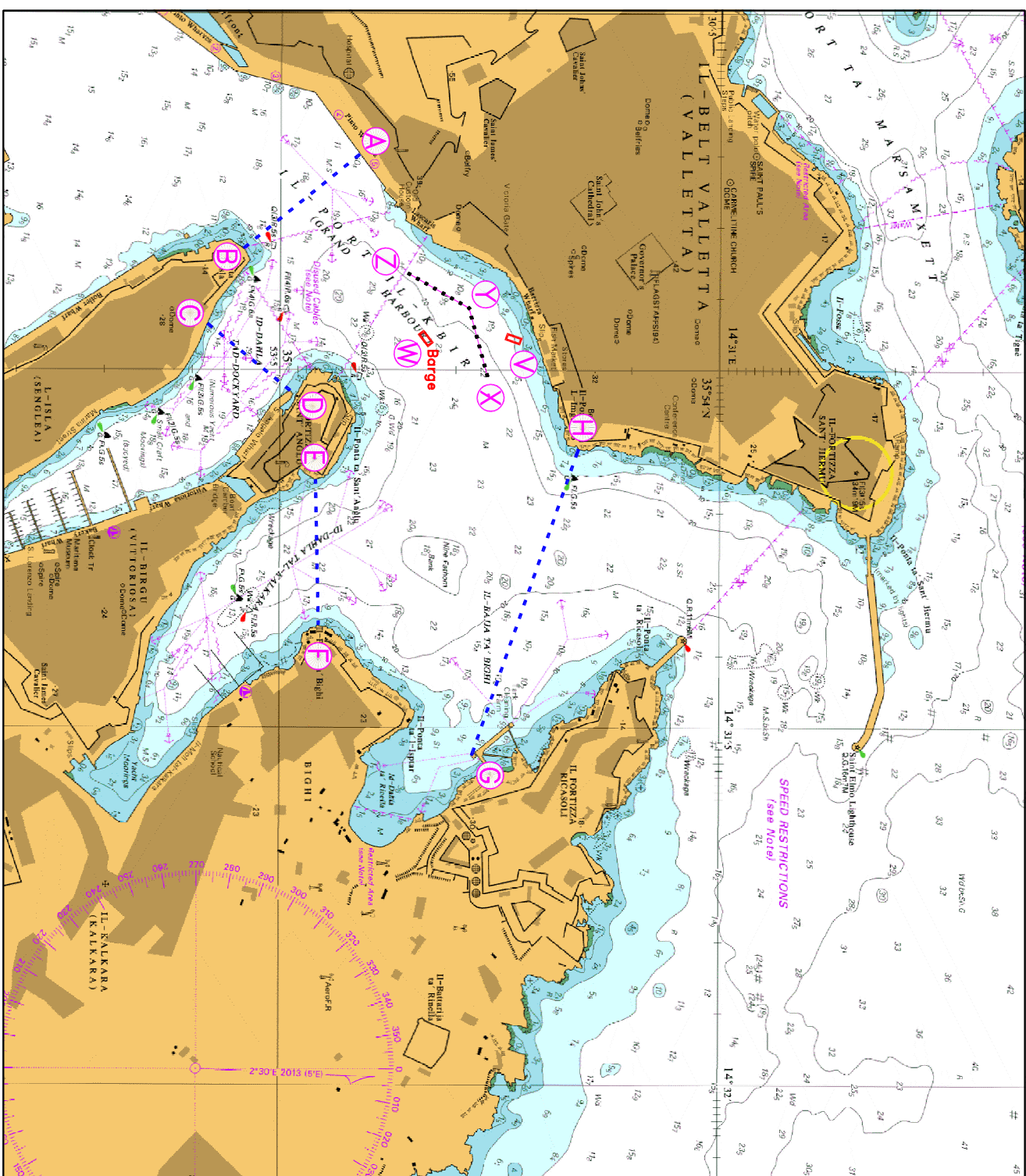


Transport Malta

Mariners are to comply with instructions and directions issued by Valletta Port Control (Valletta VTS) on VHF Channel 12 and Maritime Enforcement Officers that will be in the area.

Positions are in WGS 84 DATUM

Chart Affected: **BA 177**



©British Crown Copyright 1970, 1983, 1986, 1988, 1999, 2000.
All rights reserved

The UK Hydrographic Office makes the accompanying data available to Transport Malta under the terms and conditions of agreement HD 1427/020930/01.

DISCLAIMER

Whilst the UK Hydrographic Office has endeavoured to ensure that the material supplied is suitable for the purpose described, it accepts no liability (to the maximum extent permitted by law) for any damage or loss of any nature arising from its use. The material supplied is used entirely at the Recipient's own risk.