



PORTS AND YACHTING DIRECTORATE

Transport Malta

LOCAL NOTICE TO MARINERS No 024 OF 2019

Our Ref: MT/PYD/0001/19

Malta Transport Centre
Marsa, MRS 1917
Malta

Tel: (356) 2122 2203
Fax: (356) 2125 0365
Email: info.tm@transport.gov.mt

www.transport.gov.mt

22 March 2019

SatCan rocket launch event

The Ports and Yachting Directorate, Transport Malta notifies Mariners that a SatCan rocket launch event will be carried out from Pembroke ranges on Wednesday 27th March 2019 between 0930 hours and 1230 hours.

Due to the above mariners are informed that they are to keep out of the area A, B, C, D and the intermediate coastline (as shown on attached chart) during the above mentioned date and time.

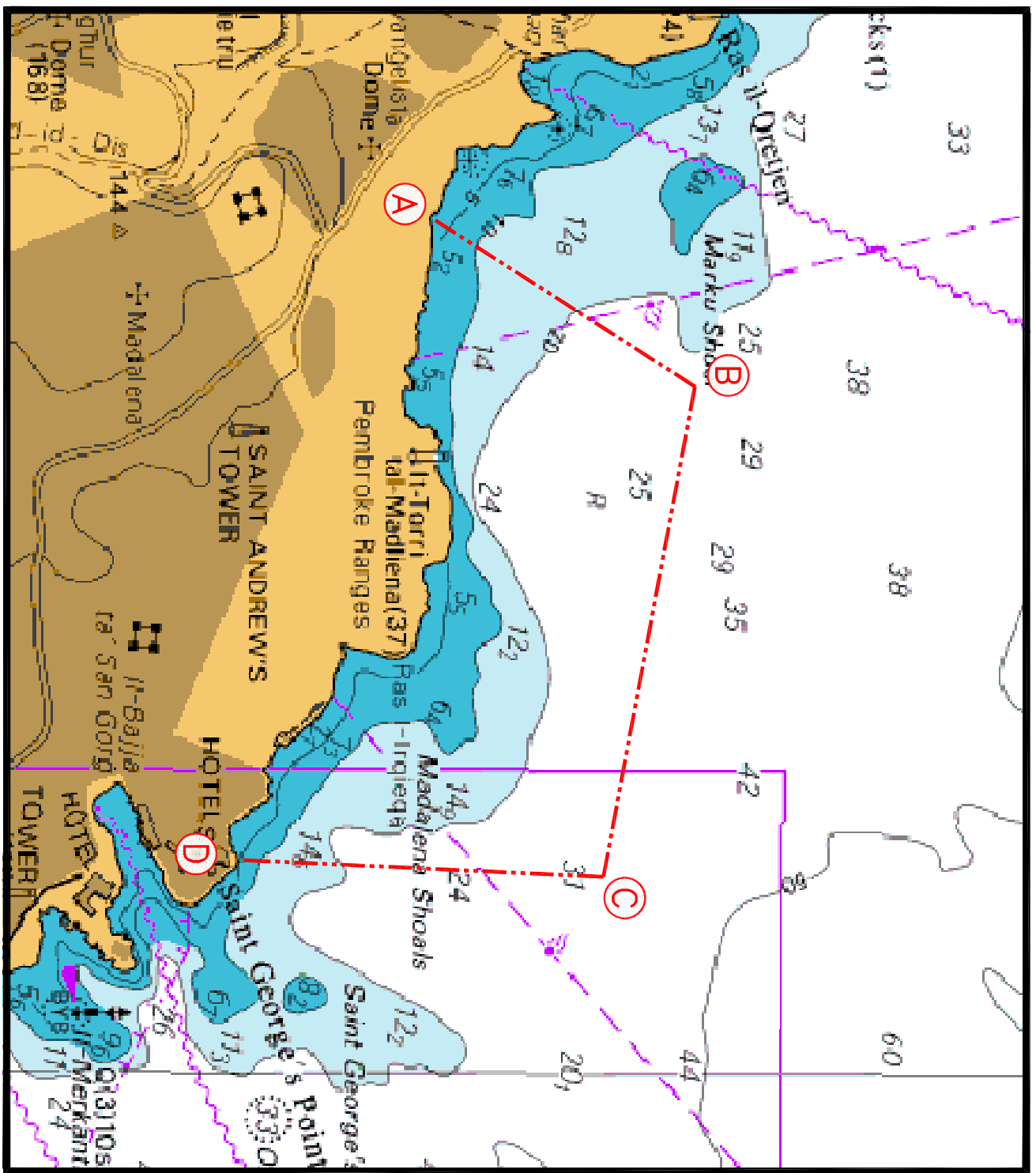
| | LATITUDE (N) | LONGITUDE (E) |
|---|--------------|---------------|
| A | 35° 56'.244 | 014° 27'.755 |
| B | 35° 56'.804 | 014° 28'.191 |
| C | 35° 56'.613 | 014° 29'.486 |
| D | 35° 55'.841 | 014° 29'.447 |

If due to poor weather conditions, the event cannot be held on Wednesday 27th March 2019, the event will be held on Friday 29th March 2019.

Mariners are to note the above and keep away from the area. Any instructions issued by Valletta Port Control (Valletta VTS) on VHF channel 12, are to be complied with.

Positions referred to WGS 84 DATUM.

Chart Affected: **BA Chart 2537, 2538**



© British Crown Copyright 1970, 1983, 1986, 1988, 1999, 2000
 All rights reserved.

The UK Hydrographic Office makes the accompanying data available to Malta Maritime Authority (Transport Malta) under the terms and conditions of agreement HO 1427/020930/01.

DISCLAIMER

Whilst the UK Hydrographic Office has endeavoured to ensure that the material supplied is suitable for the purpose described, it accepts no liability (to the maximum extent permitted by law) for any damage or loss of any nature arising from its use. The material supplied is used entirely at the Recipient's own risk.