



PORTS AND YACHTING DIRECTORATE

Transport Malta

## LOCAL NOTICE TO MARINERS No 008 OF 2019

Our Ref: MT/PYD/22/01 IV

Malta Transport Centre  
Marsa, MRS 1917  
Malta

Tel: (356) 2122 2203  
Fax: (356) 2125 0365  
Email: [info.tm@transport.gov.mt](mailto:info.tm@transport.gov.mt)

[www.transport.gov.mt](http://www.transport.gov.mt)

30 January 2019

### Fireworks - Feast of St Paul - Valletta - 2019

The Ports and Yachting Directorate, Transport Malta notifies Mariners that in connection with the Titular Feast of St Paul's Shipwreck, fireworks display will be let off from the foreshore at "il-Ponta ta' Sant' Jiermu" - Valletta from approximately the following position:

	LATITUDE (N)	LONGITUDE (E)
A	35° 54'.163	14° 31'.226

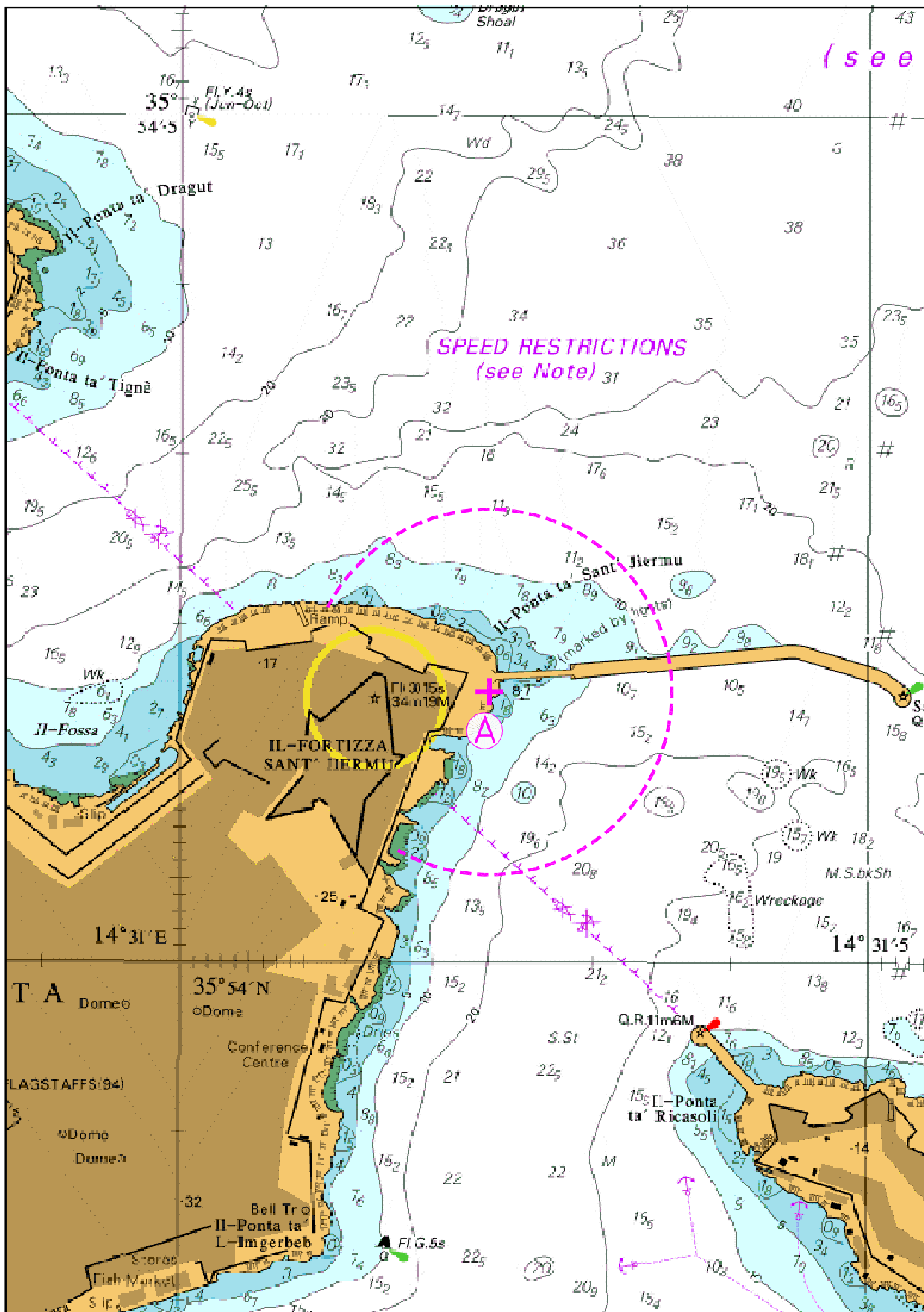
The dates and times of the fireworks from the above position are as follows:

Saturday 9 <sup>th</sup> February 2019	from 2200 hours to 2300 hours
Sunday 10 <sup>th</sup> February 2019	from 0800 hours to 0815 hours, from 1145 hours to 1210 hours and from 1830 hours to 2100 hours.

Mariners are to note the above, give the position indicated a wide berth and a safe distance of at least **200m** (as shown on attached chart). They are further instructed to contact Valletta Port Control (Valletta VTS) on VHF channel 12 when navigating in or out of the Grand Harbour and Marsamxett Harbour on the above dates and times. Any instructions issued by Valletta Port Control (Valletta VTS) are to be complied with.

Positions referred to WGS 84 DATUM.

Chart Affected: BA Chart 177



© British Crown Copyright 1970, 1983, 1986, 1988, 1999, 2000  
 All rights reserved.

The UK Hydrographic Office makes the accompanying data  
 Available to Malta Maritime Authority (Transport Malta)  
 Under the terms and conditions of agreement HO 1427/020930/01.

DISCLAIMER

Whilst the UK Hydrographic Office has endeavoured to ensure  
 That the material supplied is suitable for the purpose described,  
 It accepts no liability (to the maximum extent permitted by law)  
 For any damage or loss of any nature arising from its use.  
 The material supplied is used entirely at the Recipient's own risk.