



PORTS AND YACHTING DIRECTORATE

Transport Malta

LOCAL NOTICE TO MARINERS No 006 OF 2019

Our Ref: **TM/PYD/63/95 Vol VI**

Malta Transport Centre
Marsa, MRS 1917
Malta

Tel: (356) 2122 2203
Fax: (356) 2125 0365
Email: info.tm@transport.gov.mt

www.transport.gov.mt

23 January 2019

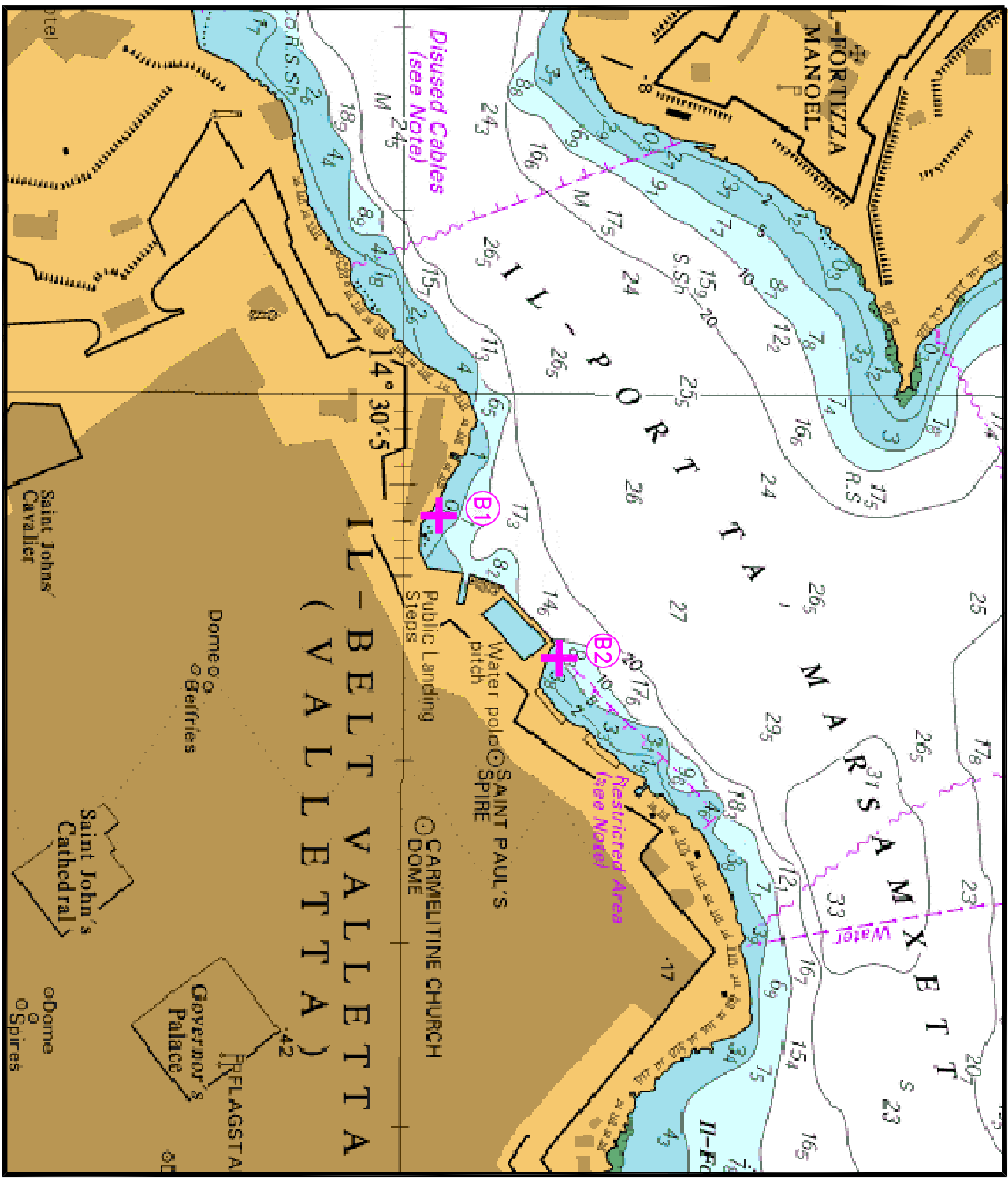
**Further to Local Notice to Mariners Nos. 129 of 2018 and 004 of 2019
Regarding Sediment sampling from seabed at different localities**

The Ports and Yachting Directorate, Transport Malta, notifies mariners and the general public that further to Local Notice to Mariners Nos. 129 of 2018 and 004 of 2019 regarding sediment sampling from seabed at different localities, sampling will also be carried out from the following two points shown on attached:

POINT	LATITUDE (N)	LONGITUDE (E)
B1	35° 54'.016	14° 30'.567
B2	35° 54'.069	14° 30'.644

All other information included in Local Notice to Mariners Nos. 129 of 2018 and 004 of 2019 will remain valid.

Chart Affected: **BA 177**



© British Crown Copyright 1970, 1983, 1986, 1988, 1999, 2000
All rights reserved.

The UK Hydrographic Office makes the accompanying data available to Malta Maritime Authority (Transport Malta) under the terms and conditions of agreement HO 1427/020930/01.

DISCLAIMER

While the UK Hydrographic Office has endeavoured to ensure that the material supplied is suitable for the purpose described, it accepts no liability (to the maximum extent permitted by law) for any damage or loss of any nature arising from its use. The material supplied is used entirely at the Recipient's own risk.