



PORTS AND YACHTING DIRECTORATE

Transport Malta

LOCAL NOTICE TO MARINERS NO 003 of 2019

Our Ref: **TM/PYD/63/95 Vol VI**

Malta Transport Centre
Marsa, MRS 1917
Malta

Tel: (356) 2122 2203
Fax: (356) 2125 0365
Email: info.tm@transport.gov.mt

04 January 2019

www.transport.gov.mt

Marine Ecological Surveys in Marsamxett Harbour

The Ports and Yachting Directorate, Transport Malta notifies mariners that, weather permitting, a Marine Ecological Surveys will be carried out in Marsamxett Harbour (Sliema Ferries), starting with immediate effect and is expected to be concluded by end of January 2019.

The survey, which will include the use of divers, will be held within the safety zone shown hatched in red on attached chart.

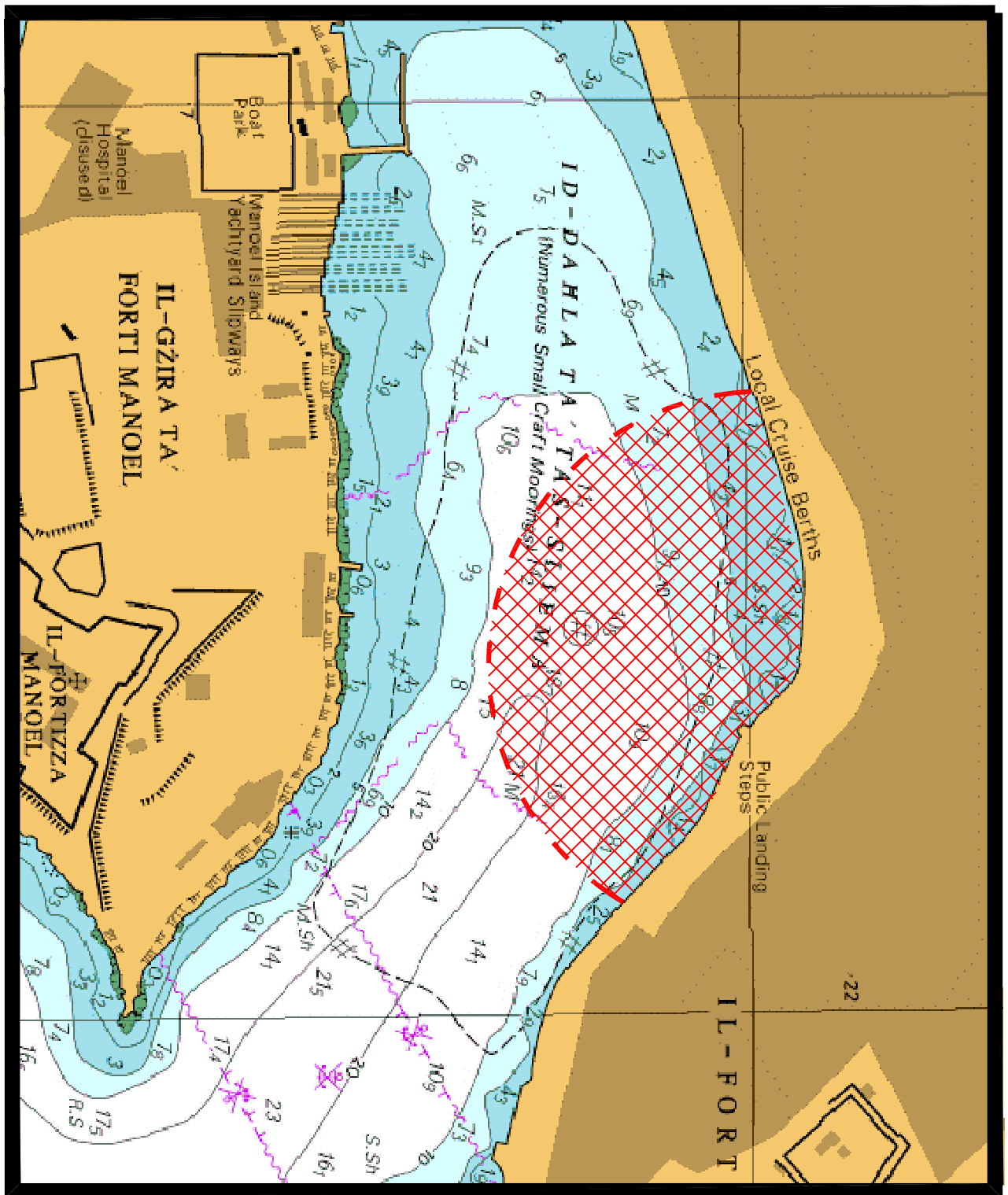
M.V. Atlantis II will be assisting in the survey operations and will display Alpha Flag in according with International Code of Signals, when divers are in the water.

Mariners and operators of vessels are advised not to navigate in the safety zone. Any movements in the proximity of the safety zone are to be coordinated with the survey team onboard the M.V. Atlantis II and with Valletta Port Control (Valletta VTS) on VHF Channel 12.

Masters and operators of vessels are advised to keep a sharp lookout, navigate with caution, minimum speed and give the survey vessel a wide berth.

Instructions given by Valletta Port Control (Valletta VTS) on VHF Channel 12 are to be complied with.

Chart affected: **BA 177**



© British Crown Copyright 1970, 1983, 1986, 1988, 1999, 2000
All rights reserved.

The UK Hydrographic Office makes the accompanying data
Available to Malta Maritime Authority (Transport Malta)
Under the terms and conditions of agreement HO 1427/020930/01.

DISCLAIMER

While the UK Hydrographic Office has endeavoured to ensure
That the material supplied is suitable for the purpose described,
It accepts no liability (to the maximum extent permitted by law)
For any damage or loss of any nature arising from its use.
The material supplied is used entirely at the Recipient's own risk.