



PORTS AND YACHTING DIRECTORATE

Transport Malta

NOTICE TO MARINERS No 16 OF 2017

Our Ref: MT/PYD/0056/10

Malta Transport Centre
Marsa, MRS 1917
Malta

Tel: (356) 2122 2203
Fax: (356) 2125 0365
Email: info.tm@transport.gov.mt

17 March 2017

www.transport.gov.mt

Proposed new Marina at Sa Maison - Marsamxett Harbour

The Ports and Yachting Directorate, Transport Malta notifies Mariners that a new marina is being established at Sa Maison in Marsamxett Harbour, within the area **A, B, C, D, E, F** and **G** shown hatched in red on attached chart.

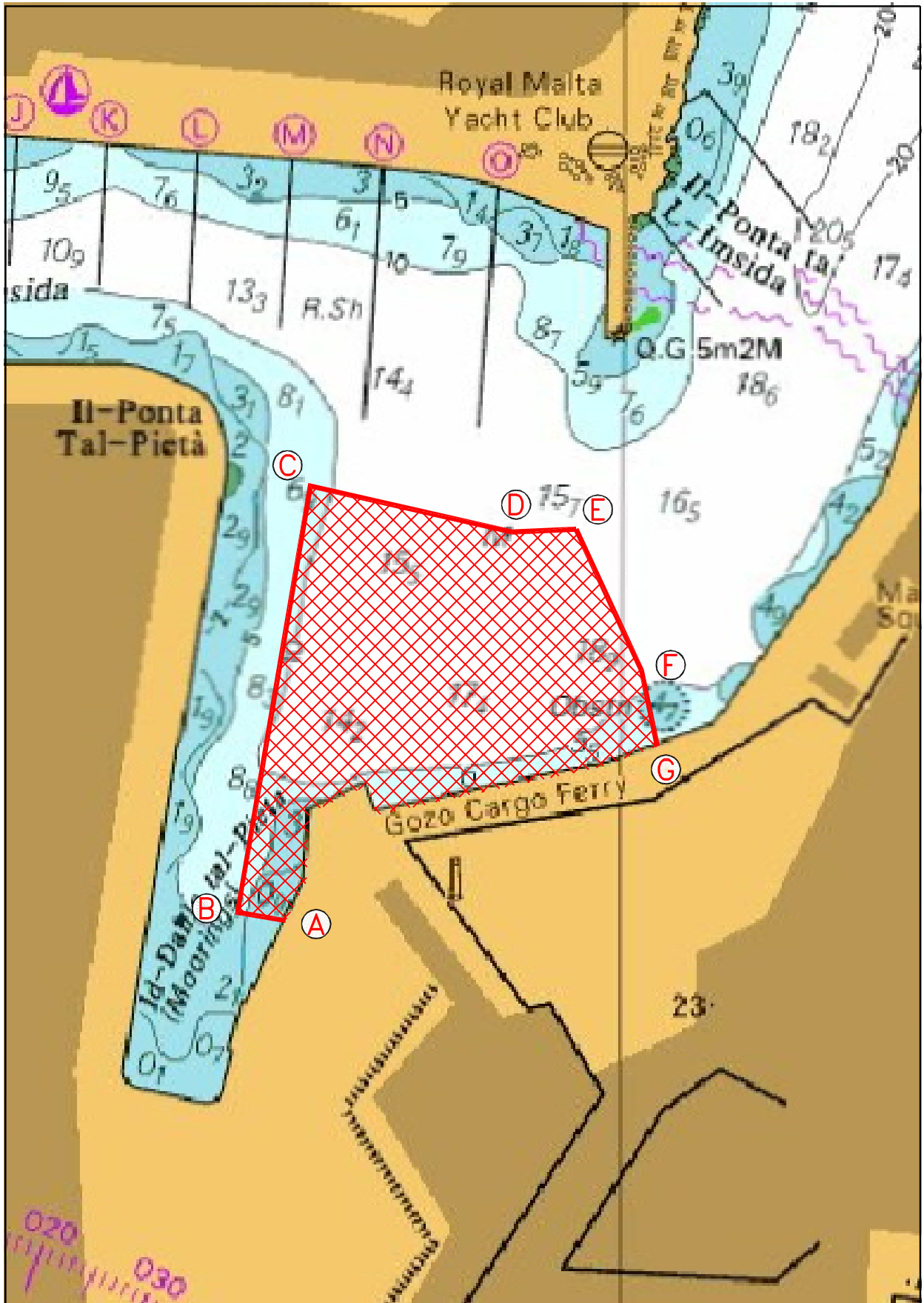
Points	Latitude (N)	Longitude (E)	
A	35° 53'.628	014° 29'.877	Coast
B	35° 53'.630	014° 29'.854	
C	35° 53'.757	014° 29'.886	
D	35° 53'.744	014° 29'.960	
E	35° 53'.745	014° 29'.983	
F	35° 53'.703	014° 30'.008	
G	35° 53'.680	014° 30'.013	Coast

The work is expected to start with immediate effect and will consist of the laying of sinkers, chains and pontoons with the use of barges/support vessels and divers. The support vessel will display the International Code of Signal Flag 'A' during diving operation.

Mariners are to note the above, give the area indicated a wide berth and proceed at slow speed. They are further instructed to coordinate with the contractor on site. Any instructions issued by Valletta Port Control (Valletta VTS) on VHF channel 12 are to be complied with.

A further notice to mariners will be issued with additional information including details of lights and marine aids to navigation.

Chart Affected: BA Chart 177



©British Crown Copyright 1970, 1983, 1986, 1988, 1999, 2000.
All rights reserved

The UK Hydrographic Office makes the accompanying data available to Transport Malta under the terms and conditions of agreement HD 1427/020930/01.

DISCLAIMER

Whilst the UK Hydrographic Office has endeavoured to ensure that the material supplied is suitable for the purpose described, it accepts no liability (to the maximum extent permitted by law) for any damage or loss of any nature arising from its use. The material supplied is used entirely at the Recipient's own risk.