



PORTS AND YACHTING DIRECTORATE

Transport Malta

## NOTICE TO MARINERS NO 12 of 2017

Our Ref: **TM/PYD/ 299/81**  
**TM/PYD/ 155/89**

Malta Transport Centre  
Marsa, MRS 1917  
Malta

Tel: (356) 2122 2203  
Fax: (356) 2125 0365  
Email: [info.tm@transport.gov.mt](mailto:info.tm@transport.gov.mt)

[www.transport.gov.mt](http://www.transport.gov.mt)

06 March 2017

### Chart Correction

#### Reference is made to BA Chart 2538 – Malta

Mariners are informed that the **Waiting Area Anchorage** (Valletta and Marsaxlokk, shown dashed in green on attached chart) bounded by the following positions:

Position	Latitude (N)	Longitude (E)
A	35° 51'.600	014° 38'.600
B	35° 51'.600	014° 42'.000
C	35° 50'.000	014° 42'.000
D	35° 50'.000	014° 38'.600

is being relocated Eastward from the present position to that shown hatched in red on attached chart, and is bounded by the following positions:

Position	Latitude (N)	Longitude (E)
E	35° 51'.600	014° 41'.930
F	35° 51'.600	014° 45'.330
G	35° 50'.000	014° 45'.330
H	35° 50'.000	014° 41'.930

The new area will come into force by Wednesday 15<sup>th</sup> March 2017, and will be coordinated by Valletta Port Control (Valletta VTS) and Marsaxlokk Port Control (Marsaxlokk VTS).

Mariners instructed to proceed to the Waiting Area Anchorage (Valletta and Marsaxlokk) are to comply with instructions provided by Valletta Port Control (Valletta VTS) and Marsaxlokk Port Control (Marsaxlokk VTS) on VHF channels 12, 14 and 16 as appropriate.



Transport Malta

Malta Transport Centre  
Marsa, MRS 1917  
Malta

Tel: (356) 2122 2203  
Fax: (356) 2125 0365  
Email: [info.tm@transport.gov.mt](mailto:info.tm@transport.gov.mt)

[www.transport.gov.mt](http://www.transport.gov.mt)

Furthermore, the **Offshore Aquaculture Zone** (shown dashed in blue on attached chart) bounded by the following positions:

Position	Latitude (N)	Longitude (E)
S	35° 53'.580	014° 38'.580
T	35° 53'.580	014° 40'.620
U	35° 52'.100	014° 40'.620
V	35° 52'.100	014° 38'.580

is being extended Southward (shown hatched in magenta on attached chart) and will be bounded by the following positions:

Position	Latitude (N)	Longitude (E)
S	35° 53'.580	014° 38'.580
T	35° 53'.580	014° 40'.620
W	35° 50'.100	014° 40'.620
X	35° 50'.100	014° 38'.580

This extension of the Offshore Aquaculture Zone will take place at a later date.

A notice to mariners will be issued with additional information including details of lights and marine aids to navigation.

Charts Affected                      BA Chart 194, 2538

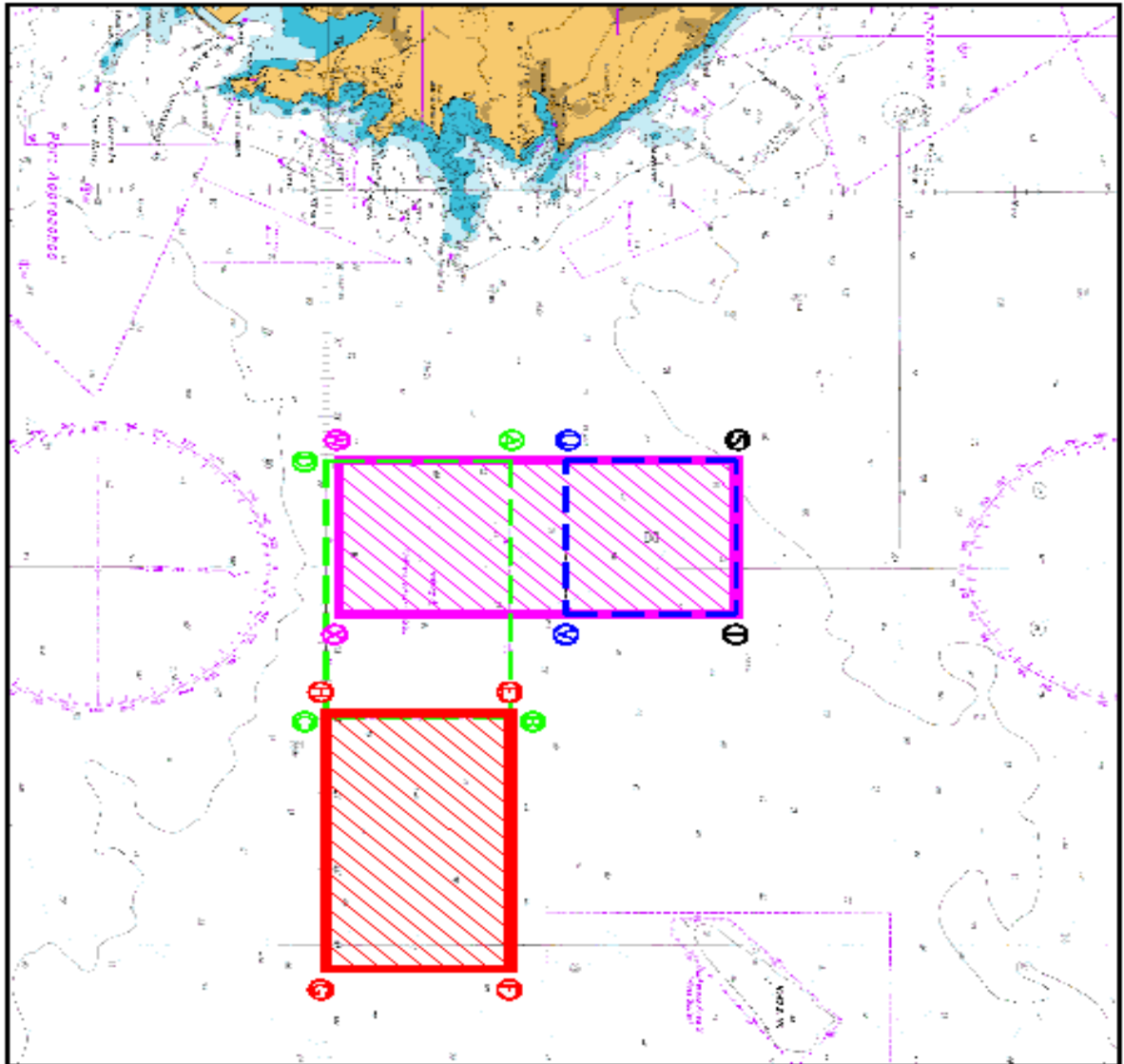


# Transport Malta

Malta Transport Centre  
Marsa, MRS 1917  
Malta

Tel: (356) 2122 2203  
Fax: (356) 2125 0365  
Email: [info.tm@transport.gov.mt](mailto:info.tm@transport.gov.mt)

[www.transport.gov.mt](http://www.transport.gov.mt)



© Crown Copyright 2004, 2001, 1984, 1979, 2003  
All rights reserved.  
The UK Hydrographic Office makes the information available to Transport Malta under the terms and conditions of agreement ID 1687/2002/004.  
118311/AM/02  
Whilst the UK Hydrographic Office has endeavored to ensure that the information is suitable for the purposes described, it accepts no liability for the results or actions taken by any user for any change or loss of any nature arising from the use. The national authority is solely responsible for the information shown here.