



PORTS AND YACHTING DIRECTORATE

LOCAL NOTICE TO MARINERS NO 137 of 2017

Our Ref: TM/PYD/63/95 Vol VI

21 December 2017



Transport Malta

Malta Transport Centre
Marsa, MRS 1917
Malta

Tel: (356) 2122 2203
Fax: (356) 2125 0365
Email: info.tm@transport.gov.mt

www.transport.gov.mt

Diving survey in Marsamxett Harbour

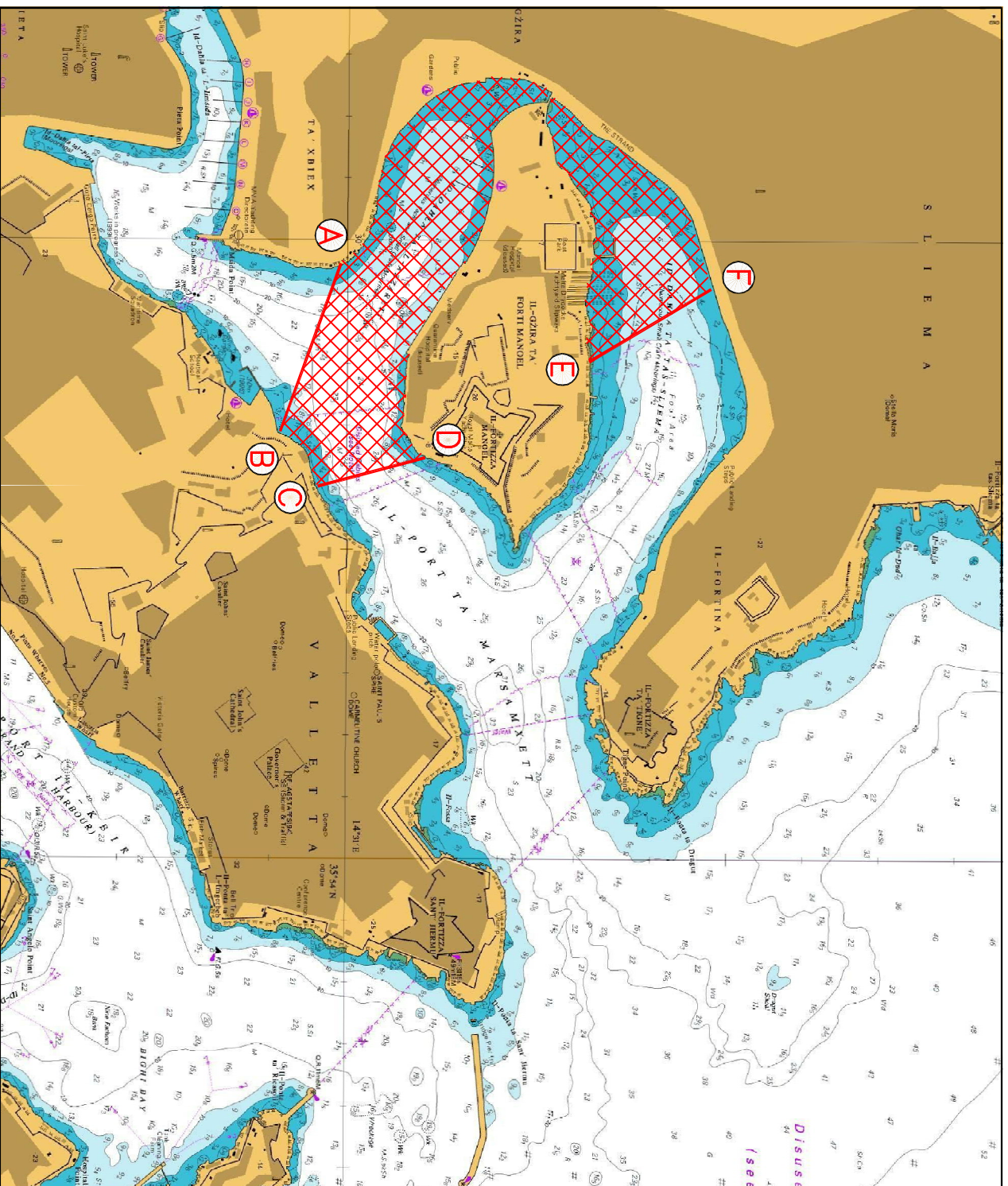
The Ports and Yachting Directorate, Transport Malta notifies mariners that diving surveys will be carried out in the area enclosed by the imaginary lines between A – B, C – D, E – F and intermediate coast (shown hatched on attached chart), in Marsamxett Harbour, between **Tuesday 2 January 2018 and Friday 16 February 2018**, weather permitting.

The survey will be carried out by scuba divers who will be assisted by the support vessel Atlantis II. The vessel will be moving slowly during the sampling period. The vessel will display the international code of Signals flag “A” when divers are making the survey.

Masters and operators of vessels are advised to keep a sharp lookout, navigate with caution and slow speed when navigating in the above indicated area. They are to give the above support vessel a wide berth of at least 100m. They are to comply with instructions given by Valletta Port Control (Valletta VTS) on VHF Channel 12.

Chart affected: BA 177

Positions referred to WGS 84 DATUM.



©British Crown Copyright 1970, 1983, 1986, 1988, 1999, 2000.
All rights reserved

The UK Hydrographic Office makes the accompanying data available to Transport Malta under the terms and conditions of agreement HD 1427/020930/01

DISCLAIMER

Whilst the UK Hydrographic Office has endeavoured to ensure that the material supplied is suitable for the purpose described, it accepts no liability (to the maximum extent permitted by law) for any damage or loss of any nature arising from its use. The material supplied is used entirely at the Recipient's own risk.