



PORTS AND YACHTING DIRECTORATE

Transport Malta

## LOCAL NOTICE TO MARINERS NO 124 of 2017

Our Ref: TM/PYD/133/96 V

02 November 2017

Malta Transport Centre  
Marsa, MRS 1917  
Malta

Tel: (356) 2122 2203  
Fax: (356) 2125 0365  
Email: [info.tm@transport.gov.mt](mailto:info.tm@transport.gov.mt)

[www.transport.gov.mt](http://www.transport.gov.mt)

### Diving and Geophysical surveys between Gozo and Comino

The Ports and Yachting Directorate, Transport Malta, notifies mariners that a diving and geophysical surveys will be carried out between Gozo and Comino on the line from points A to B as shown on attached chart. The field work will start on Tuesday 7<sup>th</sup> November 2017 and is expected to be completed by the end of November 2017.

Position	Latitude (N)	Longitude (E)
A	36° 01'.599	014° 19'.305 (Shore)
B	36° 01'.491	014° 19'.606

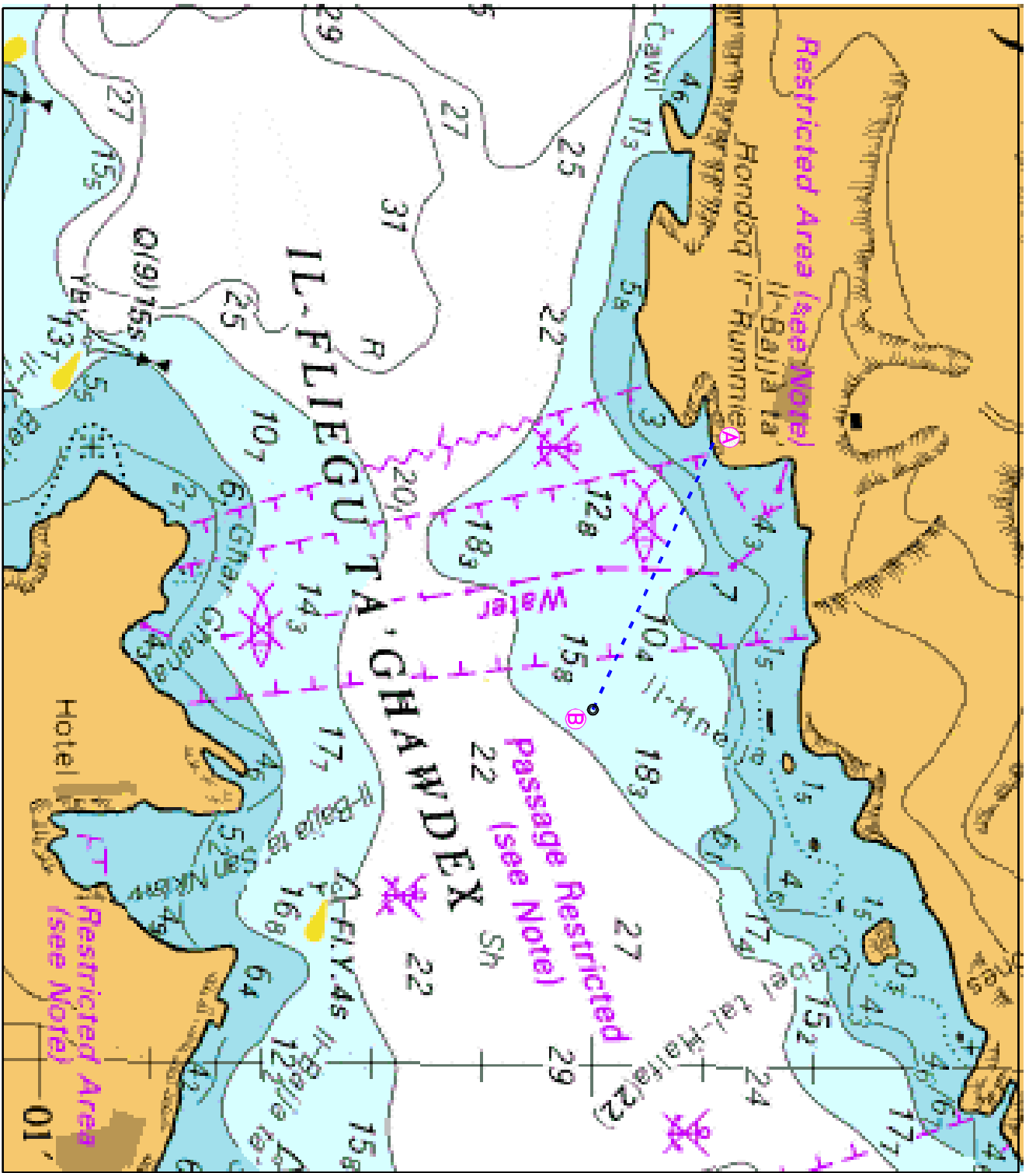
The diving and research survey will be carried out using the Rigid Hull Inflatable Boat "SIRARIS 1". During the survey the support vessel will be displaying the International Code of Signals Flag 'A' and 'D' as it will also have restricted maneuverability.

Mariners and operators of sea craft are advised to keep a sharp lookout and proceed at slow speed while navigating in the area. They are to give the above positions and the support vessel a wide berth of at least 100 metres.

Moreover, they are requested to comply with instructions given by Valletta Port Control (Valletta VTS) on VHF Channel 12.

Chart affected: BA 36

Positions referred to WGS 84 DATUM.



©British Crown Copyright 1970, 1983, 1986, 1988, 1999, 2000.  
All rights reserved

The UK Hydrographic Office makes the accompanying data available to Transport Malta under the terms and conditions of agreement HD 1427/080930/01.

**DISCLAIMER**

While the UK Hydrographic Office has endeavoured to ensure that the material supplied is suitable for the purposes described, it accepts no liability for the maximum extent permitted by law for any damage or loss of any nature arising from its use. The material supplied is used entirely at the Recipient's own risk.