



PORTS AND YACHTING DIRECTORATE

Transport Malta

LOCAL NOTICE TO MARINERS NO 113 of 2017

Our Ref: TM/PYD/132/89

01 October 2017

Malta Transport Centre
Marsa, MRS 1917
Malta

Tel: (356) 2122 2203
Fax: (356) 2125 0365
Email: info.tm@transport.gov.mt

www.transport.gov.mt

Filming in different localities from 6th October to 3rd November 2017

The Ports and Yachting Directorate, Transport Malta, notifies all mariners and sea vessel operators that filming activities will take place in different locations around Malta.

The date, times and areas are as follows:

Friday 6th October 2017 to Wednesday 11th October 2017 and Friday 3rd November 2017

Filming will be carried out on the Northeast side of Malta, between 0600 hours and 1900 hours daily. This consists of a boat sailing from points A, B, C and vice versa, points shown on attached chart 1. A safety distance of 200m and a clear horizon is requested.

Monday 9th to Wednesday 11th October 2017

Filming will be carried out at Ir-Ramla ta' Cirkewwa (Paradise Bay), between 0600 hours and 1900 hours. This consists of filming by a boat from point D, as shown on attached chart 2. A safety distance of 200m and a clear horizon is requested.

Thursday 12th October 2017

Filming will be carried out at the entrance of Mellieha Bay, between 0600 hours and 1900 hours. This consists of filming by divers from points E and F, as shown on attached chart 3. A safety distance of 200m and a clear horizon is requested.

Friday 13th October 2017

Filming consists of a boat sailing from the quay near Ricasoli towards Ricasoli Breakwater, between 0600 hours and 1900 hours. A safety distance of 100m is requested.

The following vessels will be assisting during the filming:

Gee Wiss, Maximus and MV Wilfred.



In case of bad weather during the above mentioned days, filming will be carried out in any of the following localities and a clear horizon is requested

Off Mgarr ix-Xini, shown as G on attached chart 4.

Off Ras il-Qala, shown as H on attached chart 4.

Off Dahlet ix-Xilep, shown as I on attached chart 4.

Off Bajja tal-Mellieha, shown as J on attached chart 4.

Off Rdum il-Qammieh, shown as K on attached chart 4.

Off Il-Bajja tac-Cirkewwa, shown as L on attached chart 4.

Mariners are requested to keep a sharp look out when sailing in the vicinity of the above areas.

Mariners and vessel operators are to keep watch on VHF Channel 12 and cooperate with the enforcement officers in the area. They are to comply with instructions issued by Valletta Port Control (Valletta VTS) on VHF channel 12.

Charts affected: BA 2537, 2538, 177 and 211A.

©British Crown Copyright 1970, 1983, 1986, 1988, 1999, 2000.
All rights reserved

The UK Hydrographic Office makes the accompanying data available to Malta Maritime Authority under the terms and conditions of agreement HD 1427/02030/01

DISCLAIMER

Whilst the UK Hydrographic Office has endeavoured to ensure that the material supplied is suitable for the purpose described, it accepts no liability (to the maximum extent permitted by law) for any damage or loss of any nature arising from its use. The material supplied is used entirely at the Recipient's own risk.

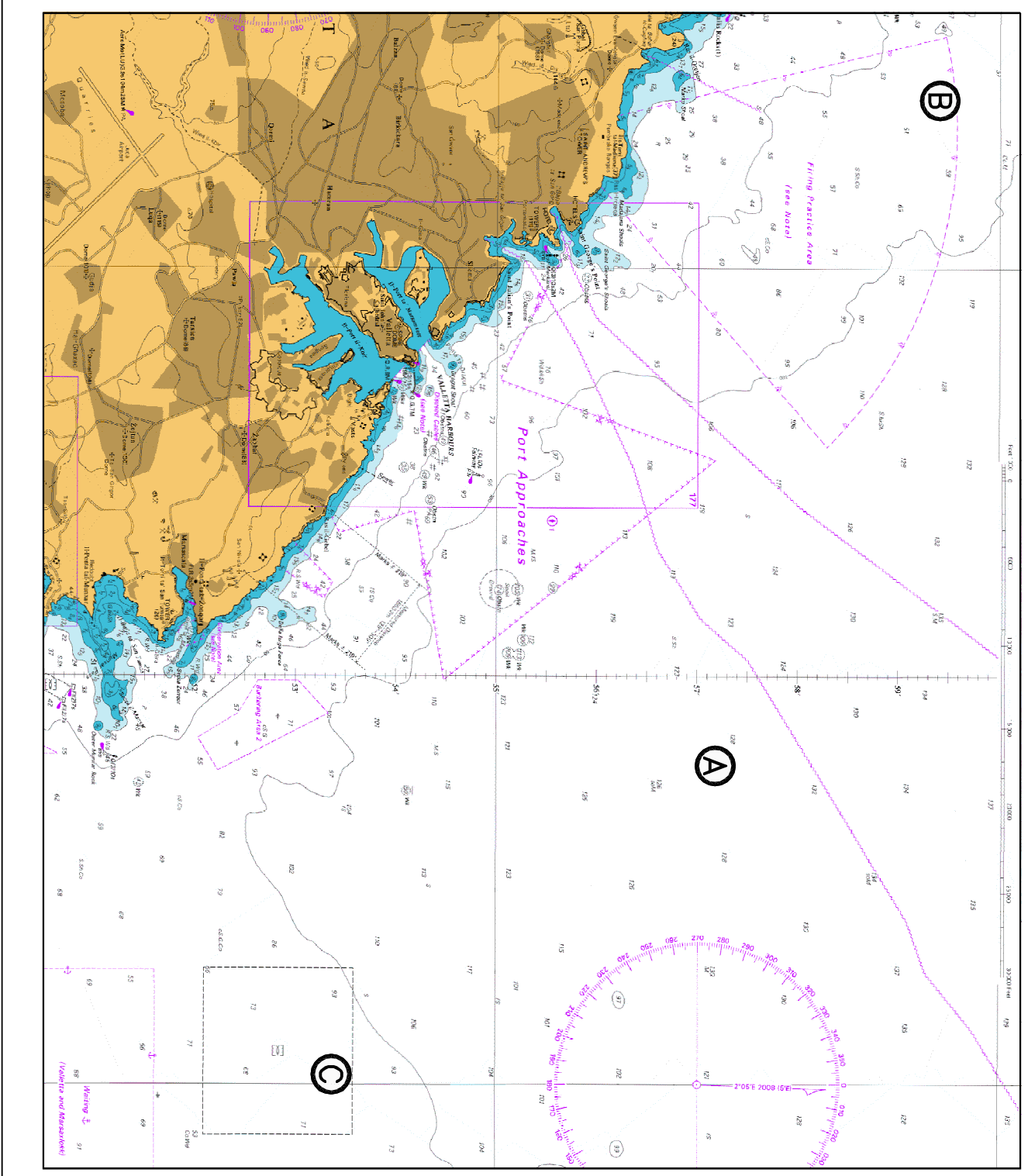


Chart 1

SCALE 1:25 000

Whilst the UK Hydrographic Office has endeavoured to ensure that the material supplied is suitable for the purpose described, it accepts no liability (to the maximum extent permitted by law) for any damage or loss of any nature arising from its use. The material supplied is used entirely at the Recipient's own risk.