



**Transport Malta**

**PORTS AND YACHTING DIRECTORATE**

**LOCAL NOTICE TO MARINERS NO 107 of 2017**

Our Ref: TM/PYD//220/94 Vol. II

22 September 2017

Malta Transport Centre  
Marsa, MRS 1917  
Malta

Tel: (356) 2122 2203  
Fax: (356) 2125 0365  
Email: [info.tm@transport.gov.mt](mailto:info.tm@transport.gov.mt)

[www.transport.gov.mt](http://www.transport.gov.mt)

**Rolex Middle Sea Race 2017**

The Ports and Yachting Directorate, Transport Malta, notifies that the Royal Malta Yacht Club will be holding the Rolex Middle Sea Race on Saturday, 21<sup>st</sup> October 2017. In addition a coastal race will also be held on Wednesday 18<sup>th</sup> October 2017.

The race programme is as follows:

**a. Wednesday, 18<sup>th</sup> October 2017**

The Coastal Race starts at 1000 hours.

The start is from Marsamxett Harbour, and depending on the weather conditions, will proceed either to Comino and/or Gozo or to Munxar and/or Filfa and finish at Marsamxett Harbour.

Mariners are requested to keep the Marsamxett fairway clear during the start of the Coastal race and to keep a sharp lookout during the remaining hours of Wednesday, 18<sup>th</sup> October 2017.

**b. Saturday, 21<sup>st</sup> October 2017**

The Rolex Middle Sea Race starts at approximately 1100 hours.

The start is from the Grand Harbour, at an imaginary line from an inflatable buoy near Saint Angelo Point to the Valletta Saluting Battery mast.

The yachts shall then proceed in a North - Easterly direction along the Channel in the Grand Harbour to a yellow inflatable buoy, bearing the sponsor's logo, positioned outside the Saint Elmo Breakwater. The buoy shown as 1 on attached charts will be in the following approximate position:

**LATITUDE (N)**

35° 54'.160

**LONGITUDE (E)**

014° 31'.540

The yachts shall then proceed in a North – Westerly direction towards St George's shoals where a second yellow inflatable buoy, bearing the sponsor's logo will be positioned. The buoy shown as 2 on the attached chart 2 will be in the following approximate position:



**LATITUDE (N)**

35° 55'.650

**LONGITUDE (E)**

014° 30'.070

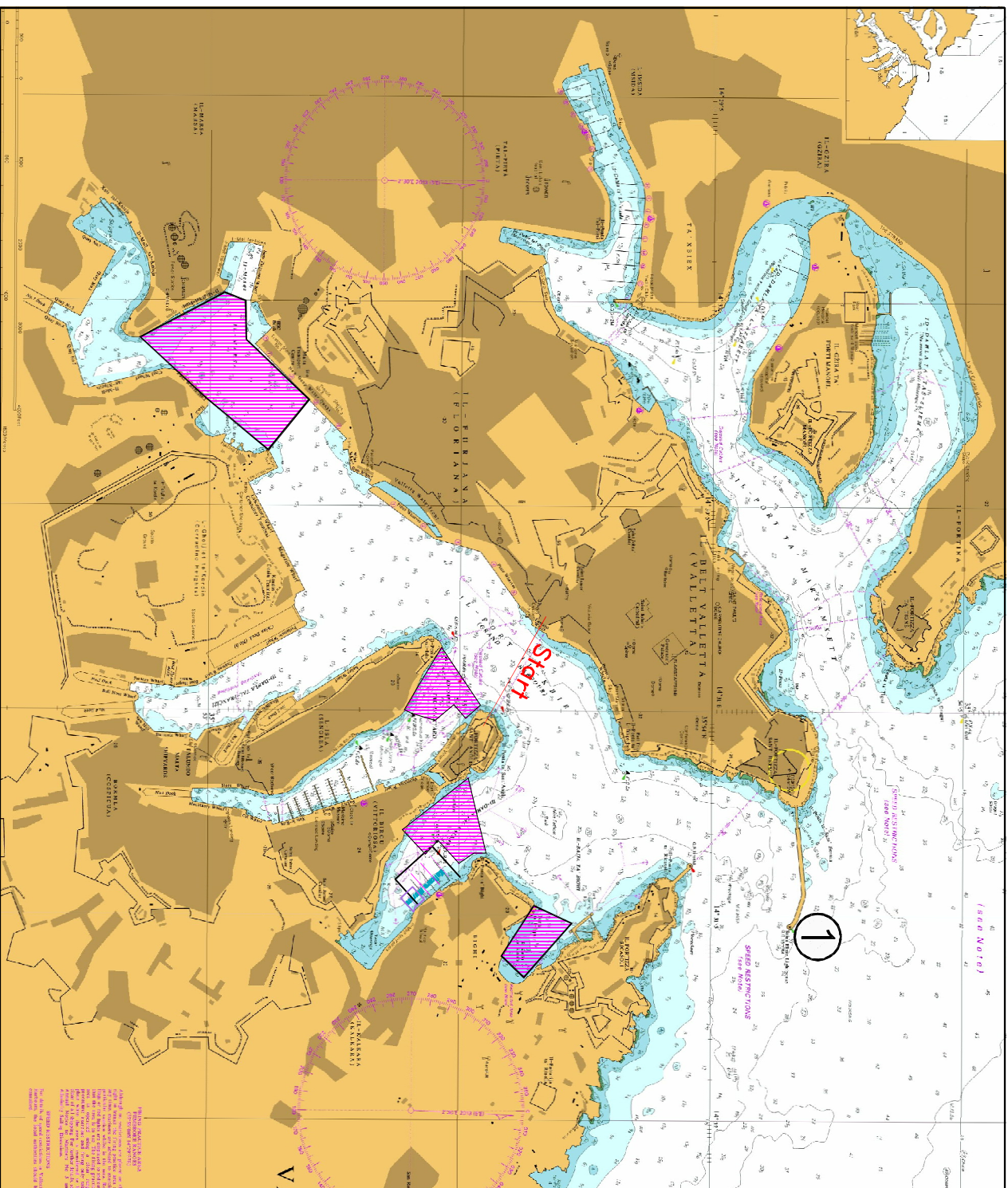
The yachts shall then proceed in a North – North Easterly direction towards Sicily.

Mariners are advised that on Saturday 21<sup>st</sup> October, 2017 between 0900 hours and 1500 hours or such time as may be communicated by Valletta Port Control (Valletta VTS) if earlier, the Grand Harbour shall be closed for all traffic not directly related to the race. Between these times all other vessels shall be required to remain within designated areas in the inner harbour up to Ras Hanzir, in Dockyard Creek, Kalkara Creek and Rinella Bay. (Areas are shown hatched in magenta on attached chart 1).

Mariners are to navigate with caution and to keep a sharp lookout when in the vicinity to the above-mentioned courses and positions and when sighted, give the participants a wide berth, especially around the inflatable buoys. They are to obey any instructions that are issued by Valletta Port Control (Valletta VTS), AFM Patrol Boats and Transport Malta, Enforcement Vessels that are in the area.

Positions are in WGS 84 Datum.

Chart affected BA Chart 177.



©British Crown Copyright 1970, 1983, 1986, 1988, 1999, 2000.  
All rights reserved

The UK Hydrographic Office makes the accompanying data available to Transport Malta under the terms and conditions of agreement HD 1427/020930/01

#### DISCLAIMER

Whilst the UK Hydrographic Office has endeavoured to ensure that the material supplied is suitable for the purpose described, it accepts no liability (to the maximum extent permitted by law) for any damage or loss of any nature arising from its use. The material supplied is used entirely at the Recipient's own risk.



©British Crown Copyright 1970, 1983, 1986, 1988, 1999, 2000.  
All rights reserved

The UK Hydrographic Office makes the accompanying data available to Transport Malta under the terms and conditions of agreement HD 1427/020930/01.

DISCLAIMER

Whilst the UK Hydrographic Office has endeavoured to ensure that the material supplied is suitable for the purpose described, it accepts no liability (to the maximum extent permitted by law) for any damage or loss of any nature arising from its use. The material supplied is used entirely at the Recipient's own risk.

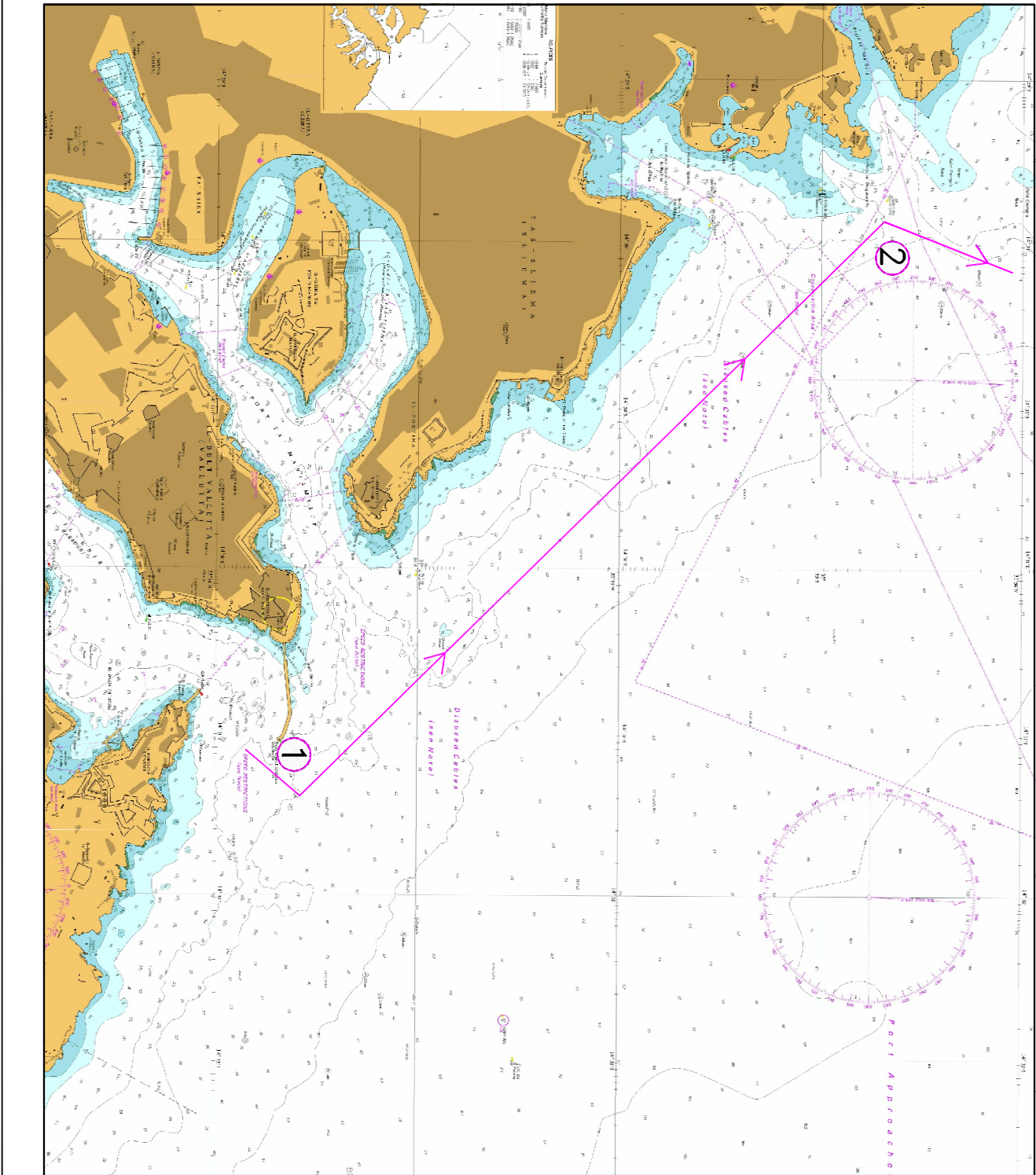


Chart 2