



Transport Malta

PORTS AND YACHTING DIRECTORATE

LOCAL NOTICE TO MARINERS NO 78 of 2017

Our Ref: TM/PYD/83/97 Vol IV

24 July 2017

Malta Transport Centre
Marsa, MRS 1917
Malta

Tel: (356) 2122 2203
Fax: (356) 2125 0365
Email: info.tm@transport.gov.mt

www.transport.gov.mt

Transportation of Statue from Marsaxlokk to Birzebbugia by vessel

The Ports and Yachting Directorate, Transport Malta, would like to notify mariners that the Statue of St. Peter will be loaded on a vessel at Marsaxlokk and transported from there to Birzebbugia, on Monday 31st July 2017 and Thursday 3rd August 2017.

On Monday 31st July 2017

The activity consists of vessels sailing between St. George's Bay – Birzebbugia (point A), and Marsaxlokk (point B), in both directions. The activity starts at 1730 hours and will be completed by 1830 hours.

On Thursday 3rd August 2017

The activity consists of vessels sailing between George's Bay – Birzebbugia (point A) to Marsaxlokk (point B) and back from Marsaxlokk (point B) to Pretty Bay – Birzebbugia (point C). The activity starts at 1830 hours and will be completed by 2030 hours.

Mariners are to navigate with caution at slow speed and to keep a sharp lookout when in the vicinity to the above-mentioned events and when sighted they are to give the participants a wide berth. They are to obey any instructions that are issued by Marsaxlokk Port Control (Marsaxlokk VTS) on VHF channel 14 and the organisers.

Chart affected BA Chart 36.

ferred to World Geodetic System (1984) LITTLE-DRIVED POSITIONS note).
 IALA Maritime Buoyage System
 (to port).

verse Mercator.
 origin, scale, date and limits of the
 grid used in compiling the chart are shown
 in the margin. The topography is derived chiefly
 from aerial photography.

SATELLITE-DERIVED POSITIONS

Positions obtained from satellite navigation systems, such as the Global Positioning System (GPS), are normally referred to the World Geodetic System 1984 Datum. Such positions can be plotted directly on this chart.

CURRENT

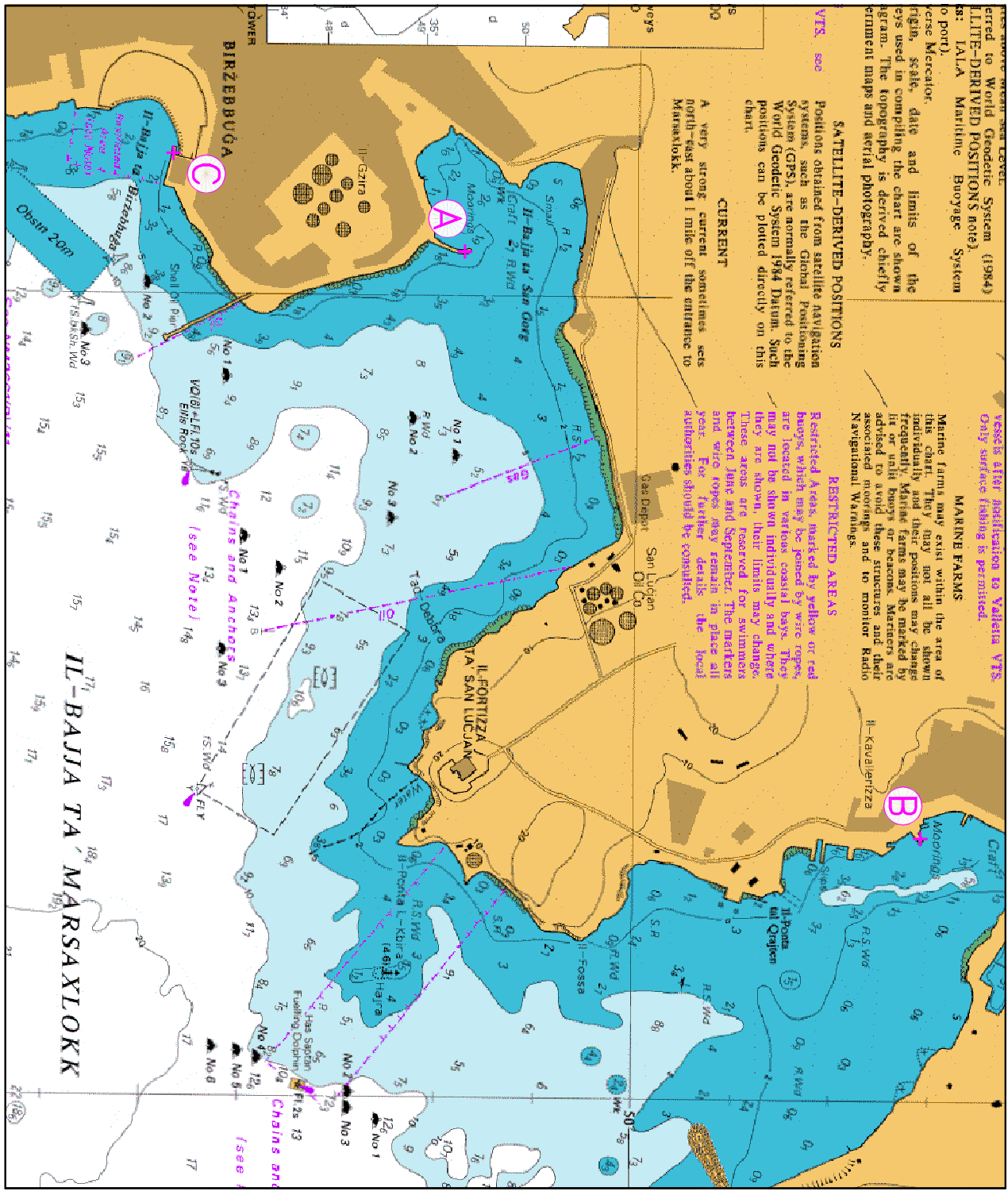
A very strong current sometimes sets north-east about 1 mile off the entrance to Marsaxlokk.

VESSEL AIR NOTIFICATION TO VALETTA VTS
Only surface fishing is permitted.

MARINE FARMS
 Marine farms may exist within the area of this chart. They may not all be shown individually and their positions may change frequently. Marine farms may be marked by a flag or other buoy or beacon. Mariners are advised to avoid these structures and their associated moorings and to monitor Radio Navigational Warnings.

RESTRICTED AREAS

Restricted Areas, marked by yellow or red buoys, which may be joined by wire ropes, are located in various coastal bays. They may not be shown individually and where they are shown, their limits may change. These areas are reserved for swimmers between June and September. The moorings and wire ropes may remain in place all year. For further details, the local authorities should be consulted.



©British Crown Copyright 1970, 1983, 1986, 1988, 1999, 2000.
 All rights reserved
 The UK Hydrographic Office makes the accompanying data available to Transport Malta under the terms and conditions of agreement HD 1427/080930/01
DISCLAIMER

While the UK Hydrographic Office has endeavoured to ensure that the material supplied is suitable for the purposes for which it is accepted, no liability (to the maximum extent permitted by law) for any damage or loss of any nature arising from its use. The material supplied is used entirely at the Recipient's own risk.