



PORTS AND YACHTING DIRECTORATE

Transport Malta

LOCAL NOTICE TO MARINERS No 73 of 2017

Malta Transport Centre
Marsa, MRS 1917
Malta

Our Ref: TM/PYD/26/95/2

Tel: (356) 2122 2203
Fax: (356) 2125 0365
Email: info.tm@transport.gov.mt

18 July 2017

www.transport.gov.mt

Firework Displays in Grand Harbour - Vittoriosa Feast

The Ports and Yachting Directorate, Transport Malta, notifies that firework displays will be let off from Bighi shore (as shown on attached chart) and also from barges moored off Bighi Point on the following dates and times:-

From Bighi shore:

Monday 31 July 2017 from 0800 hrs till 0830 hrs, from 1200 hrs till 1230 hrs and from 2030 hrs till 2100 hrs.

From Barges:

Sunday 6 August 2017 from 0800 hrs till 0815 hrs, from 1200 hrs till 1215 hrs and from 2030 hrs till 2100 hrs.

Monday 7 August 2017 from 0800 hrs till 0815 hrs, from 1200 hrs till 1230 hrs and from 2030 hrs till 2130 hrs.

Tuesday 8 August 2017 from 0800 hrs till 0815 hrs, from 1200 hrs till 1230 hrs and from 2045 hrs till 2245 hrs.

Wednesday 9 August 2017 from 0915 hrs till 1030 hrs, from 1200 hrs till 1230 hrs, from 1900 hrs till 2100 hrs and from 2200 hrs till 2359 hrs.

Thursday 10 August 2017 from 0800 hrs till 0900 hrs, from 1200 hrs till 1300 hrs and from 1915 hrs till 2359 hrs.

Barges position:

The barges shall be moored on Friday 4 August, 2017 in the following positions:

	LATITUDE (N)	LONGITUDE (E)
Y	35°53'.614	14°31'.256
Z	35°53'.668	14°31'.207



Transport Malta

The barges will be removed on Friday 11 August 2017.

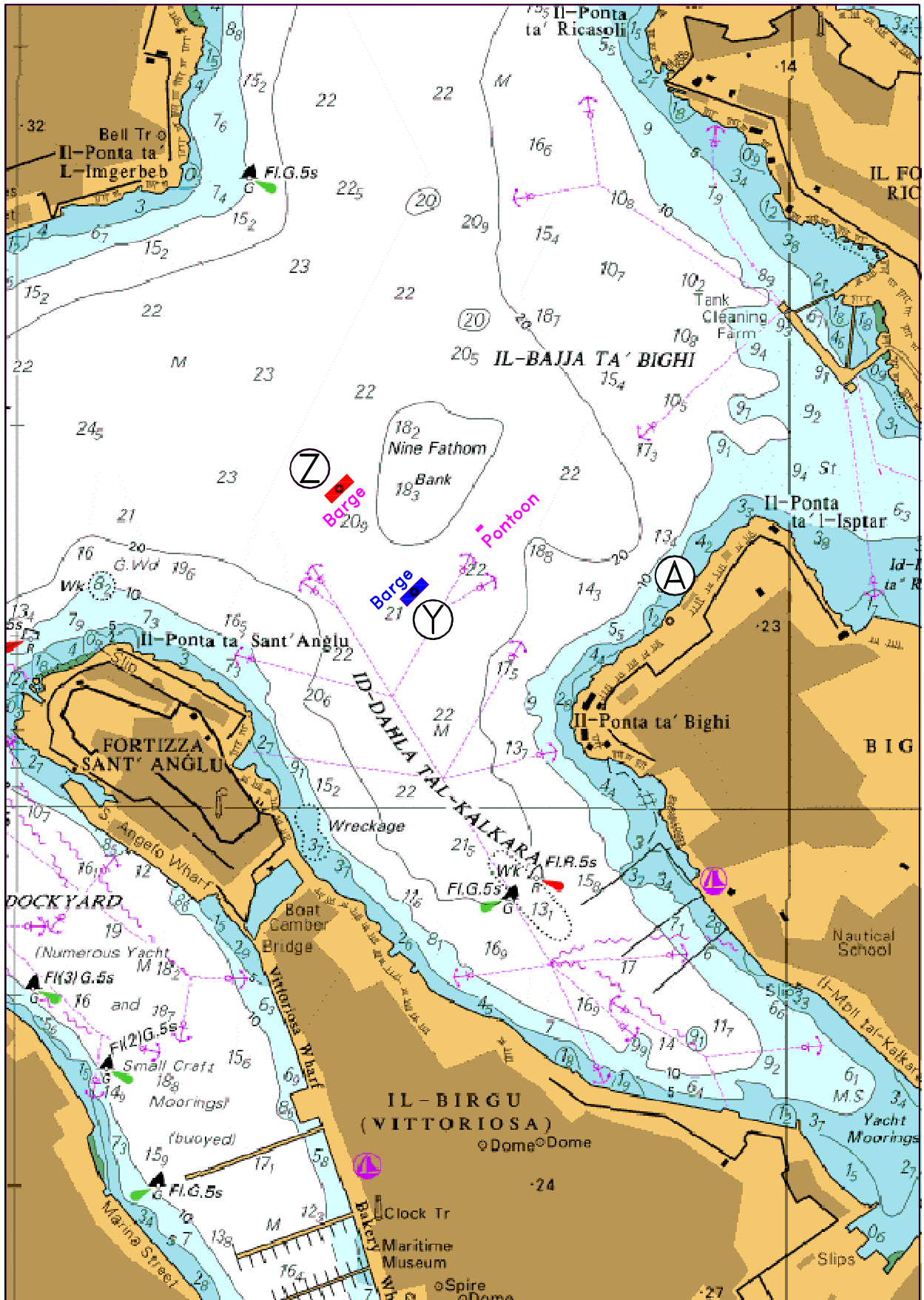
A wide berth of 200 meters is requested from Bigli Shore and from the position of the barges on the days indicated above as the barges will be loaded with fireworks.

Transport Malta will accept no Liabilities whatsoever for any vessels that are within the 200m distance during the above mentioned dates and times.

Mariners are to navigate with caution and slow speed. Instructions and directions given by Valletta Port Control (Valletta VTS) on VHF channel 12 are to be complied with.

Chart affected BA Chart 177.

Positions are referred to WGS 84 Datum.



©British Crown Copyright 1970, 1983, 1986, 1988, 1999, 2000.
All rights reserved

The UK Hydrographic Office makes the accompanying data available to Transport Malta under the terms and conditions of agreement HD 1427/020930/01.

DISCLAIMER

Whilst the UK Hydrographic Office has endeavoured to ensure that the material supplied is suitable for the purpose described, it accepts no liability (to the maximum extent permitted by law) for any damage or loss of any nature arising from its use. The material supplied is used entirely at the Recipient's own risk.