



PORTS AND YACHTING DIRECTORATE

Transport Malta

LOCAL NOTICE TO MARINERS NO 25 of 2017

Our Ref: TM/PYD/111/92

13 April 2017

Malta Transport Centre
Marsa, MRS 1917
Malta

Tel: (356) 2122 2203
Fax: (356) 2125 0365
Email: info.tm@transport.gov.mt

www.transport.gov.mt

Blue Lagoon and Santa Maria Bay Comino: Swimmers' Zones

The Ports and Yachting Directorate, Transport Malta notifies all bathers, mariners and owners of vessels that the following arrangements will be made for Blue Lagoon and Santa Maria Bay in the North Comino channel for the period between 1 May 2017 and 15 October 2017

1a) Blue Lagoon Swimmers' Zone

No vessels or objects which may endanger the safety of bathers, including any type of fishing gear/implements, shall be used within a swimmers' zone. The swimmers' zone is being reserved exclusively for bathers and is delineated by the following coordinates:-

POSITIONS	LATITUDE (N)	LONGITUDE (E)	
1A	36° 00'.893	014° 19'.281	(Shore)
1B	36° 00'.898	014° 19'.289	
1C	36° 00'.825	014° 19'.351	
1D	36° 00'.846	014° 19'.440	
1E	36° 00'.854	014° 19'.448	(Shore)
1F	36° 00'.751	014° 19'.471	(Shore)
1G	36° 00'.740	014° 19'.390	(Shore)

1b) Mooring areas for Commercial vessels

2 mooring areas are being assigned for Commercial vessels. The boundaries of these mooring areas are delineated by the following coordinates:-

POSITIONS	LATITUDE (N)	LONGITUDE (E)	
4	36° 01'.004	014° 19'.397	(Shore)
5	36° 00'.965	014° 19'.332	(Buoy)
6	36° 00'.927	014° 19'.364	
7	36° 00'.974	014° 19'.425	(Shore)
8	36° 00'.920	014° 19'.458	(Shore)
9	36° 00'.941	014° 19'.433	
10	36° 00'.904	014° 19'.383	
11	36° 00'.859	014° 19'.421	
12	36° 00'.866	014° 19'.439	(Shore)



Transport Malta

1c) Fairway

A fairway has been established as indicated in the chart attached Figure 1 and in the following positions. Special marks fitted with a yellow light flashing every 5 seconds will be placed at points **1, 2, 3** and **5**.

Points	Latitude (N)	Longitude (E)	
1	36° 00'.852	014° 19'.401	(Buoy)
2	36° 00'.913	014° 19'.346	(Buoy)
3	36° 00'.952	014° 19'.310	(Buoy)
5	36° 00'.965	014° 19'.332	(Buoy)
11	36° 00'.859	014° 19'.421	

10a) Santa Maria Bay (Inner) Swimmers' Zone

No vessels or objects which may endanger the safety of bathers, including any type of fishing gear/implements, shall be used within a swimmers' zone. The swimmers' zone is being reserved exclusively for bathers and is delineated by the following coordinates:-

POSITIONS	LATITUDE (N)	LONGITUDE (E)	
10A	36° 00'.996	014° 20'.180	(Shore)
10B	36° 01'.001	014° 20'.185	
10C	36° 00'.997	014° 20'.247	
10D	36° 00'.984	014° 20'.249	(Shore)

10b) Fairway

A fairway has been established as indicated in the chart attached Figure 10 and in the following positions. Special mark yellow buoys will be placed at points **1** and **2**

Points	Latitude (N)	Longitude (E)	
V	36° 00'.852	014° 19'.401	(Shore)
1	36° 00'.913	014° 19'.346	(Buoy)
X	36° 00'.952	014° 19'.310	
2	36° 00'.965	014° 19'.332	(Buoy)
Z	36° 00'.859	014° 19'.421	(Shore)



Transport Malta

The fairways are to be used solely for navigation and should otherwise be kept clear.

A minimum safety clearing distance of 5 metres from the swimmers' zone is to be maintained.

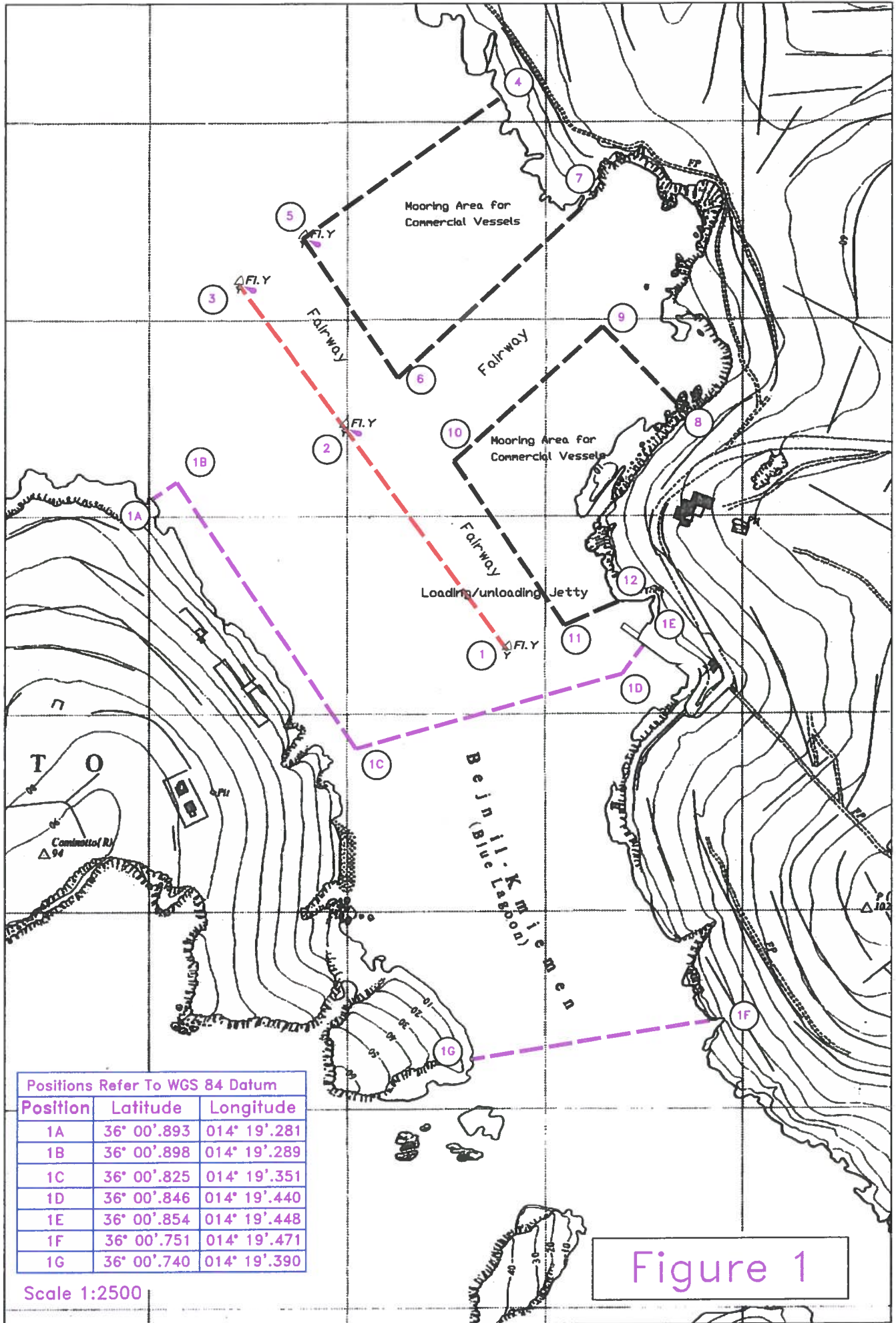
Nylon ropes supported by floats will delineate the swimmers' zone and may remain in place, two weeks after the stipulated date.

For the benefit and safety of all bathers and mariners, Transport Malta urges all visitors and commercial vessels to adhere to these arrangements. Enforcement Officers will be constantly patrolling the area.

Mariners are advised to keep a good lookout and navigate with caution and at slow speed in the North Comino Channel at Blue Lagoon and Santa Maria Bay. They are also reminded that it is prohibited to secure/moor any vessel to any of the marker buoys, swimmers' zone delineation markers and related gear belonging to Transport Malta.

All positions are referred to WGS 84 DATUM.

Chart Affected: BA 211



Positions Refer To WGS 84 Datum		
Position	Latitude	Longitude
10A	36° 00'.996	014° 20'.180
10B	36° 01'.001	014° 20'.185
10C	36° 00'.997	014° 20'.247
10D	36° 00'.984	014° 20'.249

Scale 1:2500

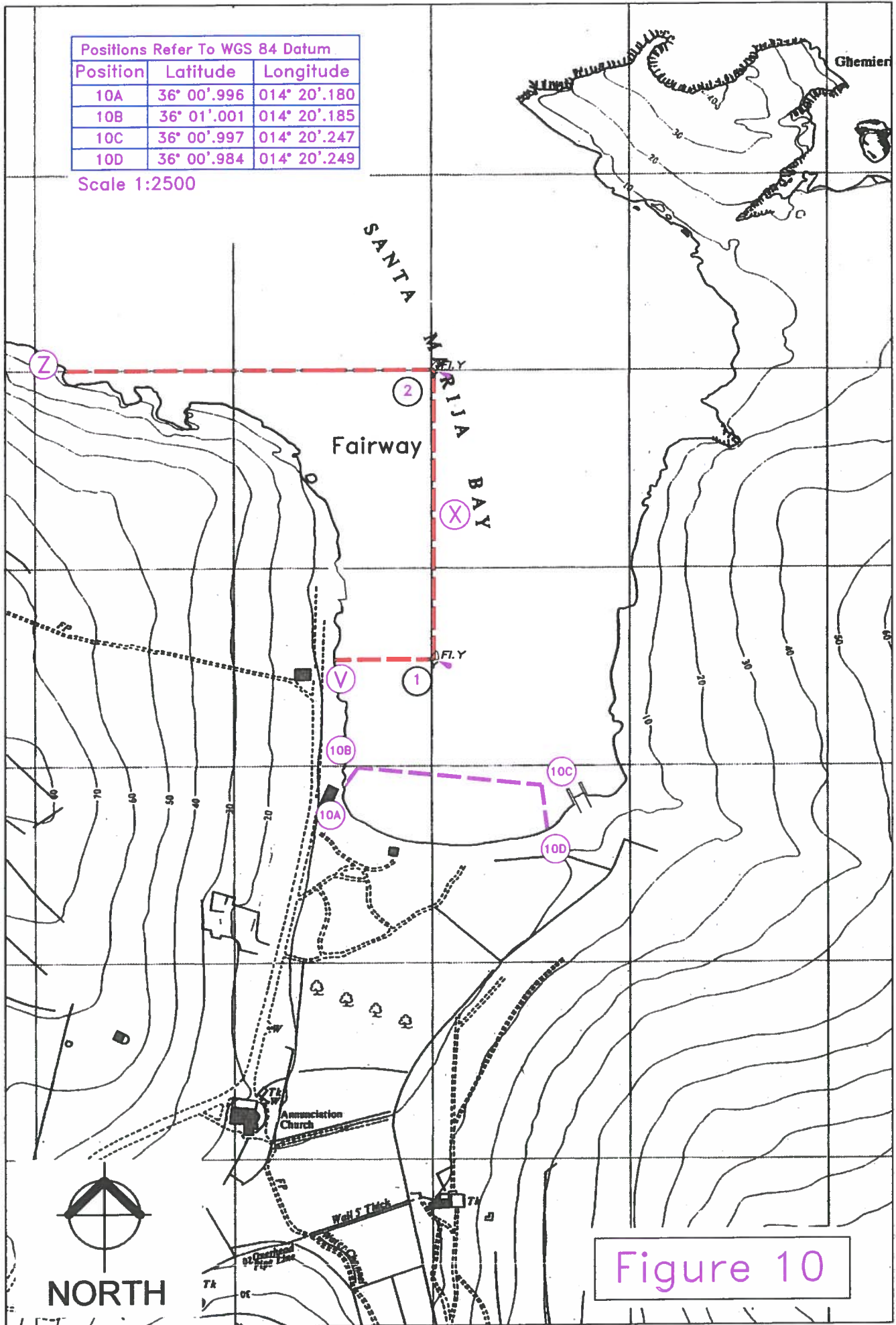


Figure 10