



PORTS AND YACHTING DIRECTORATE

Transport Malta

Malta Transport Centre  
Marsa, MRS 1917  
Malta

Tel: (356) 2122 2203  
Fax: (356) 2125 0365  
Email: [info.tm@transport.gov.mt](mailto:info.tm@transport.gov.mt)

[www.transport.gov.mt](http://www.transport.gov.mt)

## LOCAL NOTICE TO MARINERS No 20 of 2017

Our Ref: TM/PYD/38/99 Vol III

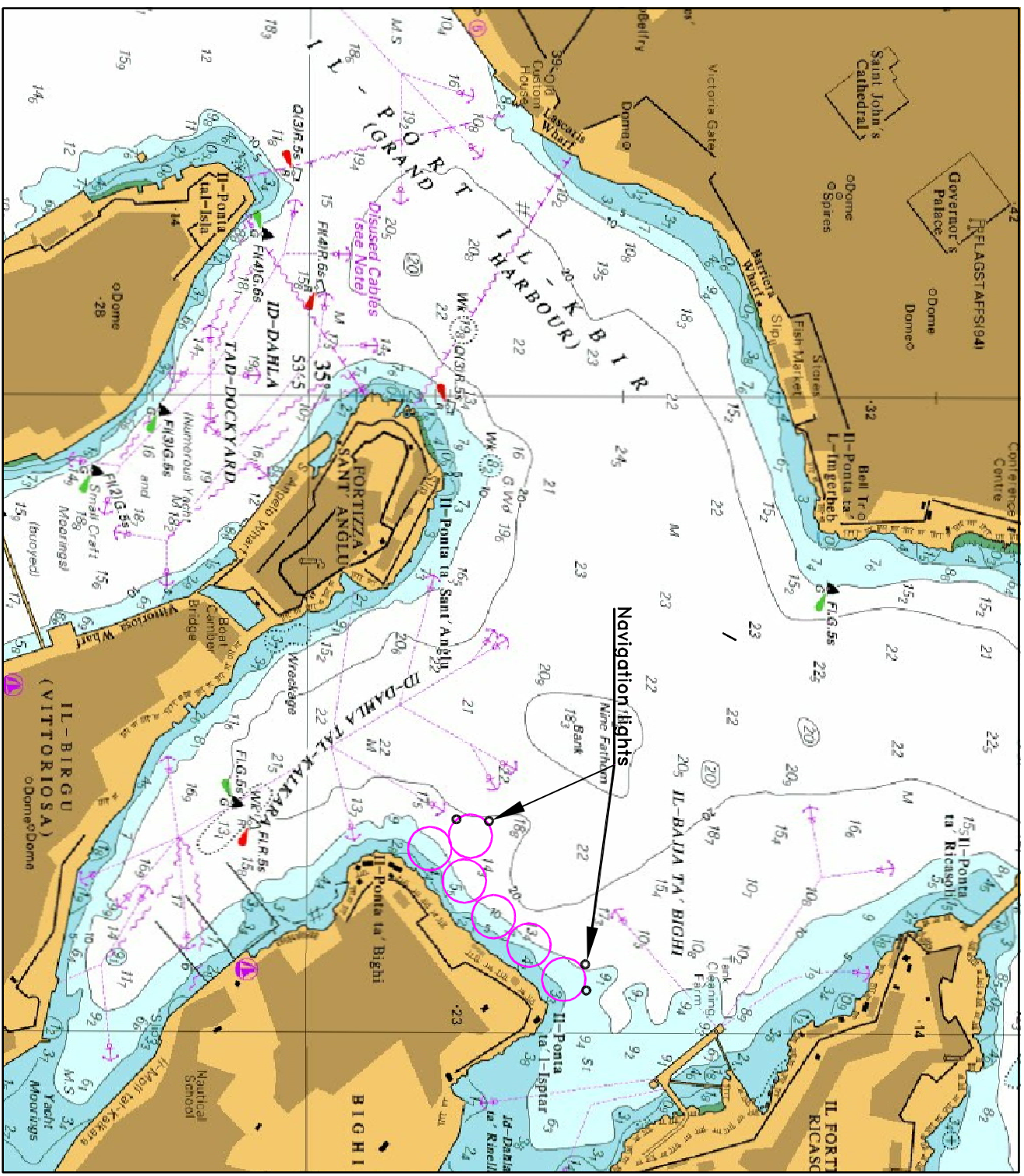
29 March 2017

### **Further to Local Notice to Mariners No. 12 of 2017 Re – Temporary Mooring of 6 Fish Farm Cages between il-Ponta ta' Bighi and il-Ponta ta' Isptar – Grand Harbour**

The Ports and Yachting Directorate, Transport Malta, informs mariners that further to Local Notice to Mariners No. 12 of 2017, Re – Temporary Mooring of 6 Fish Farm Cages between il-Ponta ta' Bighi and il-Ponta ta' Isptar – Grand Harbour, the cages will be re-positioned, as shown on the attached chart, until the end of May 2017.

The position and all other information in Local Notice to Mariners No. 12 of 2017 will remain.

Chart affected: BA chart 177, 2538



©British Crown Copyright 1970, 1983, 1986, 1988, 1989, 2000.  
 All rights reserved.  
 The UK Hydrographic Office makes the accompanying data available to Transport Malta under the terms and conditions of agreement HD 1427/020930/01.  
**DISCLAIMER**  
 Whilst the UK Hydrographic Office has endeavoured to ensure that the material supplied is suitable for the purposes described, it accepts no liability for the maximum extent permitted by law for any damage or loss of any nature arising from its use. The material supplied is used entirely at the Recipient's own risk.