



PORTS AND YACHTING DIRECTORATE

Transport Malta

LOCAL NOTICE TO MARINERS No 06 of 2017

Our Ref: TM/PYD/63/95 Vol VII

Malta Transport Centre
Marsa, MRS 1917
Malta

Tel: (356) 2122 2203
Fax: (356) 2125 0365
Email: info.tm@transport.gov.mt

1 February 2017

www.transport.gov.mt

Drilling Works for Geotechnical Investigations at Il-Ponta tal-Qrejten and the inner Breakwater, Marsaxlokk.

The Ports and Yachting Directorate, Transport Malta, notifies mariners that drilling works for geotechnical investigations will be carried out off il-Ponta tal-Qrejten and off the inner breakwater near the Delimara Power Station in Marsaxlokk Harbour.

These drilling works will be carried in the following two areas bounded by the following positions:

Area 1:- A, B, C, D and the coastline. Area 2:- W, X, Y, Z and the coastline as shown on the attached chart and in approximate positions:

Area 1	LATITUDE (N)	LONGITUDE (E)
A	35° 50.149'	14° 32.747'
B	35° 50.166'	14° 32.810'
C	35° 50.123'	14° 32.822'
D	35° 50.114'	14° 32.743'

Area 2	LATITUDE (N)	LONGITUDE (E)
W	35° 50.076'	14° 33.141'
X	35° 50.046'	14° 33.059'
Y	35° 50.091'	14° 33.035'
Z	35° 50.121'	14° 33.118'

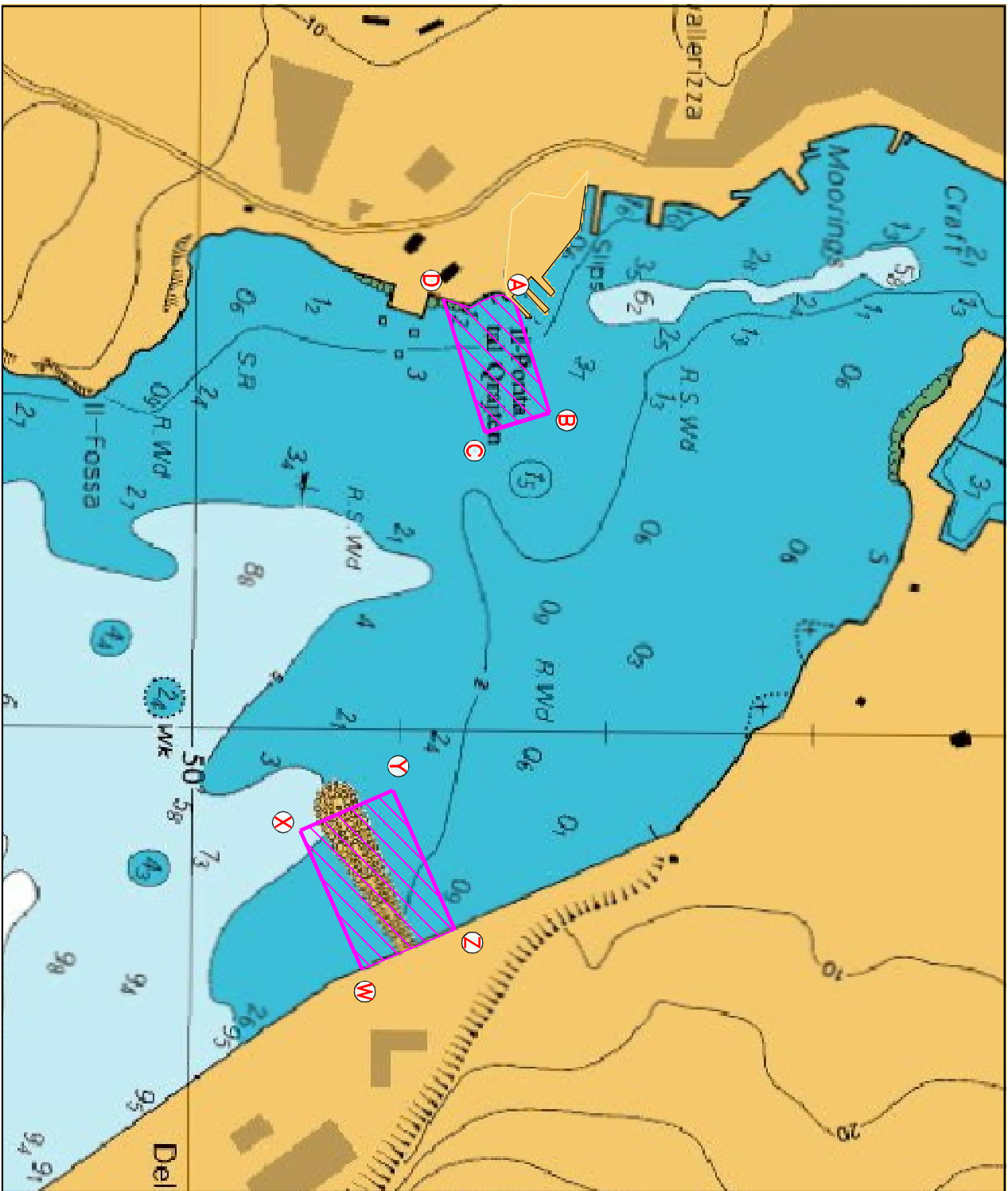
Weather permitting the works are expected to commence with immediate effect and completed by end of February 2017

They will be carried out from a flat barge which will be accompanied by a small tug boat. The barge may deploy anchors to hold it in position and may remain in the area during the night. The Barge will display the signals in accordance with the International Regulations for Preventing Collisions at Sea. Further more mariners and operators of vessels are advised to keep a sharp lookout, proceed at very slow speed and give the above area a wide berth of at least 300 meters.

Instructions given by Marsaxlokk Port Control (Marsaxlokk VTS) on VHF Channel 14 are to be complied with.

Chart affected: BA 36

Positions referred to WGS 84 DATUM.



©British Crown Copyright 1970, 1983, 1986, 1988, 1999, 2000.
All rights reserved

The UK Hydrographic Office makes the accompanying data available to Transport Malta under the terms and conditions of agreement HD 1427/080930/01.

DISCLAIMER

While the UK Hydrographic Office has endeavoured to ensure that the material supplied is suitable for the purposes described, it accepts no liability for the maximum extent permitted by law for any damage or loss of any nature arising from its use. The material supplied is used entirely at the Recipient's own risk.