



Transport Malta

Malta Transport Centre
Marsa, MRS 1917
Malta

Tel: (356) 2122 2203
Fax: (356) 2125 0365
Email: info.tm@transport.gov.mt

www.transport.gov.mt

PORTS AND YACHTING DIRECTORATE

NOTICE TO MARINERS No 17 of 2015

Our Ref: **TM/PYD/ 65/03**

18 May 2015

Malta North-East Coast – Relocation of Fish Farm

Il-Mistra

Refer to Chart BA Chart 211B

Amend boundary of fish farm to the following positions:

	<u>Latitude (N)</u>	<u>Longitude (E)</u>
A	35° 57'. 340	14° 23'.670
B	35° 57'. 340	14° 23'.787
C	35° 57'. 426	14° 23'.787
D	35° 57'. 426	14° 23'.719
E	35° 57'. 384	14° 23'.670

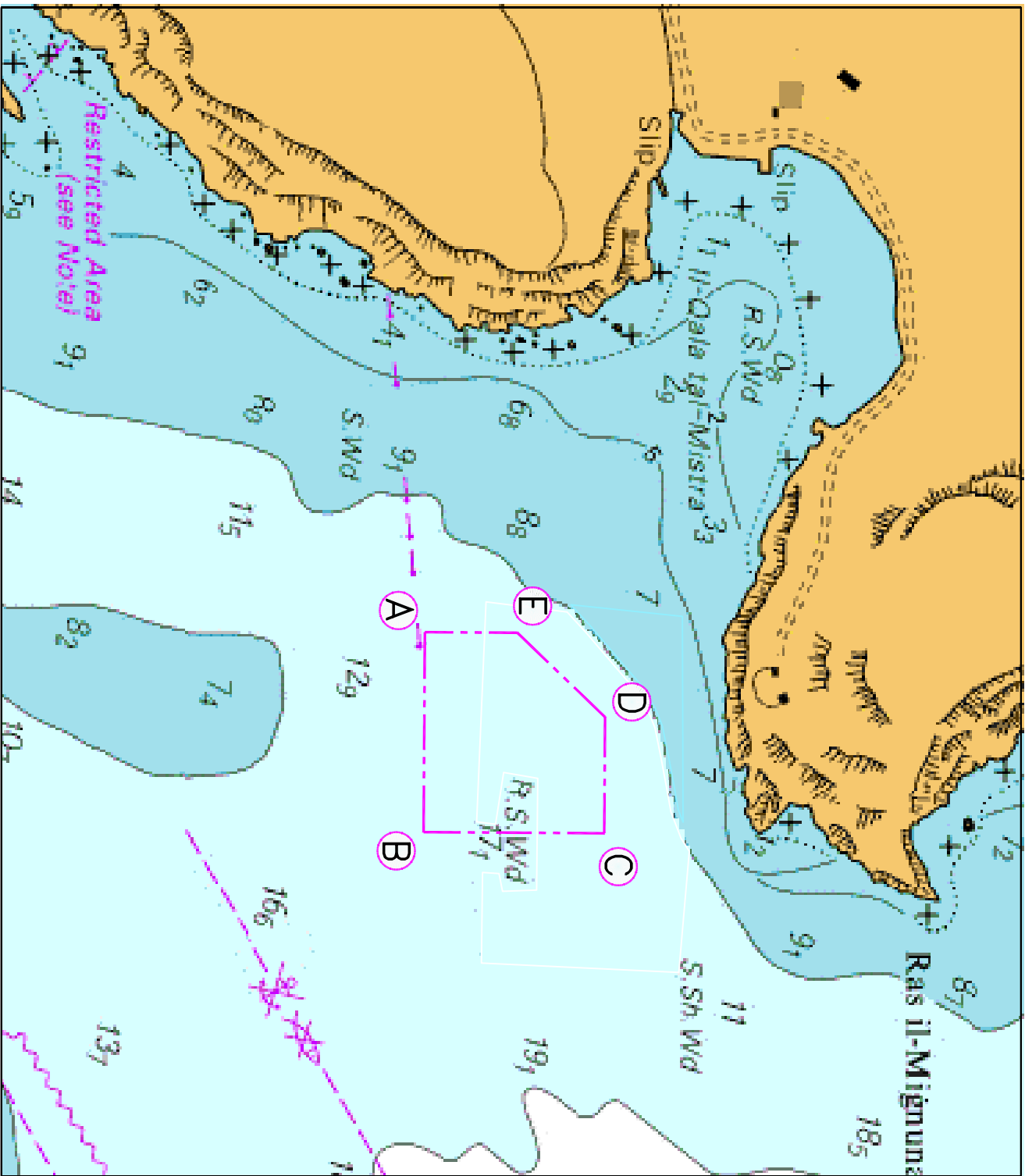
Conical light buoys 2 metres in height with special marks for day markers and flashing yellow, with a range of light of one (1) Nautical Mile will be positioned at A, B, C, D and E above.

A wire rope supported by floats has been placed connecting all the above positions.

Mariners are to note the above amendments and give a wide berth.

Position in WGS 84 Datum.

Chart Affected: BA Chart 211 B, 211A, 2538.



©British Crown Copyright 1970, 1983, 1986, 1988, 1999, 2000. All rights reserved

The UK Hydrographic Office makes the accompanying data available to Transport Malta under the terms and conditions of agreement MD 1427/020930/01.

DISCLAIMER

Whilst the UK Hydrographic Office has endeavoured to ensure that the material supplied is suitable for the purpose described, it accepts no liability (to the maximum extent permitted by law) for any damage or loss of any nature arising from its use. The material supplied is used entirely at the Recipient's own risk.