



PORTS AND YACHTING DIRECTORATE

Transport Malta

NOTICE TO MARINERS NO 39 of 2016

Our Ref: **TM/PYD/ 299/81 Vol XII**

10 November 2016

Malta Transport Centre
Marsa, MRS 1917
Malta

Tel: (356) 2122 2203
Fax: (356) 2125 0365
Email: info.tm@transport.gov.mt

www.transport.gov.mt

Chart Correction

Reference is made to BA Chart 211D – GHAWDEX – IL-PORT TA' L'IMGARR

The Ports and Yachting Directorate, Transport Malta informs mariners of the following changes in Mgarr Harbour – Gozo (as shown on attached chart).

	Latitude (N)	Longitude (E)
1) Delete Pontoon centered on	36° 01'.579	014° 17'.922
2) Insert pontoon from to	36° 01'.577 36° 01'.585	014° 17'.918 014° 17'.956
3) Insert rectangular floating platform (12m by 10m) centered on	36° 01'.586	014° 17'.967
4) Replace Legends:		
Pontoon H with Pontoon C centered on	36° 01'.587	014° 18'.078
Pontoon G with Pontoon E centered on	36° 01'.587	014° 18'.049
Pontoon I with Pontoon F centered on	36° 01'.586	014° 18'.005
Pontoon F with Pontoon J centered on	36° 01'.555	014° 17'.925
Pontoon E with Pontoon L centered on	36° 01'.538	014° 17'.892
5) Insert Legends:		
Pontoon A centered on	36° 01'.605	014° 18'.115
Pontoon B centered on	36° 01'.601	014° 18'.093
Pontoon D centered on	36° 01'.586	014° 18'.056
Pontoon G centered on	36° 01'.582	014° 17'.998
Pontoon H centered on	36° 01'.583	014° 17'.931
Pontoon I centered on	36° 01'.577	014° 17'.932
Pontoon K centered on	36° 01'.555	014° 17'.918
Pontoon M centered on	36° 01'.536	014° 17'.885

Position is in WGS 84 Datum.

Chart Affected BA 211D

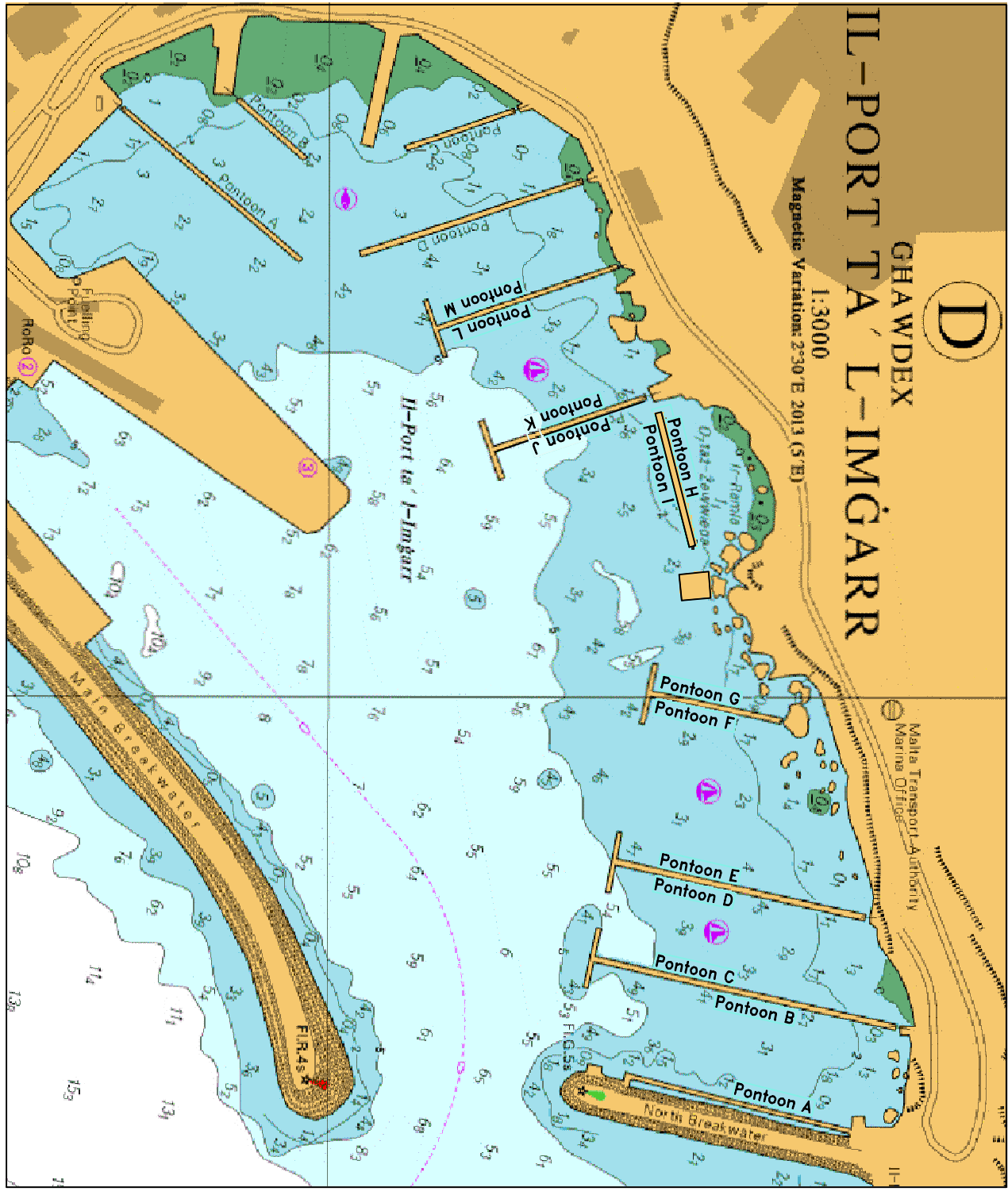
D

GHAWDEX

IL-PORT TA' L-IMĠARR

1:3000

Magnetic Variation: 230° E 2013 (5° E)



©British Crown Copyright 1970, 1983, 1986, 1988, 1999, 2000.
 All rights reserved

DISCLAIMER

Whilst Transport Malta has endeavoured to ensure that the material supplied is suitable for the purpose described, it accepts no liability (to the maximum extent permitted by law) for any damage or loss of any nature arising from its use. The material supplied is used entirely at the Recipient's own risk.