



PORTS AND YACHTING DIRECTORATE

NOTICE TO MARINERS No 18 of 2016

Our Ref: **TM/PYD/63/00**

20 May, 2016



Transport Malta

Malta Transport Centre
Marsa, MRS 1917
Malta

Tel: (356) 2122 2203
Fax: (356) 2125 0365
Email: info.tm@transport.gov.mt

www.transport.gov.mt

Life + Bahar Project - ROV Surveys - Offshore Malta - 2016

The Ports and Yachting Directorate notifies mariners that marine surveys will be carried out with the use of Remotely Operated Vehicle (ROV). These surveys will be carried out within the polygons A, B, C, D, E and F as shown on attached chart, by the vessel **Ranger**.

Polygon	Latitude (N)	Longitude (E)
A	36° 16'.860	013° 44'.898
	36° 10'.578	013° 56'.058
	35° 53'.754	014° 11'.454
	35° 44'.490	014° 23'.646
	35° 41'.928	014° 21'.270
	35° 53'.148	014° 03'.660
	36° 04'.956	013° 53'.712
	36° 14'.022	013° 42'.360
B	35° 58'.290	013° 47'.292
	35° 46'.536	014° 04'.536
	35° 44'.430	014° 02'.556
	35° 56'.256	013° 44'.616
C	36° 12'.360	014° 18'.756
	36° 10'.362	014° 20'.316
	36° 03'.126	014° 03'.060
	36° 05'.364	014° 00'.942
D	35° 36'.750	014° 38'.544
	35° 29'.418	014° 39'.108
	35° 29'.454	014° 33'.966
	36° 36'.420	014° 33'.780
E	35° 33'.072	014° 06'.924
	35° 33'.114	014° 23'.394
	35° 23'.472	014° 24'.756
	35° 26'.796	014° 10'.206
	35° 29'.400	014° 04'.734



Transport Malta

Malta Transport Centre
Marsa, MRS 1917
Malta

Tel: (356) 2122 2203
Fax: (356) 2125 0365
Email: info.tm@transport.gov.mt

www.transport.gov.mt

F	35° 52'.074	014° 35'.382
	35° 46'.662	014° 35'.412
	35° 46'.704	014° 58'.896
	36° 05'.604	014° 58'.890
	36° 05'.598	014° 52'.236

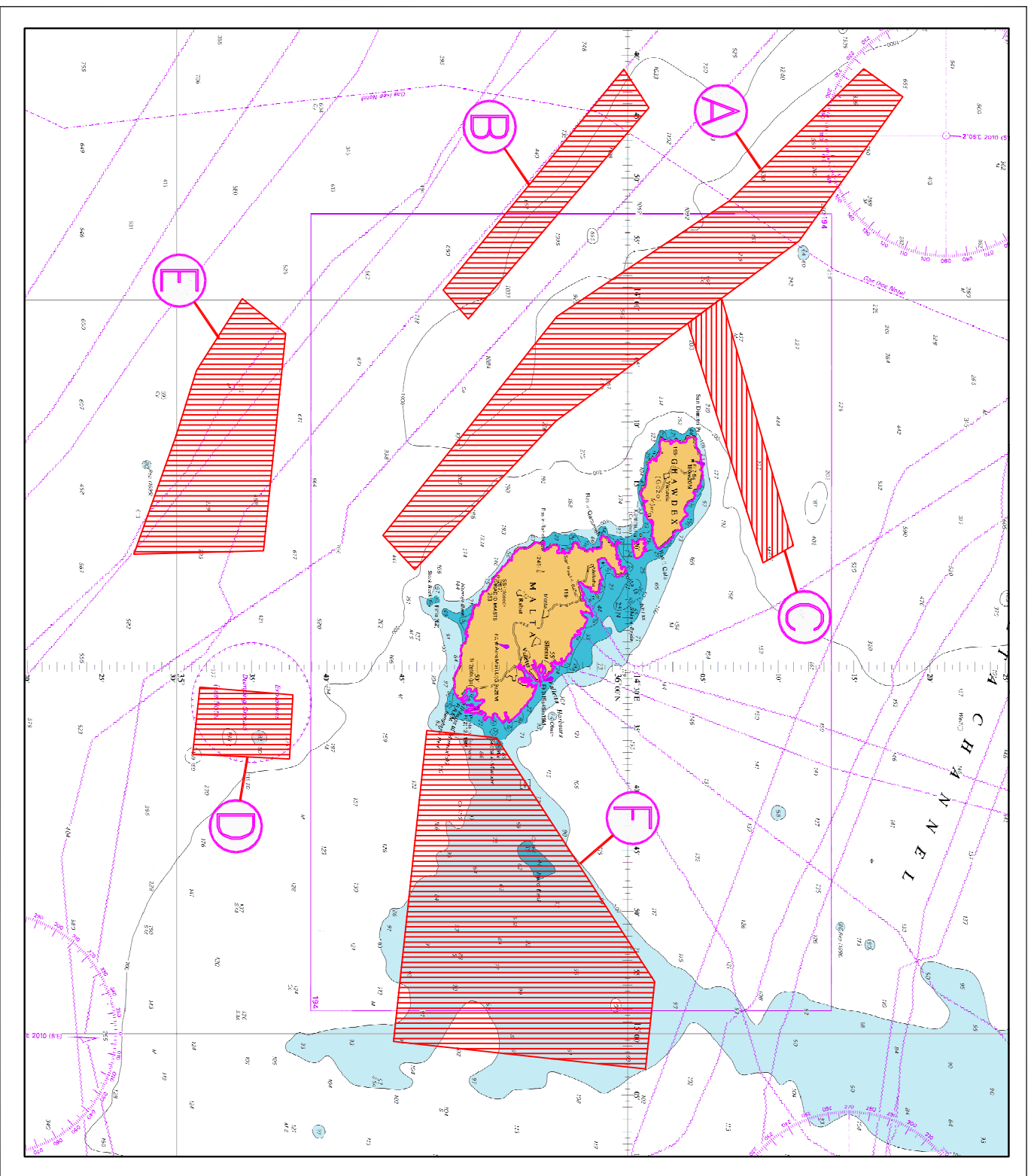
Weather permitting the surveys are scheduled to start on **27th May 2016** and are expected to be completed by **15th August 2016**. The exact areas of operation depend on the weather conditions and cannot be identified at this stage. The first area being started is within polygon **B**.

Since the vessel will be towing an ROV, it will be restricted in her ability to maneuver.

Mariners are instructed to navigate with caution when the above mentioned vessel is sighted and give a wide berth and observe a 1 nautical mile radius restricted zone which will be implemented around the catamaran vessel **Ranger**.

Further information will be made available through Malta VTS and Valletta Port Control (Valletta VTS) as the survey progresses.

Charts Affected: BA 194, 2124, 2123 INT 301 INT 302



©British Crown Copyright 1970, 1983, 1986, 1988, 1999, 2000.
All rights reserved

The UK Hydrographic Office makes the accompanying data available to Transport Malta under the terms and conditions of agreement HD 1427/020930/01

DISCLAIMER

Whilst the UK Hydrographic Office has endeavoured to ensure that the material supplied is suitable for the purposes described, it accepts no liability (to the maximum extent permitted by law) for any damage or loss of any nature arising from its use. The material supplied is used entirely at the Recipient's own risk.