



PORTS AND YACHTING DIRECTORATE

Transport Malta

NOTICE TO MARINERS NO 06 of 2016

Our Ref: TM/PYD/40/82 Vol III

Malta Transport Centre
Marsa, MRS 1917
Malta

Tel: (356) 2122 2203
Fax: (356) 2125 0365
Email: info.tm@transport.gov.mt

www.transport.gov.mt

09 February 2016

Live Firing Practice at Sea – Gunex 01/2016 - Pembroke Ranges between 22 February 2016 and 26 February 2016

The Ports and Yachting Directorate, Transport Malta notifies that the Armed Forces of Malta shall conduct a live firing practice exercise at sea from the Pembroke Ranges between Monday, 22 February 2016 and Friday 26 February 2016. The firing exercise will take place between 0800 hours and 1600 hours local time, (0700 hours to 1500 hours UTC).

The exercise will take place within the area enclosed by the following positions:

From Position A:

LATITUDE (N)

LONGITUDE (E)

35° 55'.54

14° 28'. 32

thence on a bearing of 335 True x 8.5 nautical miles to:

Position B:

LATITUDE (N)

LONGITUDE (E)

36° 03'.25

14° 23'.86

thence on an arc of a circle radius 8.5 nautical miles centred on position A to:

Position C:

LATITUDE (N)

LONGITUDE (E)

35° 59' .81

14° 37'. 39

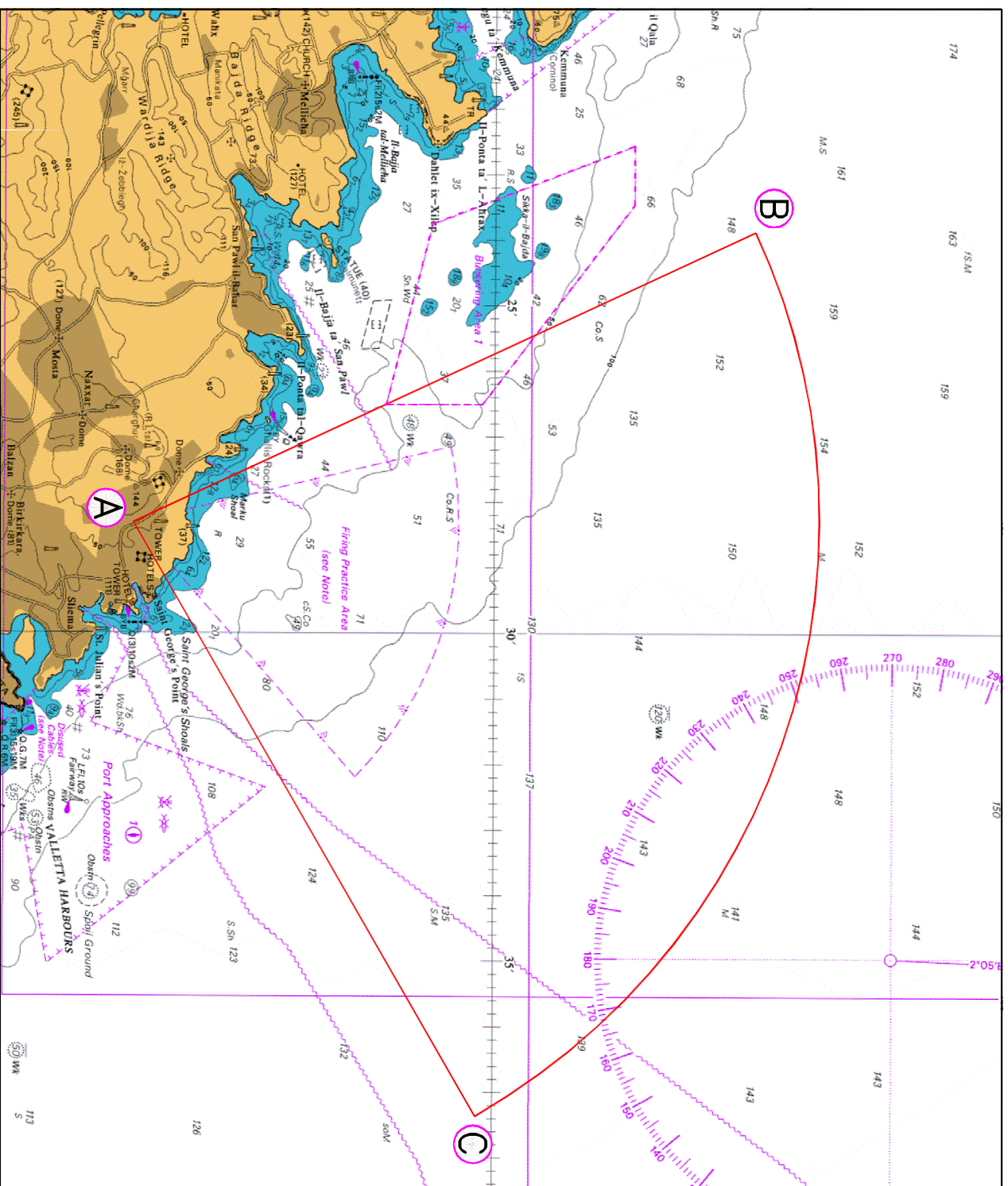
thence on a bearing of 240 True to position A.

As shown on attached chart

All vessels in the vicinity must proceed with caution and keep at least eight and a half nautical miles (8.5NM) off the Pembroke Coast on the dates and times indicated. Instructions given by AFM craft patrolling the area and Valletta VTS (Valletta Port Control Channel 12) are to be complied with at all times.

Chart affected BA 194, 2537 and 2538

Positions referred to WGS 84 DATUM



©British Crown Copyright 1970, 1983, 1986, 1988, 1989, 1999, 2000.
All rights reserved

The UK Hydrographic Office makes the accompanying data available to Transport Malta under the terms and conditions of agreement HD 1427/020930/01.

DISCLAIMER

Whilst the UK Hydrographic Office has endeavoured to ensure that the material shown is suitable for the purposes described, it accepts no liability (to the maximum extent permitted by law) for any damage or loss of any nature arising from its use. The material supplied is used entirely at the Recipient's own risk.