



PORTS AND YACHTING DIRECTORATE

Transport Malta

LOCAL NOTICE TO MARINERS NO 101 of 2016

Our Ref: **TM/PYD/ 0083/97/002**

Malta Transport Centre
Marsa, MRS 1917
Malta

Tel: (356) 2122 2203
Fax: (356) 2125 0365
Email: info.tm@transport.gov.mt

www.transport.gov.mt

15 November 2016

Beneteau Sailing Regatta – Northeast of Malta

The Ports and Yachting Directorate, Transport Malta would like to notify mariners that sailing regatta races will be held between Friday 18th November 2016 and Sunday 20th November 2016 as listed below.

On Friday 18th November 2016, a passage race will be from point A to point B (as shown on attached chart). The race will start at 1330 hours and will be finished by 1930 hours.

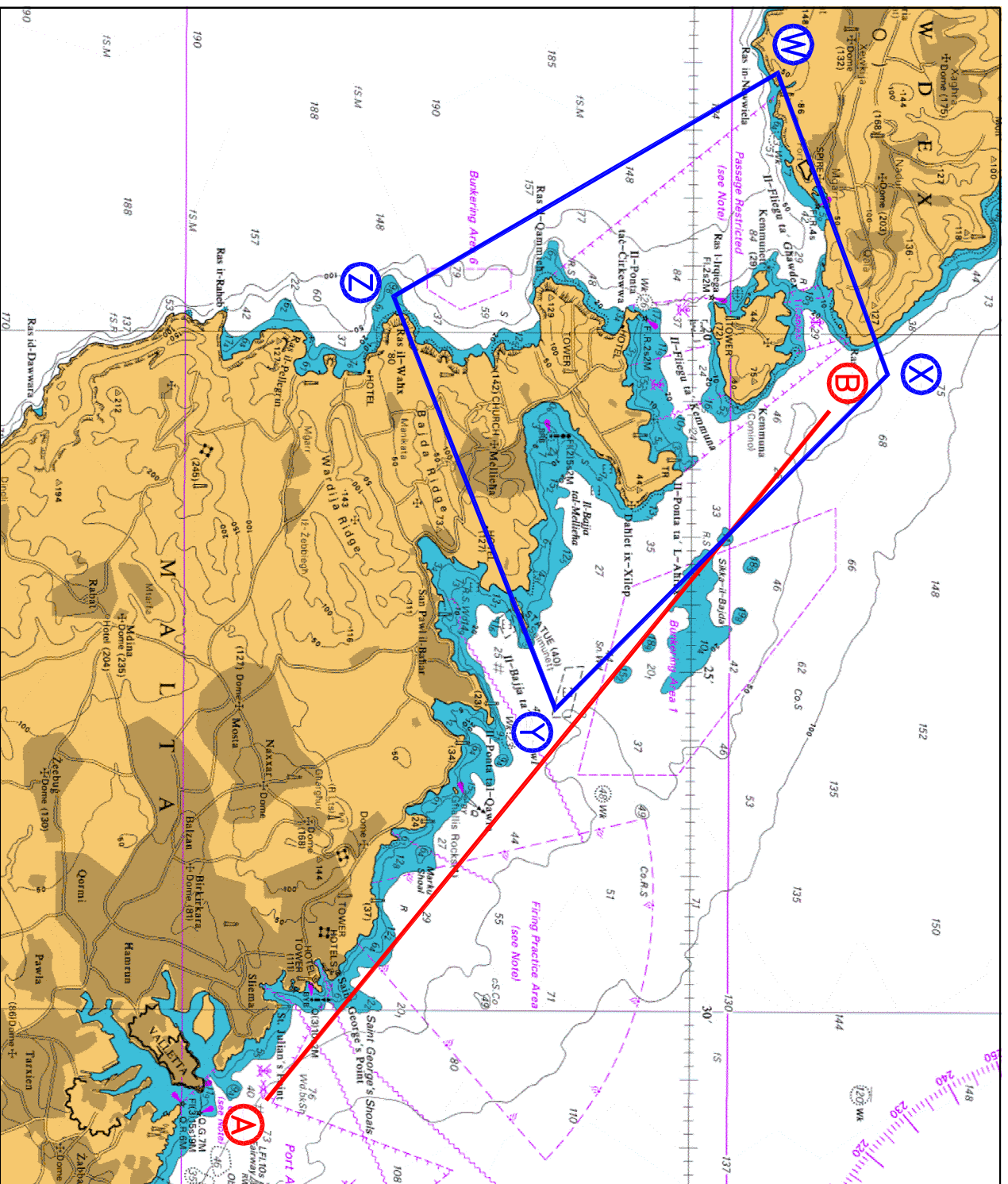
On Saturday 19th November 2016, 2 (two) coastal races will be held back to back within the area bounded by the points W, X, Y and Z (as shown on attached chart). The start and finish point will be at one of the following places depending on the weather conditions:

St. Paul's Bay or Gnejna in Malta or Qala or Mgarr ix-Xini in Gozo. The races will start at 1000 hours and will be finished by 1830 hours.

On Sunday 20th November 2016, a passage race will be from point B to point A (as shown on attached chart). The race will start at 1000 hours and will be finished by 1700 hours.

Masters of all vessels not directly involved in this sailing event are asked to keep clear of the area, and observe any instructions that may be given by the event organisers safety vessels and by Valletta Port Control (Valletta VTS) on channel 12.

Charts effected: BA 211A, 2537, 2538, 194



©British Crown Copyright 1970, 1983, 1986, 1988, 1999, 2000.
All rights reserved

The UK Hydrographic Office makes the accompanying data available to Malta Maritime Authority under the terms and conditions of agreement HD 1427/020930/01.

DISCLAIMER

Whilst the UK Hydrographic Office has endeavoured to ensure that the material supplied is suitable for the purposes described, it accepts no liability (to the maximum extent permitted by law) for any damage or loss of any nature arising from its use. The material supplied is used entirely at the Recipient's own risk.