



PORTS AND YACHTING DIRECTORATE

## LOCAL NOTICE TO MARINERS NO 86 of 2016

Our Ref: TM/PYD/87/93/003

12 October 2016



Transport Malta

Malta Transport Centre  
Marsa, MRS 1917  
Malta

Tel: (356) 2122 2203  
Fax: (356) 2125 0365  
Email: [info.tm@transport.gov.mt](mailto:info.tm@transport.gov.mt)

[www.transport.gov.mt](http://www.transport.gov.mt)

### **Fireworks display from Pontoons moored at the Entrance of French Creek – Grand Harbour**

The Ports and Yachting Directorate, Transport Malta, notifies mariners that a fireworks display will be held on **Sunday 23 October 2016 at 2130 hours and will last about 5 minutes**. The display will be let off from 3 pontoons which will be moored centered on the below position at 2030 hours and removed at about 2145 hours as shown on attached chart.

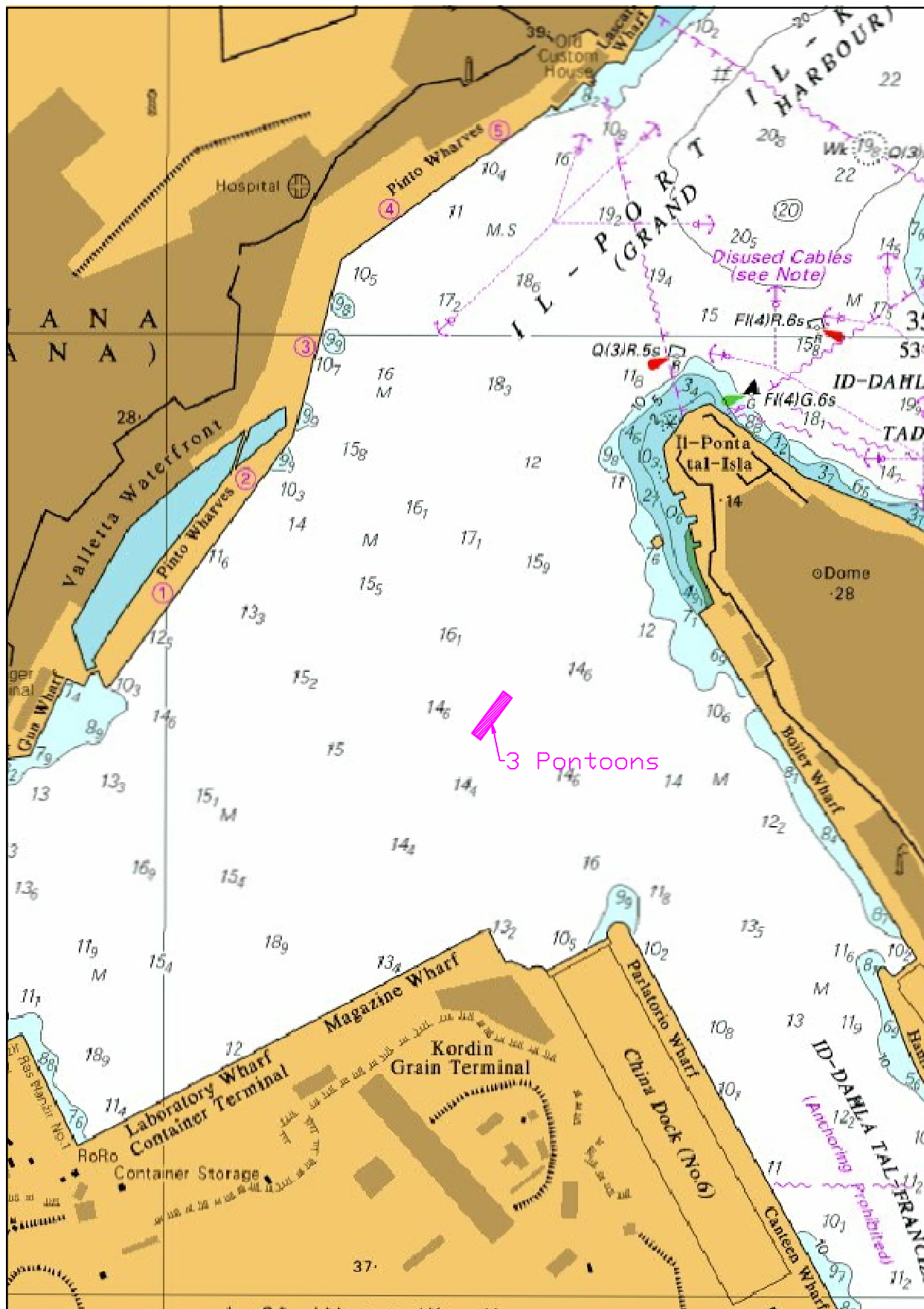
	<b>LATITUDE (N)</b>	<b>LONGITUDE (E)</b>
<b>Center Point</b>	<b>35°53'.303</b>	<b>014°30'.711</b>

A wide berth of 150 meters is requested from the barge. Vessels navigating in Grand Harbour are to proceed with caution and slow speed. Mariners are to comply with any instructions given by Valletta Port Control (Valletta VTS) on VHF Channel 12.

The Ports and Yachting Directorate, Transport Malta, will not be held responsible or liable in any manner whatsoever for any damages or expenses incurred by any person as a consequence of these fireworks' displays, including for failing to abide and comply with the above directions.

Chart affected BA Chart 177.

Positions are referred to WGS 84 Datum.



©British Crown Copyright 1970, 1983, 1986, 1988, 1999, 2000.  
All rights reserved

The UK Hydrographic Office makes the accompanying data  
available to Transport Malta under the terms and  
conditions of agreement HD 1427/020930/01.

#### DISCLAIMER

Whilst the UK Hydrographic Office has endeavoured to ensure  
that the material supplied is suitable for the purpose described,  
it accepts no liability (to the maximum extent permitted by law)  
for any damage or loss of any nature arising from its use.  
The material supplied is used entirely at the Recipient's own risk.