



PORTS AND YACHTING DIRECTORATE

Transport Malta

Malta Transport Centre  
Marsa, MRS 1917  
Malta

Tel: (356) 2122 2203  
Fax: (356) 2125 0365  
Email: [info.tm@transport.gov.mt](mailto:info.tm@transport.gov.mt)

[www.transport.gov.mt](http://www.transport.gov.mt)

## LOCAL NOTICE TO MARINERS NO 85 of 2016

Our Ref: TM/PYD/63/95

12 October 2016

### Survey at Inner Grand Harbour.

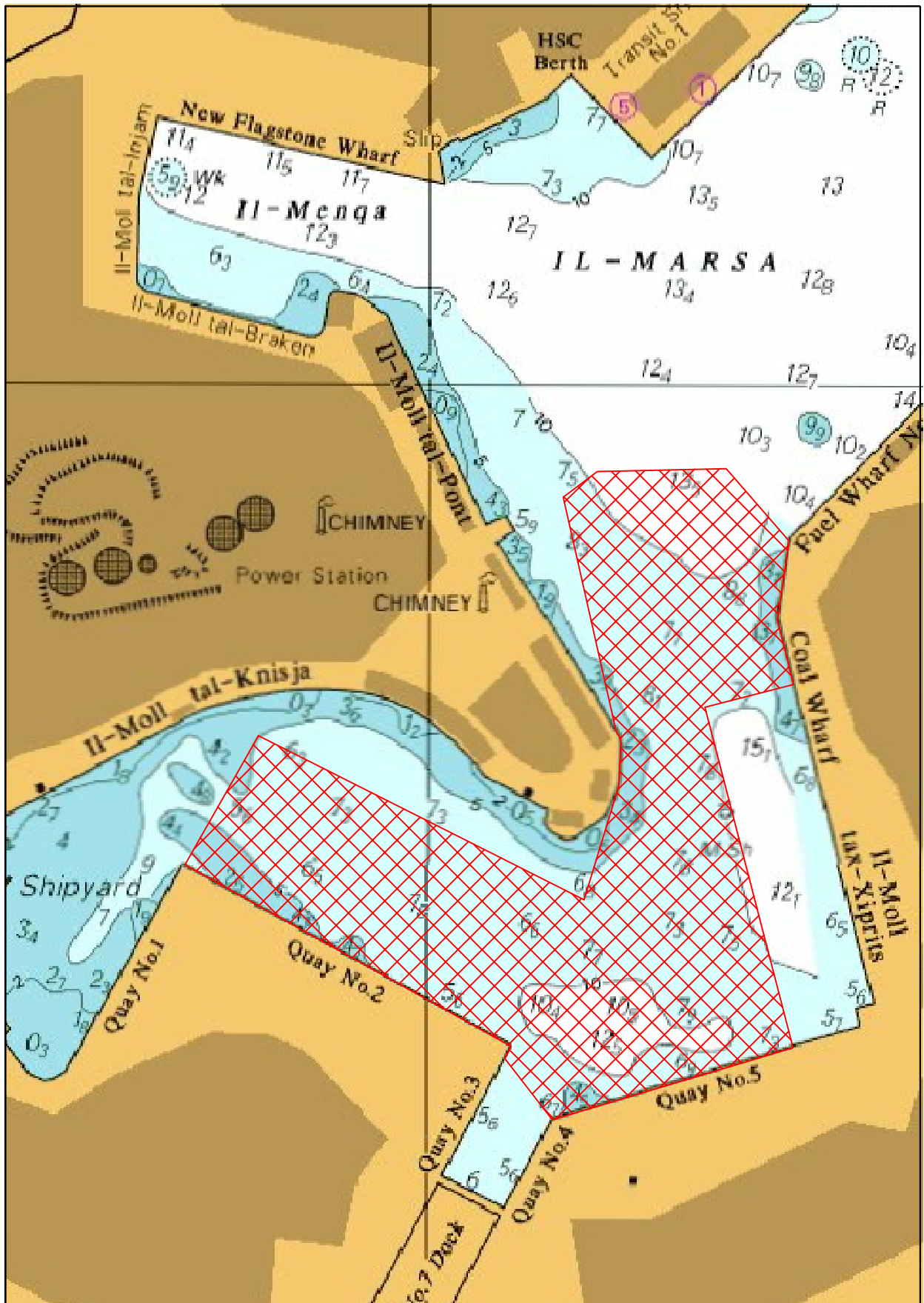
The Ports and Yachting Directorate, Transport Malta, notifies mariners and owners of vessels, that a Survey is going to be carried out at the Inner Grand Harbour in the area shown hatched in red on the attached Chart.

The Survey will start on **Tuesday 18<sup>th</sup> October 2016** and is expected to be completed by **Friday 21<sup>st</sup> October 2016**. The survey will be carried out using the vessel **Wilfred**.

Owners of vessels that are berthed within the area are to remove these vessels by **Monday 17<sup>th</sup> October 2016**. Port Operations are to be contacted for further information and alternative berthing arrangements.

Instructions issued by Port Operations, Valletta Port Control (Valletta VTS) and Transport Malta Officials are to be complied with.

Chart affected BA 177



©British Crown Copyright 1970, 1983, 1986, 1988, 1999, 2000.  
All rights reserved

The UK Hydrographic Office makes the accompanying data available to Transport Malta under the terms and conditions of agreement HD 1427/020930/01.

**DISCLAIMER**

Whilst the UK Hydrographic Office has endeavoured to ensure that the material supplied is suitable for the purpose described, it accepts no liability (to the maximum extent permitted by law) for any damage or loss of any nature arising from its use. The material supplied is used entirely at the Recipient's own risk.