



PORTS AND YACHTING DIRECTORATE

Transport Malta

LOCAL NOTICE TO MARINERS NO 82 of 2016

Our Ref: TM/PYD/132/89

7 October 2016

Malta Transport Centre
Marsa, MRS 1917
Malta

Tel: (356) 2122 2203
Fax: (356) 2125 0365
Email: info.tm@transport.gov.mt

www.transport.gov.mt

Filming in Different Localities in Malta and Gozo

The Ports and Yachting Directorate, Transport Malta, notifies all mariners and sea vessel operators that filming activities will take place in different locations around Malta and Gozo.

The date, times and areas are as follows:

Friday 14 October 2016 to Friday 2 December 2016

Clear horizon off Ras in-Niexfa Bay from 0700 hrs to 1900 hrs, shown as point A on attached chart 1.

Tuesday 15 November 2016 to Friday 18 November 2016

Wide berth at Gozo Marina from 0700 hrs to 1900 hrs.

Friday 25 November 2016 to Saturday 26 November 2016

Wide berth at Ta' Xbiex and Msida Creek Marina from 0500 hrs to 1700 hrs.

Sunday 27 November 2016

- 1 Wide berth at Birzebbugia Bay from 0700 hrs to 1200 hrs, shown as point W on attached chart 2.
- 2 Wide berth at Hurd Bank from 1200 hrs to 1900 hrs, shown as point Z on attached chart 2.
- 3 Wide berth en-route from Birzebbugia Bay to Hurd Bank.

In case of bad weather during the above mentioned days, filming will be carried out in any of the following localities and a clear horizon is requested

Off ir-Ramla tac-Cirkewwa, shown as B on attached chart 1.

Off Ras in-Newwiela, shown as C on attached chart 1.

Off Ras il-Qala, shown as D on attached chart 1.

Off Dahlet ix-Xilep, shown as E on attached chart 1.

Off Il-Bajja tal-Mellieha, shown as F on attached chart 1.



Mariners are requested to keep a sharp look out when sailing in the vicinity of the above areas.

Mariners and vessel operators are to keep watch on VHF Channel 12 and cooperate with the enforcement officers in the area. They are to comply with instructions issued by Valletta Port Control (Valletta VTS).

Charts affected: BA 2537, 2538, 177, 211A and 211D.

©British Crown Copyright 1970, 1983, 1986, 1988, 1999, 2000.
All rights reserved

The UK Hydrographic Office makes the accompanying data available to Transport Malta under the terms and conditions of agreement HD 1427/020930/01

DISCLAIMER

Whilst the UK Hydrographic Office has endeavoured to ensure that the material supplied is suitable for the purposes described, it accepts no liability (to the maximum extent permitted by law) for any damage or loss of any nature arising from its use. The material supplied is used entirely at the Recipient's own risk.

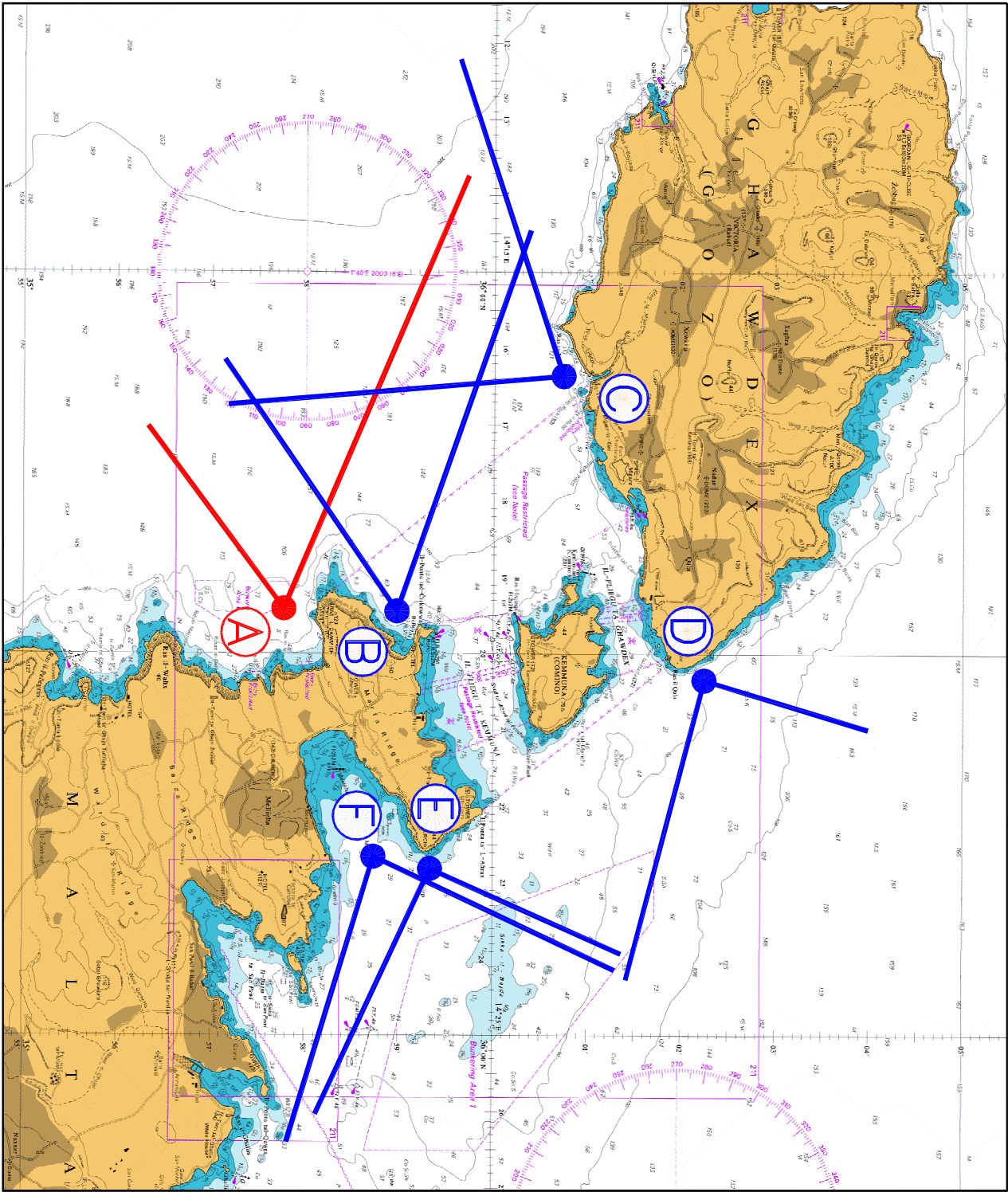


Chart 1

©British Crown Copyright 1970, 1983, 1986, 1988, 1999, 2000.
All rights reserved

The UK Hydrographic Office makes the accompanying data available to Transport Malta under the terms and conditions of agreement HD 1427/020930/01

DISCLAIMER

Whilst the UK Hydrographic Office has endeavoured to ensure that the material supplied is suitable for the purposes permitted by law, it accepts no liability (to the maximum extent permitted by law) for any damage or loss of any nature arising from its use. The material supplied is used entirely at the Recipient's own risk.

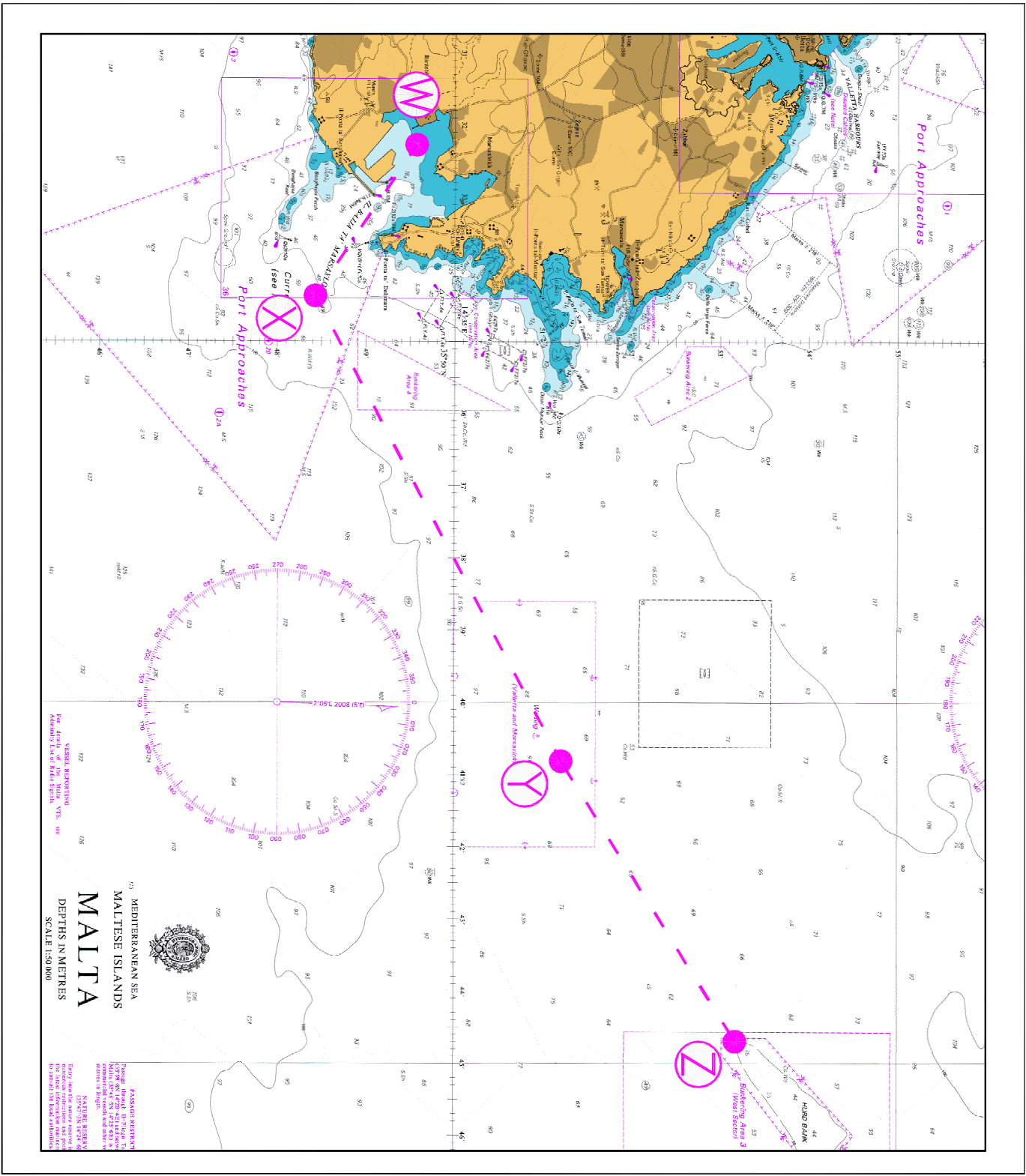


Chart 2