



Transport Malta

PORTS AND YACHTING DIRECTORATE

## LOCAL NOTICE TO MARINERS NO 66 of 2016

Our Ref: TM/PYD/131/92

30 August 2016

Malta Transport Centre  
Marsa, MRS 1917  
Malta

Tel: (356) 2122 2203  
Fax: (356) 2125 0365  
Email: [info.tm@transport.gov.mt](mailto:info.tm@transport.gov.mt)

[www.transport.gov.mt](http://www.transport.gov.mt)

### Malta Air Show - 2016 Maritime Exclusion Zones between 22 and 26 September 2016

The Ports and Yachting Directorate, Transport Malta notifies all mariners that the Malta Air Show - 2016 will be held between Friday 23 September 2016 and Sunday 25 September 2016.

The Ports and Yachting Directorate, Transport Malta notifies that a Maritime Exclusion Zones (MEZ) will be established between Thursday 22 September 2016 and Monday 26 September 2016.

The MEZ is delineated by the imaginary lines between the points **A, B, C, D, E, F, G, H** and **I** and the coastline, shown hatched in red on attached chart. Flashing markers, with yellow/red flags, will be placed in positions **B, C, D, E, F, G** and **H**.

Point	Latitude (N)	Longitude (E)	
A	35° 53'.854	014° 31'.796	Coast
B	35° 54'.045	014° 31'.967	Flashing Markers
C	35° 54'.231	014° 32'.136	Flashing Markers
D	35° 54'.011	014° 32'.491	Flashing Markers
E	35° 53'.784	014° 32'.861	Flashing Markers
F	35° 53'.554	014° 33'.236	Flashing Markers
G	35° 53'.320	014° 33'.617	Flashing Markers
H	35° 53'.176	014° 33'.479	Flashing Markers
I	35° 53'.032	014° 33'.339	Coast

The dates and timings of the air shows are as follows;

Friday 23 September 2016:	from 1500 hrs to 2030 hrs local time.
Saturday 24 September 2016:	from 1530 hrs to 2030 hrs local time.
Sunday 25 September 2016:	from 1530 hrs to 2030 hrs local time.

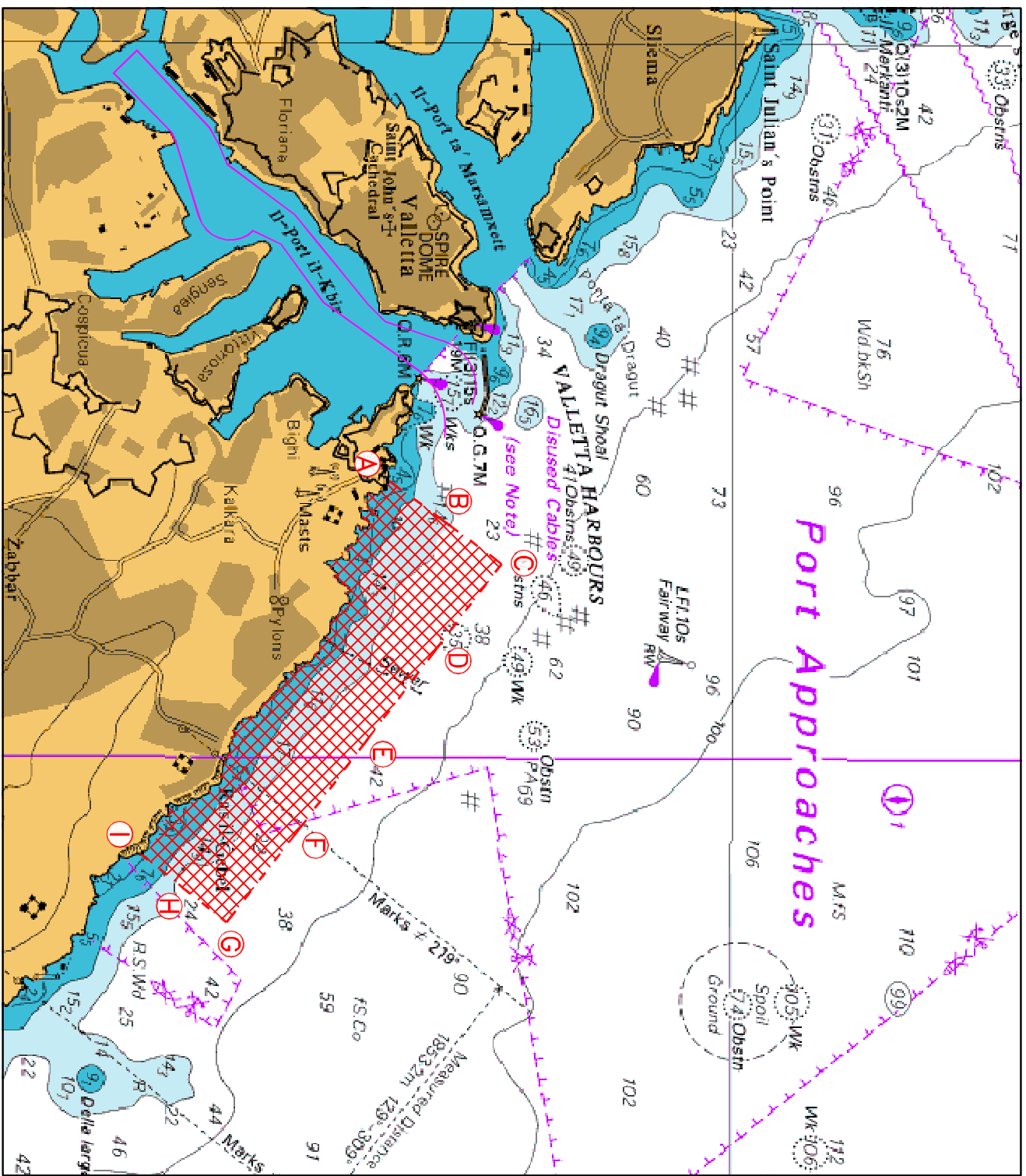
Mariners are informed that during the above display dates, entry and exit from the Grand Harbour will be restricted to navigation from 1500 hrs to 2030 hrs local time.

Mariners are instructed to comply with any instructions given by Valletta Port Control (Valletta VTS), The Armed Forces of Malta patrol vessels, Transport Malta enforcement vessels and Administrative Law Enforcement vessels operating in the areas.

Part of BA chart 194 attached

Charts affected: BA 177, 194, 211, 2537, 2538

All positions are referred to WGS 84 DATUM.



©British Crown Copyright 1970, 1983, 1986, 1988, 1999, 2000.  
 All rights reserved  
 The UK Hydrographic Office makes the accompanying data available to Transport Malta under the terms and conditions of agreement HD 1427/080930/01  
**DISCLAIMER**  
 While the UK Hydrographic Office has endeavoured to ensure that the material supplied is suitable for the purposes described, it accepts no liability for the maximum extent permitted by law for any damage or loss of any nature arising from its use.  
 The material supplied is used entirely at the Recipient's own risk.