



PORTS AND YACHTING DIRECTORATE

Transport Malta

LOCAL NOTICE TO MARINERS NO 63 of 2016

Our Ref: TM/PYD/26/95/7

18 August 2016

Malta Transport Centre
Marsa, MRS 1917
Malta

Tel: (356) 2122 2203
Fax: (356) 2125 0365
Email: info.tm@transport.gov.mt

www.transport.gov.mt

Firework Displays in Grand Harbour

The Ports and Yachting Directorate, Transport Malta, notifies that firework displays will be let off from 3 barges next to each other moored 200m off Bighi Point on the following dates and times:-

Barges:

Sunday 4 September 2016	From 0800 hrs till 0815 hrs, from 1200 hrs till 1215 hrs and from 2040 hrs till 2110 hrs.
Monday 5 September 2016	From 0800 hrs till 0815 hrs, from 1200 hrs till 1215 hrs and from 2000 hrs till 2030 hrs.
Tuesday 6 September 2016	From 0800 hrs till 0820 hrs, from 1200 hrs till 1220 hrs, from 1930 hrs till 2000 hrs and from 2215 hrs till 2300 hrs.
Wednesday 7 September 2016	From 0800 hrs till 0820 hrs, from 1200 hrs till 1220 hrs, from 1900 hrs till 2000 hrs and from 2130 hrs till 2300 hrs
Thursday 8 September 2016	From 0800 hrs till 0820 hrs, from 1100 hrs till 1125 hrs, from 1200 hrs till 1220 hrs and from 1900 hrs till 2200 hrs.

Barges Position:

The barges to be used for the fireworks displays will display the signals in accordance with the Collisions Regulations (anchor ball during the day and all round white light at night) and shall be moored on Friday 2 September, 2016 in the following position:

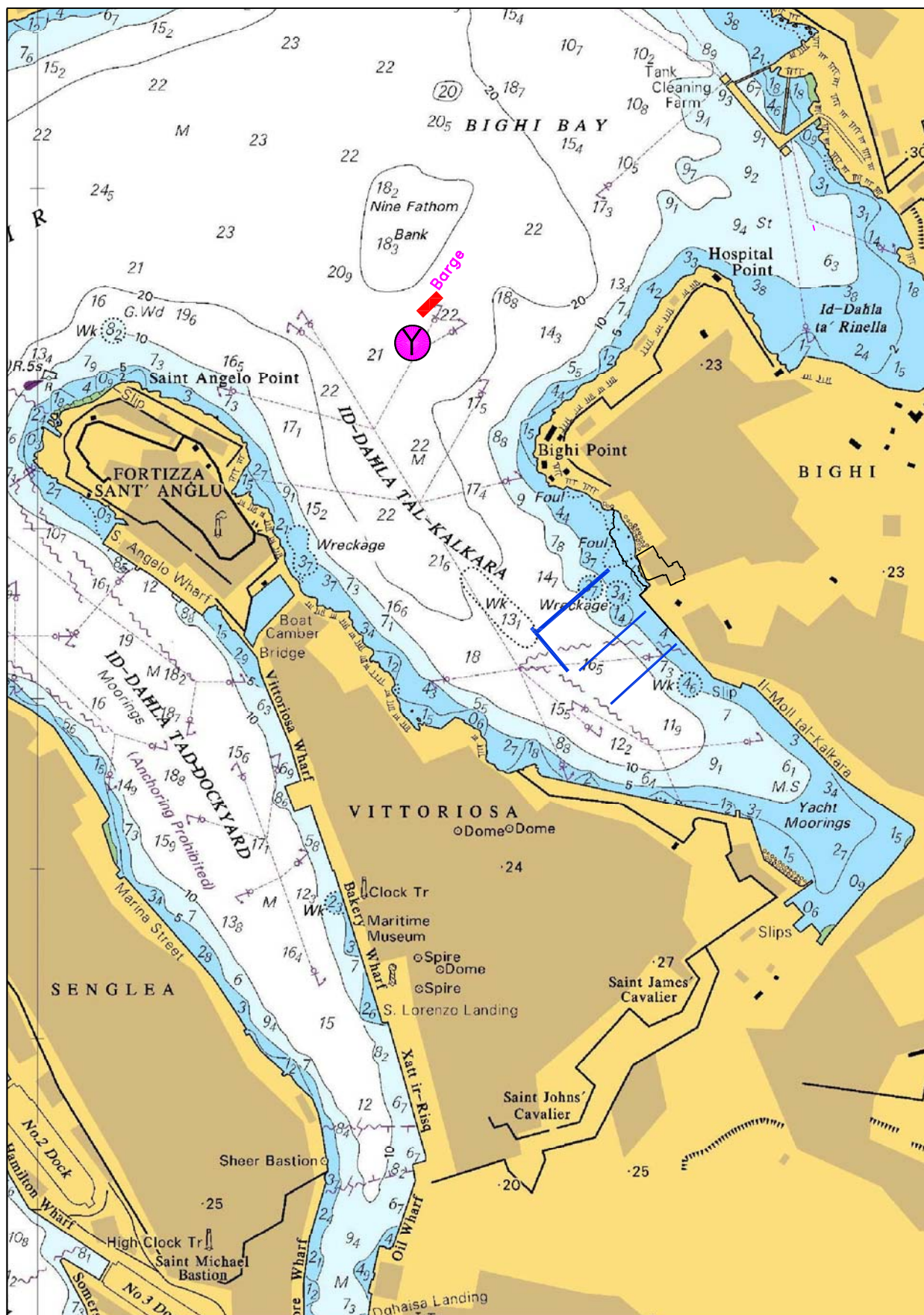
	LATITUDE (N)	LONGITUDE (E)
Y	35°53'.632	14°31'.281

The barges will be removed on Friday 9 September 2016.

A wide berth of 200 meters is requested from the position of the barge on the days and times indicated above. Mariners are to navigate with caution and slow speed and give a wide berth even outside the display times as the barges will be loaded with the Fireworks. Instructions and directions given by Valletta Port Control (Valletta VTS) are to be complied with.

Chart affected BA Chart 177.

Positions are referred to WGS 84 Datum.



©British Crown Copyright 1970, 1983, 1986, 1988, 1999, 2000.
All rights reserved

The UK Hydrographic Office makes the accompanying data
available to Transport Malta under the terms and
conditions of agreement HD 1427/020930/01.

DISCLAIMER

Whilst the UK Hydrographic Office has endeavoured to ensure
that the material supplied is suitable for the purpose described,
it accepts no liability (to the maximum extent permitted by law)
for any damage or loss of any nature arising from its use.
The material supplied is used entirely at the Recipient's own risk.