



PORTS AND YACHTING DIRECTORATE

Transport Malta

LOCAL NOTICE TO MARINERS NO 59 of 2016

Our Ref: TM/PYD/26/95

11 August 2016

Malta Transport Centre
Marsa, MRS 1917
Malta

Tel: (356) 2122 2203
Fax: (356) 2125 0365
Email: info.tm@transport.gov.mt

www.transport.gov.mt

Fireworks Display from Manoel Island in Sliema Creek, Marsamxett Harbour

The Ports and Yachting Directorate, Transport Malta notifies Mariners that fireworks will be let off from the foreshore of Manoel Island in Sliema Creek, centered in Position:

Latitude (N)	Longitude (E)
35° 54'.319	14° 30'.321

This position is shown on the attached chart as point A.

The fireworks displays will take place on the following dates and times

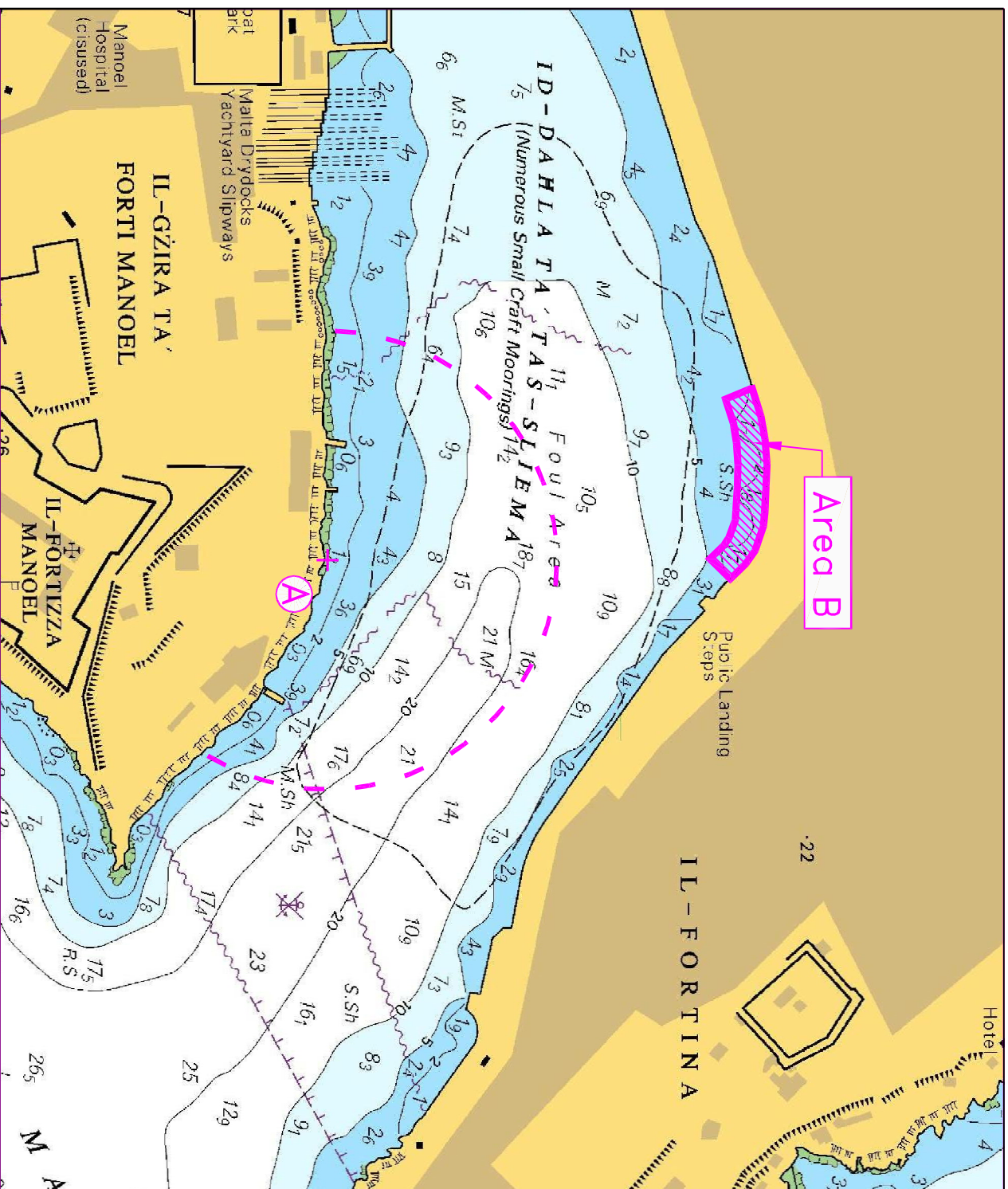
Tuesday, 16 August 2016	From 0900 hours till 0910 hours, from 1200 hours till 1210 hours, and From 1915 hours till 2000 hours;
Friday, 19 August 2016	From 0900 hours till 0910 hours, from 1200 hours till 1210 hours, and from 2215 hours till 2300 hours;
Saturday, 20 August 2016	from 0900 hours till 0930 hours, from 1200 hours till 1220 hours, from 1800 hours till 1900 hours and from 2130 hours till 2330 hours;
Sunday, 21 August 2016	from 0900 hours till 0910 hours, from 1200 hours till 1210 hours, from 1930 hours till 2030 and from 2100 hours till 2300 hours;

In view of the above, mariners are informed that navigation within 200 meters from the above position in Marsamxett Harbour will be prohibited during the time of fireworks. All craft moored within the indicated area (as shown on attached chart) are to be removed on the above-mentioned dates and times of the fireworks displays.

Further to the above, ground fireworks will be held at the Strand, Sliema on Saturday 20 August 2016 between 2300 hours and 2400 hours. Vessels in the vicinity and within 20 meters off these ground fireworks, shown as Area B on attached chart, are to be removed.

Mariners are to obey directives issued by the Valletta Port Control (Valletta VTS), and by Police in the area.

Chart Affected: BA 177



©British Crown Copyright 1970, 1983, 1986, 1988, 1989, 1999, 2000.
All rights reserved

The UK Hydrographic Office makes the accompanying data available to Transport Malta under the terms and conditions of agreement HD 1427/020930/01.

DISCLAIMER

Whilst the UK Hydrographic Office has endeavoured to ensure that the material supplied is suitable for the purpose described, it accepts no liability (to the maximum extent permitted by law) for any damage or loss of any nature arising from its use. The material supplied is used entirely at the Recipient's own risk.