



PORTS AND YACHTING DIRECTORATE

Transport Malta

## LOCAL NOTICE TO MARINERS No 51 of 2016

Our Ref: TM/PYD/26/94/1

19 July 2016

Malta Transport Centre  
Marsa, MRS 1917  
Malta

Tel: (356) 2122 2203  
Fax: (356) 2125 0365  
Email: [info.tm@transport.gov.mt](mailto:info.tm@transport.gov.mt)

[www.transport.gov.mt](http://www.transport.gov.mt)

### Firework Displays in Grand Harbour

The Ports and Yachting Directorate, Transport Malta, notifies that firework displays will be let off from Bighi shore (as shown on attached chart) and also from barges moored off Bighi Point on the following dates and times:-

#### From Bighi shore:

Sunday 31 July 2016 from 0800 hrs till 0830 hrs, from 1200 hrs till 1230 hrs and from 2030 hrs till 2100 hrs.

#### From Barges:

Saturday 6 August 2016 from 0800 hrs till 0815 hrs, from 1200 hrs till 1215 hrs and from 2000 hrs till 2015 hrs.

Sunday 7 August 2016 from 0800 hrs till 0815 hrs, from 1200 hrs till 1230 hrs and from 2030 hrs till 2130 hrs.

Monday 8 August 2016 from 0800 hrs till 0815 hrs, from 1200 hrs till 1300 hrs and from 2045 hrs till 2245 hrs.

Tuesday 9 August 2016 from 0930 hrs till 1030 hrs, from 1200 hrs till 1230 hrs, from 1900 hrs till 2100 hrs and from 2200 hrs till 2400 hrs.

Wednesday 10 August 2016 from 0800 hrs till 0900 hrs, from 1200 hrs till 1300 hrs, from 1915 hrs till 2400 hrs.

#### Barges position:

The barges shall be moored on Friday 5 August, 2016 in the following positions:

	LATITUDE (N)	LONGITUDE (E)
Y	35°53'.614	14°31'.256
Z	35°53'.668	14°31'.207



**Transport Malta**

Malta Transport Centre  
Marsa, MRS 1917  
Malta

Tel: (356) 2122 2203  
Fax: (356) 2125 0365  
Email: [info.tm@transport.gov.mt](mailto:info.tm@transport.gov.mt)

[www.transport.gov.mt](http://www.transport.gov.mt)

The barges will be removed on Thursday 11<sup>th</sup> August 2015.

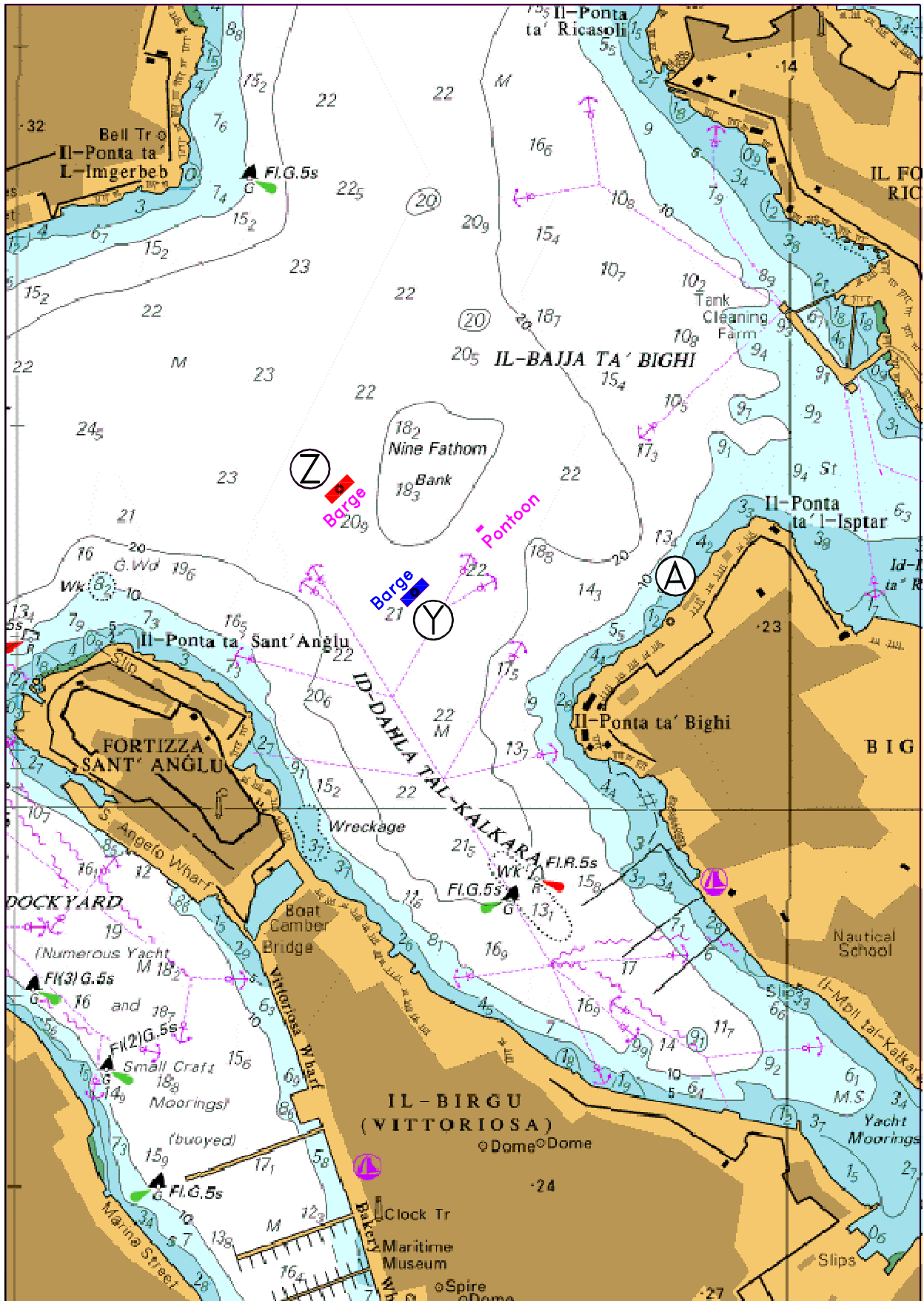
A wide berth of 200 meters is requested from Bigli Shore and from the position of the barges on the days indicated above as the barges will be loaded with fireworks.

Transport Malta will accept no Liabilities whatsoever for any vessels that are within the 200m distance during the above mentioned dates and times.

Mariners are to navigate with caution and slow speed. Instructions and directions given by Valletta Port Control (Valletta VTS) are to be complied with.

Chart affected BA Chart 177.

Positions are referred to WGS 84 Datum.



©British Crown Copyright 1970, 1983, 1986, 1988, 1999, 2000.  
All rights reserved

The UK Hydrographic Office makes the accompanying data available to Transport Malta under the terms and conditions of agreement HD 1427/020930/01.

**DISCLAIMER**

Whilst the UK Hydrographic Office has endeavoured to ensure that the material supplied is suitable for the purpose described, it accepts no liability (to the maximum extent permitted by law) for any damage or loss of any nature arising from its use. The material supplied is used entirely at the Recipient's own risk.