



PORTS AND YACHTING DIRECTORATE

**Transport Malta**

## LOCAL NOTICE TO MARINERS NO 38 of 2016

Our Ref: TM/PYD/26/95/1

Malta Transport Centre  
Marsa, MRS 1917  
Malta

Tel: (356) 2122 2203  
Fax: (356) 2125 0365  
Email: [info.tm@transport.gov.mt](mailto:info.tm@transport.gov.mt)

04 July 2016

[www.transport.gov.mt](http://www.transport.gov.mt)

### Fireworks Display from Rinella Bay and Kalkara Creek – Grand Harbour

The Ports and Yachting Directorate, Transport Malta notifies mariners that fireworks will be let off from Rinella Bay and Kalkara Creek (Points A and B as shown on attached chart) on the dates and times as follows:

In Kalkara Creek from the area known as "tax-Xewkija (point A) :

|                       |                                 |
|-----------------------|---------------------------------|
| Thursday 14 July 2016 | From 2000 hours till 0000 hours |
| Friday 15 July 2016   | From 2200 hours till 0000 hours |
| Saturday 16 July 2016 | From 2200 hours till 2300 hours |
| Sunday 17 July 2016   | From 1900 hours till 0000 hours |

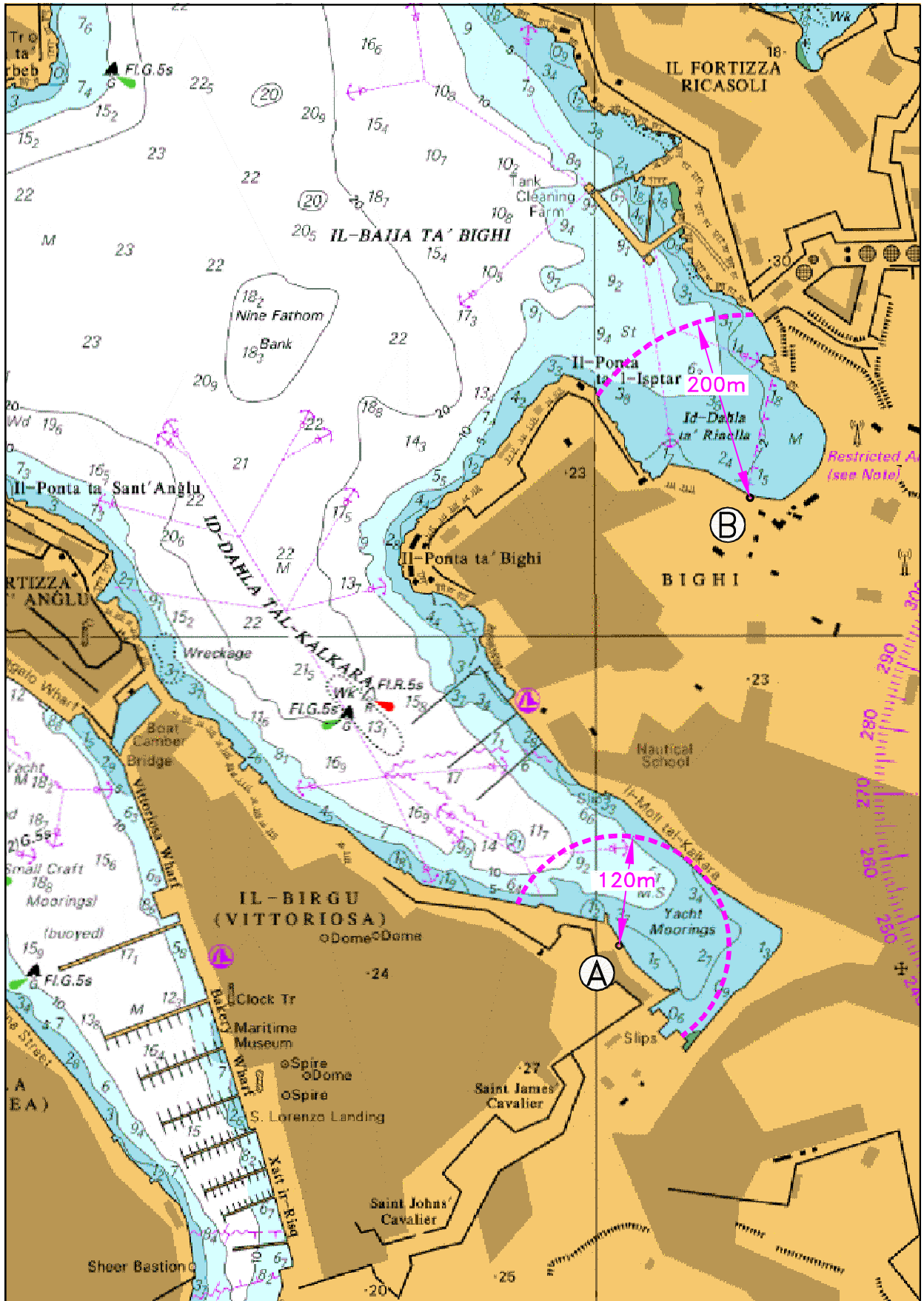
In Rinella Bay Kalkara (point B):

|                        |                                                                                                      |
|------------------------|------------------------------------------------------------------------------------------------------|
| Wednesday 13 July 2016 | From 0800 hours till 0830 hours, from 1200 hours till 1230 hours, from 2130 hours till 2330 hours    |
| Friday 15 July 2016    | From 0800 hours till 0830 hours, from 1200 hours till 1230 hours and from 2200 hours till 0000 hours |

In view of the above, mariners are informed to give a wide berth of 200 meters from Rinella Bay, Kalkara (as shown on attached chart point B). All Vessels within 120 meters radius from the area known as tax-Xewkija in Kalkara Creek (as shown on attached chart point A) are to be removed on the above-mentioned dates and times of the displays.

Mariners are to obey directives issued by the Valletta Port Control (Valletta VTS), and by Police in the area.

Chart Affected: BA 177



©British Crown Copyright 1970, 1983, 1986, 1988, 1999, 2000.  
All rights reserved

The UK Hydrographic Office makes the accompanying data available to Transport Malta under the terms and conditions of agreement HD 1427/020930/0L.

**DISCLAIMER**

Whilst the UK Hydrographic Office has endeavoured to ensure that the material supplied is suitable for the purpose described, it accepts no liability (to the maximum extent permitted by law) for any damage or loss of any nature arising from its use. The material supplied is used entirely at the Recipient's own risk.