



PORTS AND YACHTING DIRECTORATE

Transport Malta

LOCAL NOTICE TO MARINERS NO 36 of 2016

Our Ref: TM/PYD/132/89

30 June 2016

Malta Transport Centre
Marsa, MRS 1917
Malta

Tel: (356) 2122 2203
Fax: (356) 2125 0365
Email: info.tm@transport.gov.mt

www.transport.gov.mt

Filming in Different Localities in Gozo and Comino

The Ports and Yachting Directorate, Transport Malta, notifies all mariners and sea vessel operators that filming activities will take place in different locations around Gozo and Comino.

The date, times and areas are as follows:

Monday 4 July 2016

- 1 Clear horizon at tac-Cawl in Gozo from 1100 hrs to 2300 hrs area shown in red on attached chart A.
- 2 Clear horizon and no vessels at Santa Marija Bay / Caves in Comino from 1100 hrs to 2300 hrs, area shown in black on attached chart A.

Saturday 16 July 2016 and Sunday 17 July 2016

- 3 Clear horizon at Qbajjar in Gozo from 1000 hrs to 2300 hrs, area shown in red on attached chart B .

Tuesday 19 July 2016

- 4 Entry prohibited at Wied il-Ghasri in Gozo from 0700 hrs to 1600 hrs area shown in black on attached chart C.
- 5 Clear horizon at Qolla il-Bajba in Gozo from 0700 hrs to 1600 hrs, area shown in red on attached chart C.

Wednesday 20 July 2016

- 6 Clear horizon and no vessels from the small cove West of Hondoq ir-Rummien in Gozo from 1000 hrs to 2400 hrs area shown in black on attached chart D.
- 7 Clear horizon at l'Ghadajjar in Qala Gozo from 1000 hrs to 2400 hrs, area shown in red on attached chart D.



In view of the above mariners navigating in the indicated areas during filming are requested to give a wide berth, keep watch on VHF Channel 12 and cooperate with the crew and A.L.E. in the area. They are to comply with instructions issued by VTS (Valletta Port Control).

Charts affected: BA 2537 and 211A.

The UK Hydrographic Office makes the accompanying data available to Transport Malta under the terms and conditions of agreement HD 1427/020930/01.

Whilst the UK Hydrographic Office has endeavoured to ensure that the material supplied is suitable for the purpose described, it accepts no liability (to the maximum extent permitted by law) for any damage or loss of any nature arising from its use. The material supplied is used entirely at the Recipient's own risk.



British Crown Copyright 1970, 1983, 1986, 1988, 1999, 2000.
All rights reserved

The UK Hydrographic Office makes the accompanying data available to Transport Malta under the terms and conditions of agreement HD 1427/020930/01.

DISCLAIMER

Whilst the UK Hydrographic Office has endeavoured to ensure that the material supplied is suitable for the purposes described, it accepts no liability (to the maximum extent permitted by law) for any damage or loss of any nature arising from its use. The material supplied is used entirely at the Recipient's own risk.

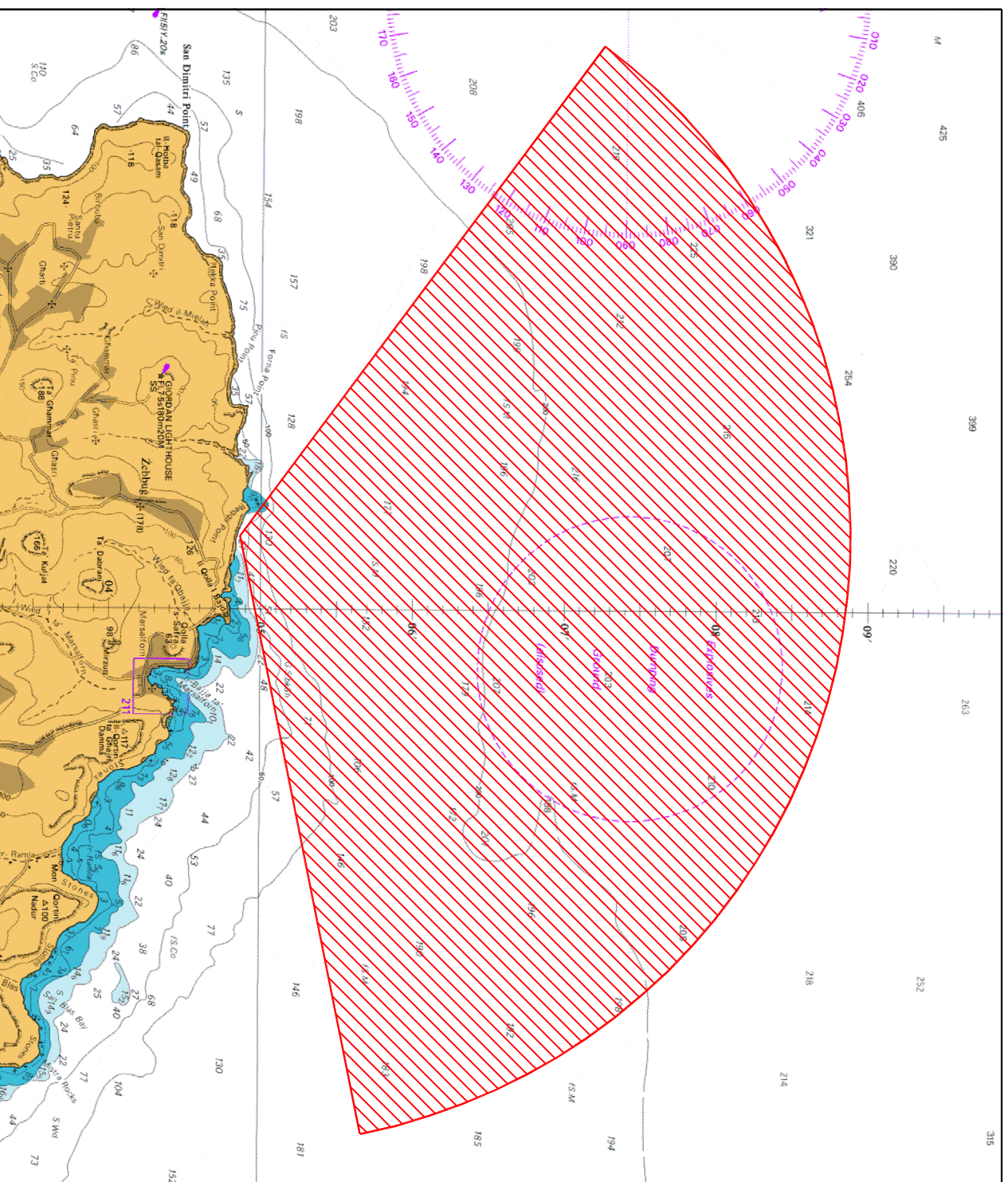


Chart B

British Crown Copyright 1970, 1983, 1986, 1988, 1999, 2000.
All rights reserved

The UK Hydrographic Office makes the accompanying data available to Transport Malta under the terms and conditions of agreement HD 1427/020930/01.

DISCLAIMER

Whilst the UK Hydrographic Office has endeavoured to ensure that the material supplied is suitable for the purpose described, it accepts no liability (to the maximum extent permitted by law) for any damage or loss of any nature arising from its use. The material supplied is used entirely at the Recipient's own risk.

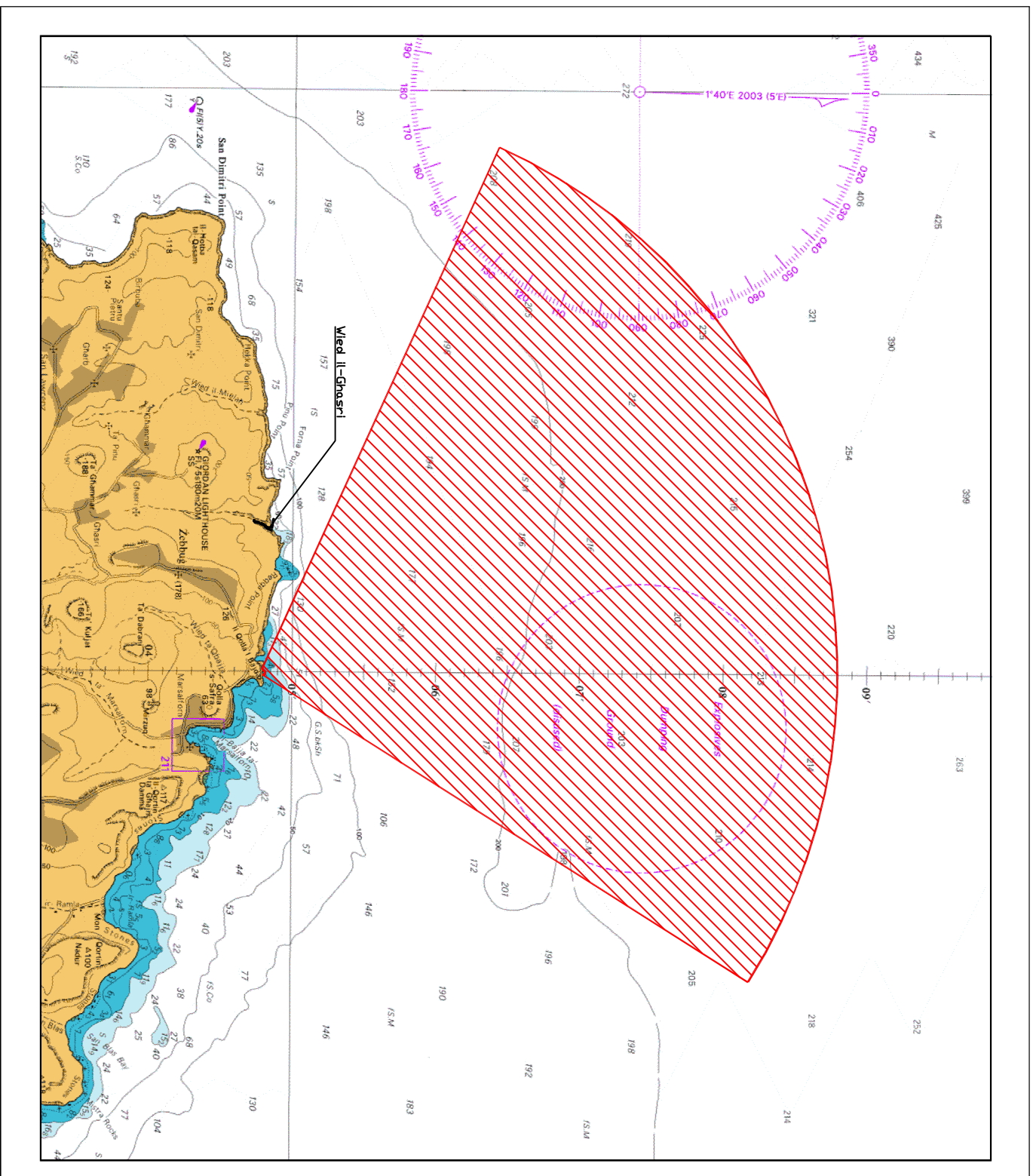


Chart C

British Crown Copyright 1970, 1983, 1986, 1988, 1989, 1999, 2000.
All rights reserved

The UK Hydrographic Office makes the accompanying data available to Transport Malta under the terms and conditions of agreement HD 1427/020930/01.

DISCLAIMER

Whilst the UK Hydrographic Office has endeavoured to ensure that the material supplied is suitable for the purpose described, it accepts no liability (to the maximum extent permitted by law) for any damage or loss of any nature arising from its use. The material supplied is used entirely at the Recipient's own risk.

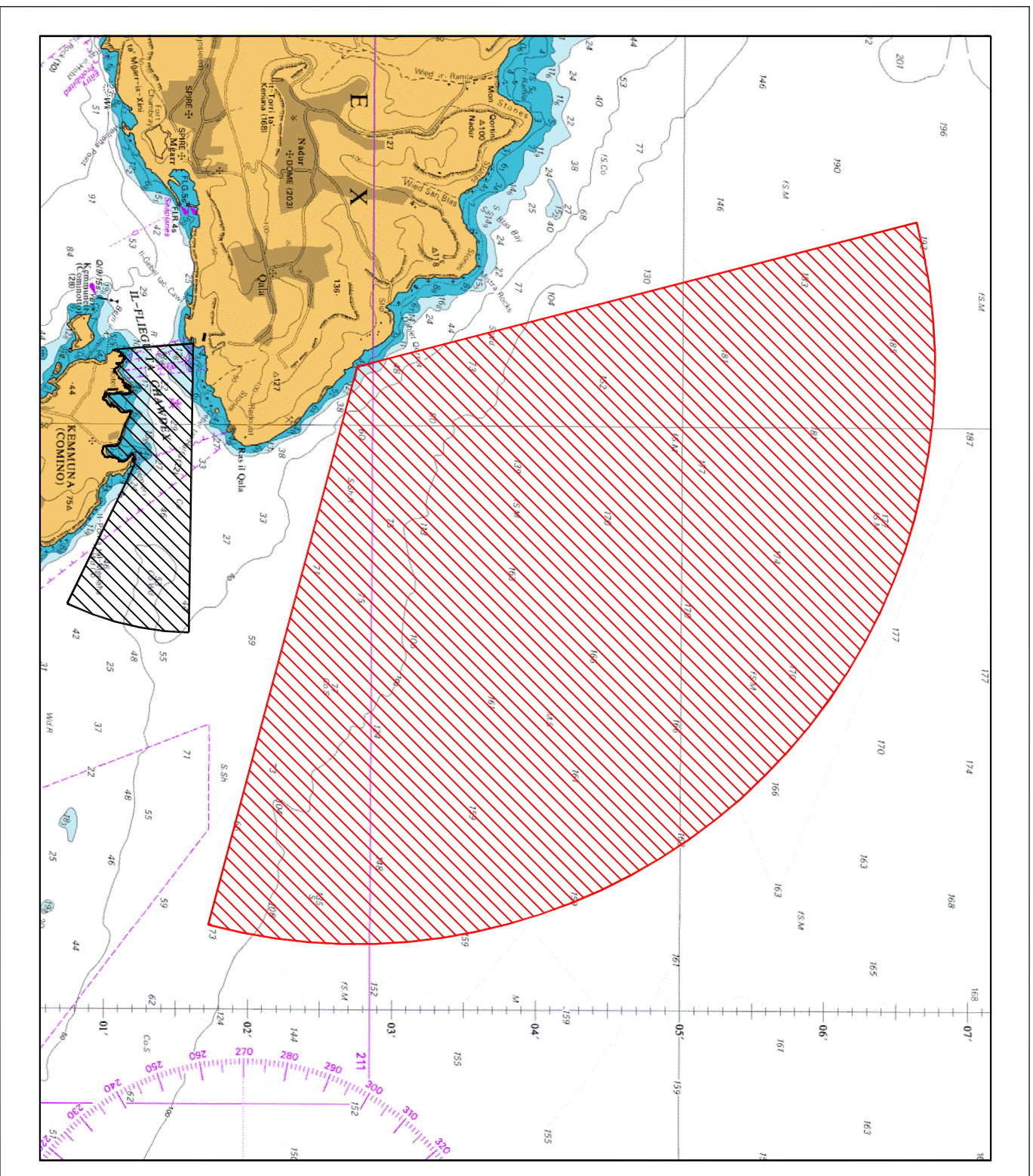


Chart D