



PORTS AND YACHTING DIRECTORATE

Transport Malta

## LOCAL NOTICE TO MARINERS NO 31 of 2016

Our Ref: TM/PYD/26/95/3

Malta Transport Centre  
Marsa, MRS 1917  
Malta

Tel: (356) 2122 2203  
Fax: (356) 2125 0365  
Email: [info.tm@transport.gov.mt](mailto:info.tm@transport.gov.mt)

28 June 2016

[www.transport.gov.mt](http://www.transport.gov.mt)

### **Fireworks Display from Manoel Island in Sliema Creek, Marsamxett Harbour**

The Ports and Yachting Directorate, Transport Malta notifies Mariners that fireworks will be let off from the foreshore of Manoel Island in Sliema Creek, centered in Position:

<b>Latitude (N)</b>	<b>Longitude (E)</b>
<b>35° 54'.319</b>	<b>14° 30'.321</b>

This position is shown on the attached chart. The fireworks displays will take place on the following dates and times

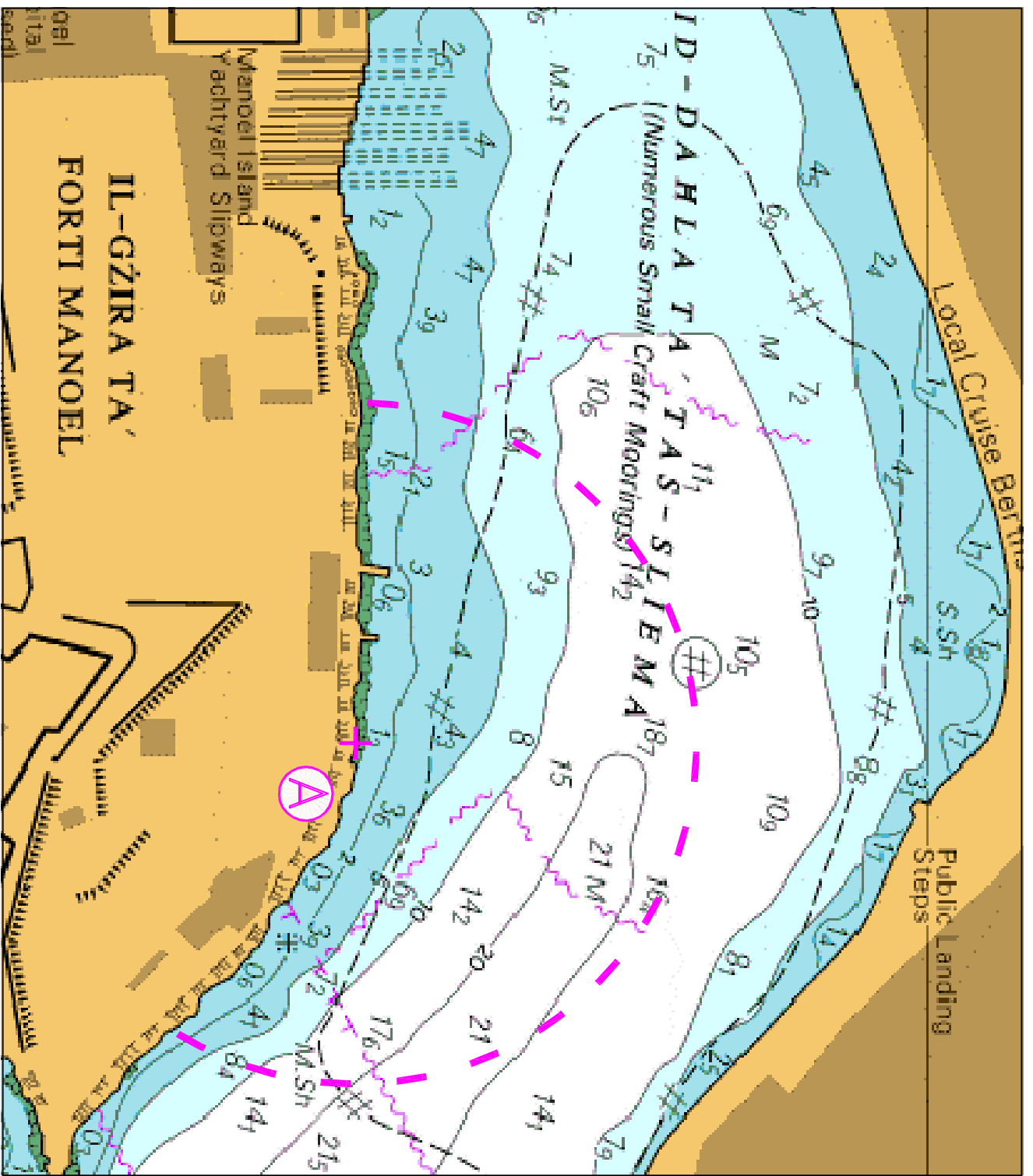
**Saturday, 2 July 2016**      **from 1800 hours till 1830 hours, and between 2100 hours and 2300 hours;**

**Sunday, 3 July 2016**      **from 1900 hours till 1930 hours, and between 2015 hours and 2130 hours;**

In view of the above, mariners are informed that navigation within 200 meters from the above position in Marsamxett Harbour will be prohibited during the time of fireworks. All craft moored within the indicated area (as shown on attached chart) are to be removed on the above-mentioned dates and times of the fireworks displays.

Mariners are to obey directives issued by the Valletta VTS (Valletta Port Control), and by Police in the area.

Chart Affected:      BA 177



©British Crown Copyright 1970, 1983, 1986, 1988, 1989, 1999, 2000.  
All rights reserved

The UK Hydrographic Office makes the accompanying data available to Transport Malta under the terms and conditions of agreement HD 1427/080930/01.

**DISCLAIMER**

While the UK Hydrographic Office has endeavoured to ensure that the material supplied is suitable for the purposes described, it accepts no liability for the maximum extent permitted by law for any damage or loss of any nature arising from its use. The material supplied is used entirely at the Recipient's own risk.