



PORTS AND YACHTING DIRECTORATE

Transport Malta

LOCAL NOTICE TO MARINERS NO 27 of 2016

Our Ref: TM/PYD/22/01/1V

27 May 2016

Malta Transport Centre
Marsa, MRS 1917
Malta

Tel: (356) 2122 2203
Fax: (356) 2125 0365
Email: info.tm@transport.gov.mt

www.transport.gov.mt

Fireworks display from a Barge moored off

Bighi Point – Grand Harbour

The Ports and Yachting Directorate, Transport Malta, notifies mariners that a fireworks display will be held on **Wednesday 1 June 2016 between 2200 hours and 2230 hours**. The barge will be moored in the below position at 1800 hours and removed after the display.

The fireworks will be let off from a barge moored off Bighi Point as shown on the attached chart and in position:

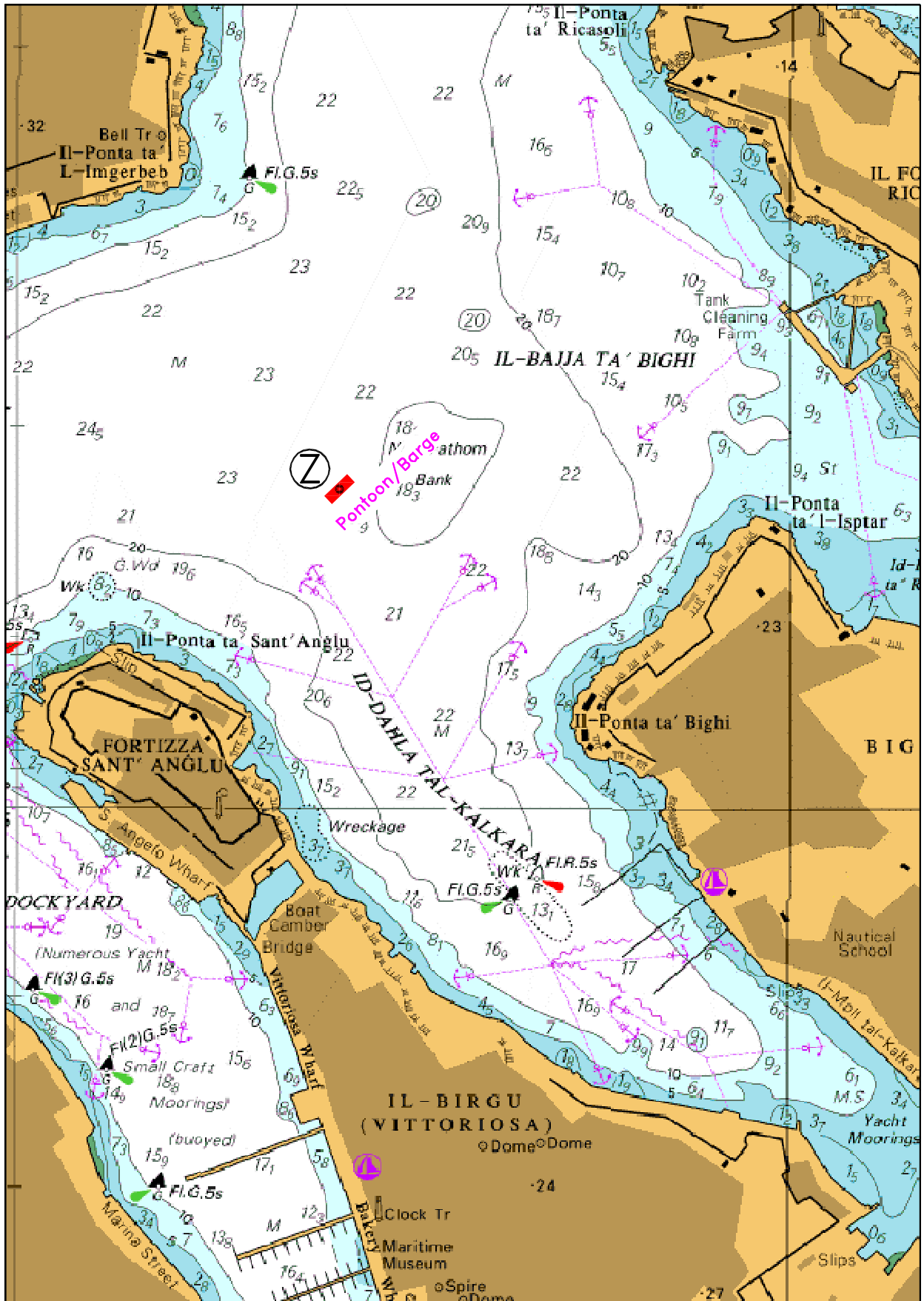
	LATITUDE (N)	LONGITUDE (E)
Z	35°53'.668	014°31'.207

A wide berth of 200 meters is requested from the barge. Vessels navigating in Grand Harbour are to proceed with caution and slow speed. Mariners are to comply with any instructions given by Valletta Port Control (Valletta VTS) on VHF Channel 12.

The Ports and Yachting Directorate, Transport Malta, will not be held responsible or liable in any manner whatsoever for any damages or expenses incurred by any person as a consequence of these fireworks' displays, including for failing to abide and comply with the above directions.

Chart affected BA Chart 177.

Positions are referred to WGS 84 Datum.



©British Crown Copyright 1970, 1983, 1986, 1988, 1999, 2000.
All rights reserved

The UK Hydrographic Office makes the accompanying data available to Transport Malta under the terms and conditions of agreement HD 1427/020930/01.

DISCLAIMER

Whilst the UK Hydrographic Office has endeavoured to ensure that the material supplied is suitable for the purpose described, it accepts no liability (to the maximum extent permitted by law) for any damage or loss of any nature arising from its use. The material supplied is used entirely at the Recipient's own risk.

Point	Latitude (N)	Longitude (E)
Z =	35° 53'.668	014° 31'.207