



PORTS AND YACHTING DIRECTORATE

## LOCAL NOTICE TO MARINERS No 25 of 2016

Our Ref: **TM/PYD/63/00**

**20 May, 2016**



**Transport Malta**

Malta Transport Centre  
Marsa, MRS 1917  
Malta

Tel: (356) 2122 2203  
Fax: (356) 2125 0365  
Email: [info.tm@transport.gov.mt](mailto:info.tm@transport.gov.mt)

[www.transport.gov.mt](http://www.transport.gov.mt)

### **Life + Bahar Project - ROV Surveys - Inshore Malta - 2016**

The Ports and Yachting Directorate notifies mariners that marine surveys will be carried out with the use of Remotely Operated Vehicle (ROV). These surveys will be carried out within the polygons A, B, C, D, E, F, G, H and the intermediate coastline, as shown on attached chart, by the vessel **Ranger**.

Polygon	Latitude (N)	Longitude (E)
<b>A</b>	35° 53'.794	014° 19'.727
	35° 53'.678	014° 19'.521
	35° 52'.740	014° 20'.359
	35° 49'.472	014° 24'.748
	35° 49'.699	014° 24'.996
<b>B</b>	36° 01'.285	014° 13'.159
	36° 01'.111	014° 13'.119
	36° 00'.583	014° 15'.694
	36° 00'.698	014° 15'.695
<b>C</b>	36° 03'.927	014° 16'.516
	36° 04'.480	014° 17'.339
	36° 04'.073	014° 18'.431
	36° 03'.541	014° 18'.615
<b>D</b>	36° 04'.469	014° 11'.199
	36° 04'.775	014° 11'.168
	36° 05'.052	014° 14'.435
	36° 04'.852	014° 14'.442
<b>E</b>	35° 58'.683	014° 19'.399
	35° 58'.530	014° 18'.492
	35° 58'.057	014° 18'.556
	35° 58'.119	014° 19'.396
<b>F</b>	35° 58'.508	014° 21'.139
	35° 58'.013	014° 21'.457



**Transport Malta**

Malta Transport Centre  
Marsa, MRS 1917  
Malta

Tel: (356) 2122 2203  
Fax: (356) 2125 0365  
Email: [info.tm@transport.gov.mt](mailto:info.tm@transport.gov.mt)

[www.transport.gov.mt](http://www.transport.gov.mt)

<b>G</b>	36° 00'.237	014° 19'.459
	36° 00'.695	014° 18'.947
	36° 00'.964	014° 18'.980
	36° 01'.228	014° 19'.380
	36° 01'.332	014° 20'.380
	36° 00'.948	014° 20'.645
<b>H</b>	35° 56'.298	014° 19'.847
	35° 55'.335	014° 20'.005

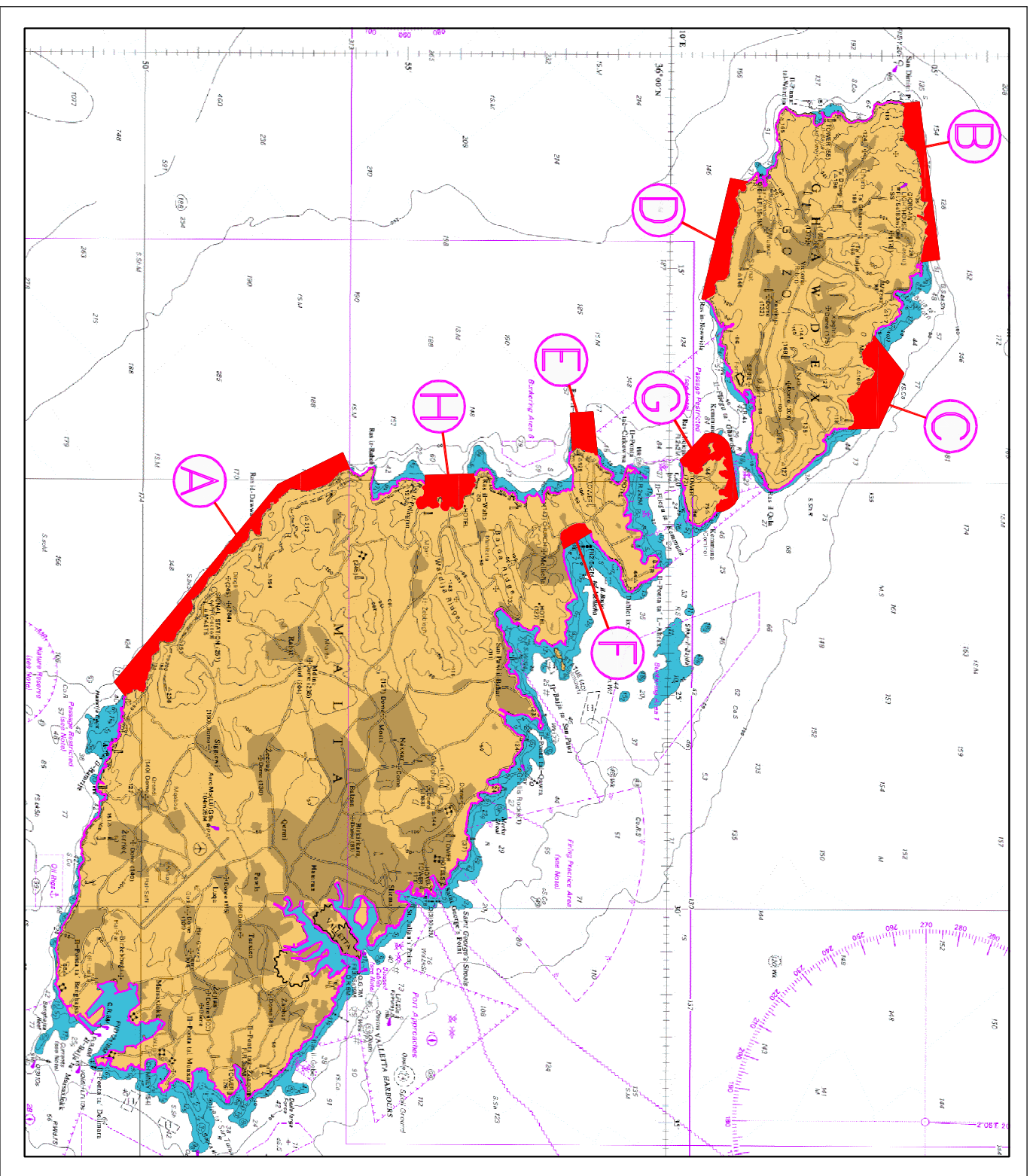
Weather permitting the surveys are scheduled to start on **26<sup>th</sup> May 2016** and are expected to be completed by **15<sup>th</sup> August 2016**. The exact areas of operation depend on the weather conditions and cannot be identified at this stage. The first area being started is within polygon **F**.

Since the vessel will be towing an ROV, it will be restricted in her ability to maneuver.

Mariners are instructed to navigate with caution when the above mentioned vessel is sighted and give a wide berth and observe a 1 nautical mile radius restricted zone which will be implemented around the catamaran vessel **Ranger**.

Further information will be made available through Malta VTS and Valletta Port Control (Valletta VTS) as the survey progresses.

Charts Affected: BA 194, 2124, 2123 INT 301 INT 302



©British Crown Copyright 1970, 1983, 1986, 1988, 1999, 2000.  
All rights reserved

The UK Hydrographic Office makes the accompanying data available to Transport Malta under the terms and conditions of agreement HD 1427/020930/01

#### DISCLAIMER

Whilst the UK Hydrographic Office has endeavoured to ensure that the material supplied is suitable for the purposes described, it accepts no liability (to the maximum extent permitted by law) for any damage or loss of any nature arising from its use. The material supplied is used entirely at the Recipient's own risk.