



PORTS AND YACHTING DIRECTORATE

**Transport Malta**

## LOCAL NOTICE TO MARINERS NO 20 of 2016

Our Ref: **TM/PYD/22/01 Vol V**

**05 May 2016**

Malta Transport Centre  
Marsa, MRS 1917  
Malta

Tel: (356) 2122 2203  
Fax: (356) 2125 0365  
Email: [info.tm@transport.gov.mt](mailto:info.tm@transport.gov.mt)

[www.transport.gov.mt](http://www.transport.gov.mt)

### **Fireworks Displays at Pieta Creek in Marsamxett Harbour.**

The Ports and Yachting Directorate, Transport Malta notifies that firework displays and a hanging waterfall display, placed across the creek, will be let off from the following areas:

- 1) Ro Ro berth of Gozo Ferry at Hay wharf
- 2) From Floating Rafts near the Boathouse

The above sites are indicated on the attached chart

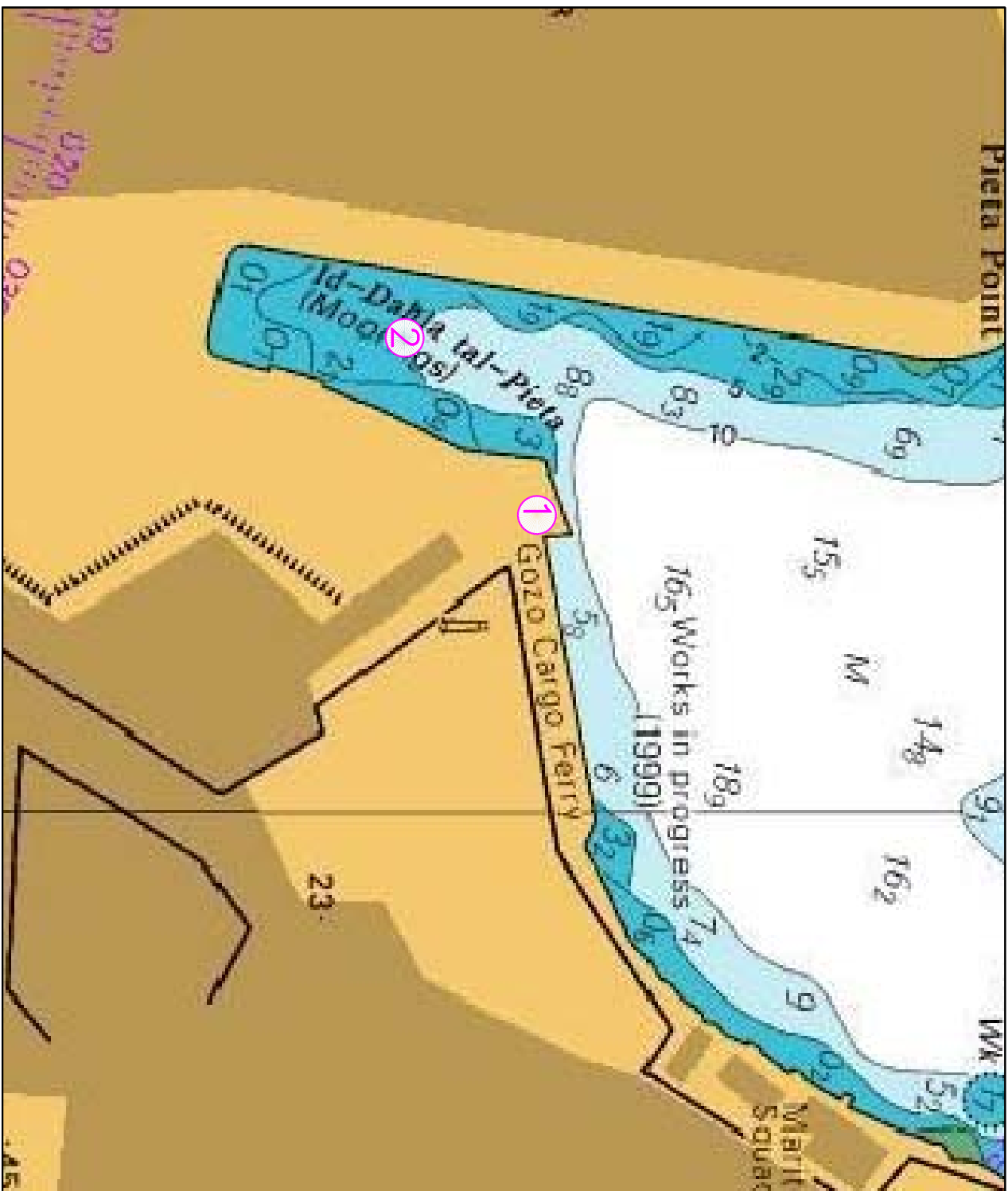
These firework displays will take place between Saturday 4 June 2016 at 2100 hrs and Sunday 5 June 2016 at 0100hrs.

During this day the use of the slipway next to the Boathouse will be restricted.

All masters of vessels berthed at Pieta Creek are warned to remove their vessels from the above sites, keep well clear and maintain a safe distance of not less than 100 metres, during the above-mentioned displays. Mariners are to note the above and navigate with caution and slow speed.

The Ports and Yachting Directorate, Transport Malta, will not be held responsible or liable in any manner whatsoever for any damages or expenses incurred by any person as a consequence of these fireworks' displays, including for failing to abide and comply with the above directions.

Chart Affected: BA 177



©British Crown Copyright 1970, 1983, 1986, 1988, 1999, 2000.  
All rights reserved

The UK Hydrographic Office makes the accompanying data available to Transport Malta under the terms and conditions of agreement HD 1427/020930/01.

**DISCLAIMER**

Whilst the UK Hydrographic Office has endeavoured to ensure that the material supplied is suitable for the purpose described, it accepts no liability (to the maximum extent permitted by law) for any damage or loss of any nature arising from its use. The material supplied is used entirely at the Recipient's own risk.