



PORTS AND YACHTING DIRECTORATE

## LOCAL NOTICE TO MARINERS NO 18 of 2016

Our Ref: TM/PYD/22/01

04 May 2016



Transport Malta

Malta Transport Centre  
Marsa, MRS 1917  
Malta

Tel: (356) 2122 2203  
Fax: (356) 2125 0365  
Email: [info.tm@transport.gov.mt](mailto:info.tm@transport.gov.mt)

[www.transport.gov.mt](http://www.transport.gov.mt)

### Fireworks Display from Manoel Island in Sliema Creek, Marsamxett Harbour

The Ports and Yachting Directorate, Transport Malta notifies Mariners that fireworks will be let off from the foreshore of Manoel Island, centered in Positions:

Position	Latitude (N)	Longitude (E)
A	35° 54'.314	14° 30'.265

The aerial fireworks displays will take place on the following dates and times.

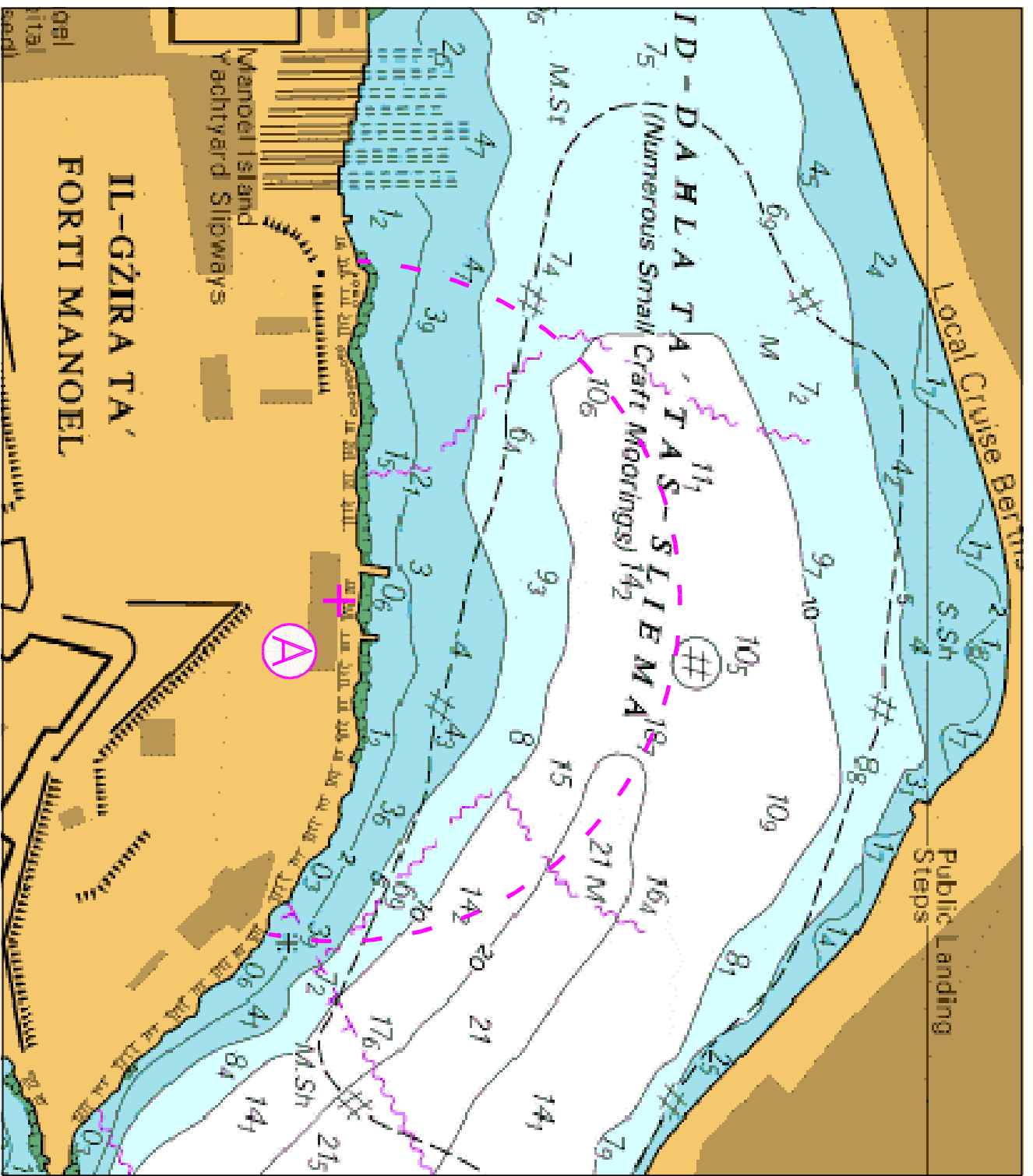
From position **A** as shown on the attached chart,

<b>Friday, 13 May 2016</b>	<b>from 0800 hours till 0930 hours, from 1200 hours till 1210 hours, from 2130 hours till 2300 hours;</b>
<b>Saturday, 14 May 2016</b>	<b>from 0900 hours till 0930 hours, from 1200 hours till 1210 hours, from 1800 hours till 1830 hours and between 2200 hours and 2330 hours;</b>
<b>Sunday, 15 May 2016</b>	<b>from 0900 hours till 0930 hours, from 1200 hours till 1220 hours, from 1930 hours till 2030 hours and between 2130 hours and 2215 hours;</b>

In view of the above, mariners are informed that navigation within 200 meters from the above position **A** in Marsamxett Harbour will be prohibited during the time of fireworks. All craft moored within the indicated areas (as shown on attached chart) are to be removed on the above-mentioned dates and times of the fireworks displays. The Ports and Yachting Directorate, Transport Malta, will not be held responsible or liable in any manner whatsoever for any damages or expenses incurred by any person as a consequence of these fireworks' displays, including for failing to abide and comply with the above directions.

Mariners are to obey directives issued by the Valletta VTS (Valletta Port Control), and by Police in the area.

Chart Affected: BA 177



©British Crown Copyright 1970, 1983, 1986, 1988, 1989, 1999, 2000.  
All rights reserved

The UK Hydrographic Office makes the accompanying data available to Transport Malta under the terms and conditions of agreement HD 1427/080930/01.

**DISCLAIMER**

While the UK Hydrographic Office has endeavoured to ensure that the material supplied is suitable for the purposes described, it accepts no liability for the maximum extent permitted by law for any damage or loss of any nature arising from its use. The material supplied is used entirely at the Recipient's own risk.