



PORTS AND YACHTING DIRECTORATE

Transport Malta

## LOCAL NOTICE TO MARINERS NO15 of 2016

Our Ref: TM/PYD/111/92

25 April 2016

Malta Transport Centre  
Marsa, MRS 1917  
Malta

Tel: (356) 2122 2203  
Fax: (356) 2125 0365  
Email: [info.tm@transport.gov.mt](mailto:info.tm@transport.gov.mt)

[www.transport.gov.mt](http://www.transport.gov.mt)

### Blue Lagoon and Santa Maria Bay Comino: Swimmers' Zones

The Ports and Yachting Directorate, Transport Malta notifies all bathers, mariners and owners of vessels that the following arrangements will be made for Blue Lagoon and Santa Maria Bay in the North Comino channel for the period between 1 May 2016 and 15 October 2016

#### 1a) Blue Lagoon Swimmers' Zone

No vessels or objects which may endanger the safety of bathers shall be used within a swimmers' zone. The swimmers' zone is being reserved exclusively for bathers and is delineated by the following coordinates:-

POSITIONS	LATITUDE (N)	LONGITUDE (E)	
1A	36° 00'.893	14° 19'.281	(Shore)
1B	36° 00'.898	14° 19'.289	
1C	36° 00'.825	14° 19'.351	
1D	36° 00'.846	14° 19'.440	
1E	36° 00'.854	14° 19'.448	(Shore)
1F	36° 00'.751	14° 19'.471	(Shore)
1G	36° 00'.740	14° 19'.390	(Shore)

#### 1b) Mooring areas for Commercial vessels

2 mooring areas are being assigned for Commercial vessels. The boundaries of these mooring areas are delineated by the following coordinates:-

POSITIONS	LATITUDE (N)	LONGITUDE (E)	
4	36° 01'.004	14° 19'.397	(Shore)
5	<b>36° 00'.965</b>	<b>14° 19'.332</b>	<b>(Buoy)</b>
6	36° 00'.927	14° 19'.364	
7	36° 00'.974	14° 19'.425	(Shore)
8	36° 00'.920	14° 19'.458	(Shore)
9	36° 00'.941	14° 19'.433	
10	36° 00'.904	14° 19'.383	
11	36° 00'.859	14° 19'.421	
12	36° 00'.866	14° 19'.439	(Shore)



Transport Malta

### 1c) Fairway

A fairway has been established as indicated in the chart attached Figure 1 and in the following positions. Special marks fitted with a yellow light flashing every 5 seconds will be placed at points **1, 2, 3** and **5**.

Points	Latitude (N)	Longitude (E)	
<b>1</b>	<b>36° 00'.852</b>	<b>14° 19'.401</b>	<b>(Buoy)</b>
<b>2</b>	<b>36° 00'.913</b>	<b>14° 19'.346</b>	<b>(Buoy)</b>
<b>3</b>	<b>36° 00'.952</b>	<b>14° 19'.310</b>	<b>(Buoy)</b>
<b>5</b>	<b>36° 00'.965</b>	<b>14° 19'.332</b>	<b>(Buoy)</b>
11	36° 00'.859	14° 19'.421	

### 10a) Santa Maria Bay (Inner) Swimmers' Zone

No vessels or objects which may endanger the safety of bathers shall be used within the swimmers' zones. The swimmers' zones which are being reserved exclusively for bathers and are delineated by the following coordinates:-

POSITIONS	LATITUDE (N)	LONGITUDE (E)	
10A	36° 00'.996	14° 20'.180	(Shore)
10B	36° 01'.001	14° 20'.185	
10C	36° 00'.997	14° 20'.247	
10D	36° 00'.984	14° 20'.249	(Shore)

### 10b) Fairway

A fairway has been established as indicated in the chart attached Figure 10 and in the following positions. Special mark yellow buoys will be placed at points **1** and **2**

Points	Latitude (N)	Longitude (E)	
V	36° 00'.852	14° 19'.401	(Shore)
<b>1</b>	<b>36° 00'.913</b>	<b>14° 19'.346</b>	<b>(Buoy)</b>
X	36° 00'.952	14° 19'.310	
<b>2</b>	<b>36° 00'.965</b>	<b>14° 19'.332</b>	<b>(Buoy)</b>
Z	36° 00'.859	14° 19'.421	(Shore)



**Transport Malta**

The fairways are to be used solely for navigation and should otherwise be kept clear.

A minimum safety clearing distance of 5 metres from the swimmers' zone is to be maintained.

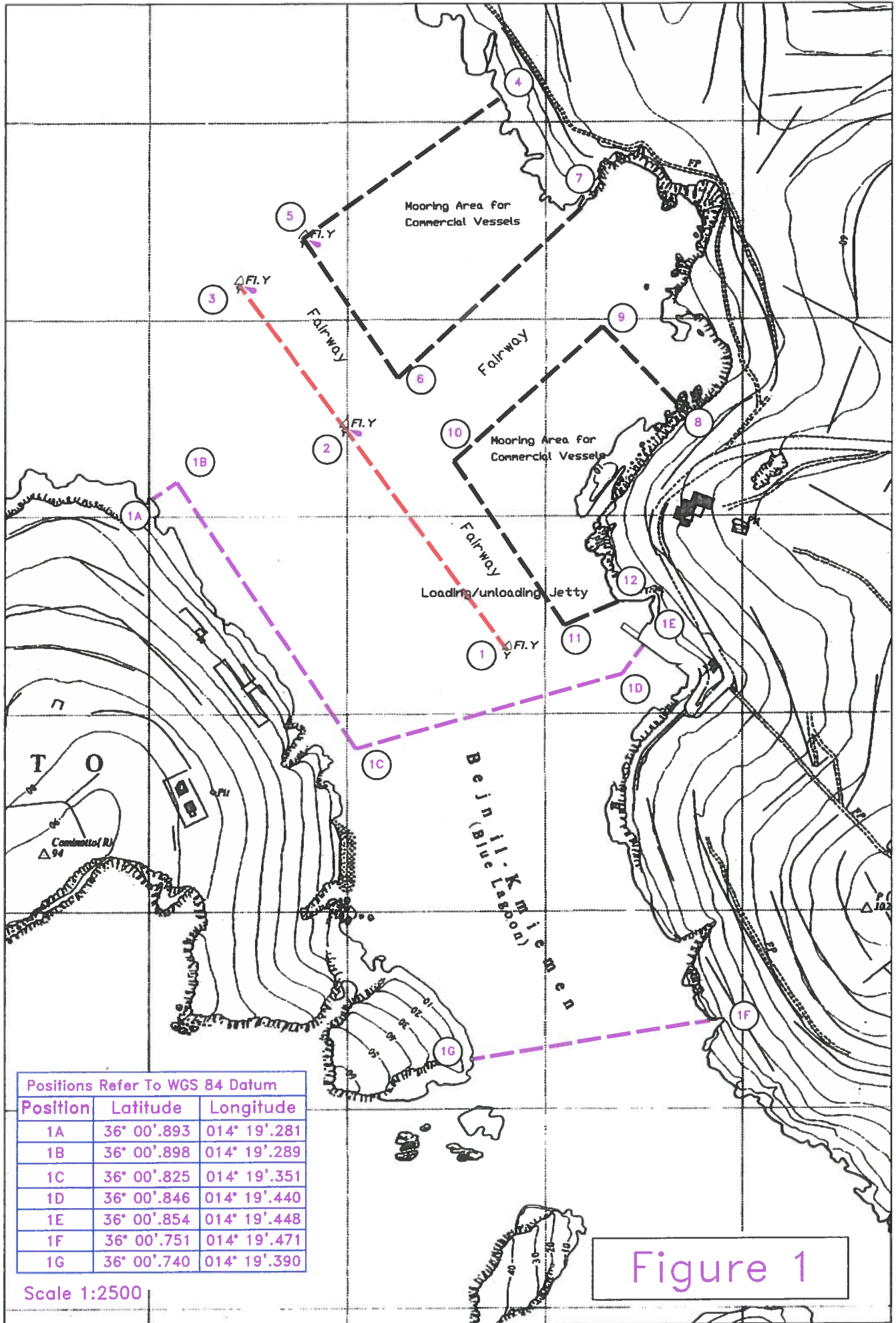
Nylon ropes supported by floats will delineate the swimmers' zone and may remain in place, two weeks after the stipulated date.

For the benefit and safety of all bathers and mariners, Transport Malta urges all visitors and commercial vessels to adhere to these arrangements. Enforcement Officers will be constantly patrolling the area.

Mariners are advised to keep a good lookout and navigate with caution and at slow speed in the North Comino Channel at Blue Lagoon and Santa Maria Bay. They are also reminded that it is prohibited to secure/moor any vessel to any of the marker buoys, swimmers' zone delineation markers and related gear belonging to Transport Malta.

All positions are referred to WGS 84 DATUM.

Chart Affected: BA 211



Positions Refer To WGS 84 Datum		
Position	Latitude	Longitude
10A	36° 00'.996	014° 20'.180
10B	36° 01'.001	014° 20'.185
10C	36° 00'.997	014° 20'.247
10D	36° 00'.984	014° 20'.249

Scale 1:2500

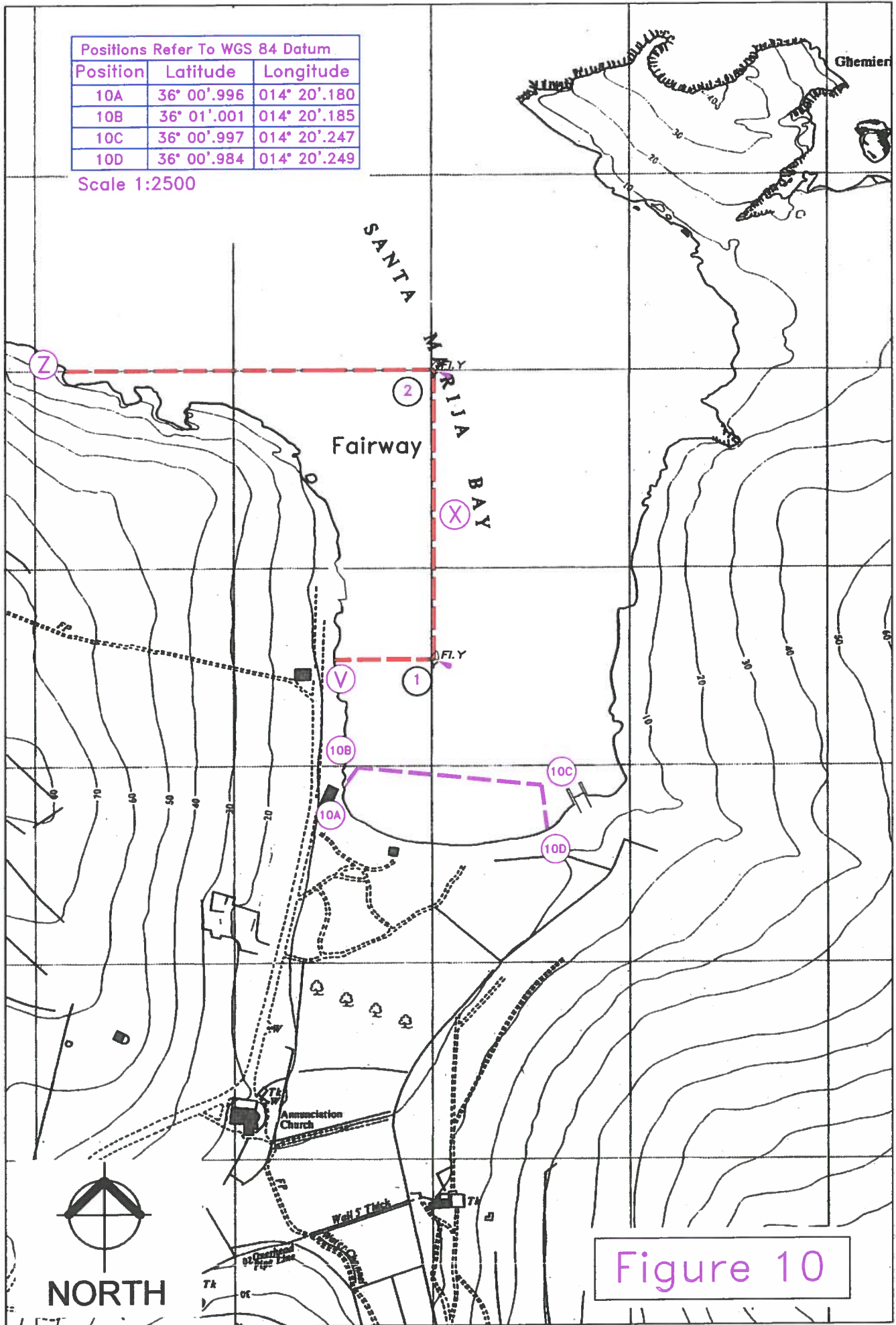


Figure 10