



PORTS AND YACHTING DIRECTORATE

Transport Malta

LOCAL NOTICE TO MARINERS NO 20 of 2015

Our Ref: TM/PYD/111/92

29 April 2015

Malta Transport Centre
Marsa, MRS 1917
Malta

Tel: (356) 2122 2203
Fax: (356) 2125 0365
Email: info.tm@transport.gov.mt

www.transport.gov.mt

Blue Lagoon, Comino: Swimmers' Zone

The Ports and Yachting Directorate, Transport Malta notifies all bathers, mariners and owners of sea craft that the following arrangements will be made for Blue Lagoon in the channel between Comino and Cominotto for the period between 1 May 2015 and 15 October 2015

1) Swimmers' Zone

No vessels or objects which may endanger the safety of bathers shall be used within a swimmers' zone. The swimmers' zone which is being reserved exclusively for bathers and is delineated by the following coordinates:-

POSITIONS	LATITUDE (N)	LONGITUDE (E)	
1A	36° 00'.893	14° 19'.281	(Shore)
1B	36° 00'.898	14° 19'.289	
1C	36° 00'.825	14° 19'.351	
1D	36° 00'.846	14° 19'.440	
1E	36° 00'.854	14° 19'.448	(Shore)
1F	36° 00'.751	14° 19'.471	(Shore)
1G	36° 00'.740	14° 19'.390	(Shore)

2) Mooring areas for Commercial vessels

2 mooring areas are being assigned for Commercial vessels. The boundaries of these mooring areas are delineated by the following coordinates:-

POSITIONS	LATITUDE (N)	LONGITUDE (E)	
4	36° 01'.004	14° 19'.397	(Shore)
5	36° 00'.973	14° 19'.345	(Buoy)
6	36° 00'.933	14° 19'.372	
7	36° 00'.974	14° 19'.425	(Shore)
8	36° 00'.920	14° 19'.458	(Shore)
9	36° 00'.941	14° 19'.433	
10	36° 00'.908	14° 19'.388	
11	36° 00'.859	14° 19'.421	
12	36° 00'.866	14° 19'.439	(Shore)



3) Fairway

A fairway has been established as indicated in the chart attached and in the following positions. Special marks fitted with a yellow light flashing every 5 seconds will be placed at points 1, 2, 3 and 5.

Points	Latitude (N)	Longitude (E)	
1	36° 00'.852	14° 19'.401	(Buoy)
2	36° 00'.920	14° 19'.356	(Buoy)
3	36° 00'.962	14° 19'.327	(Buoy)
5	36° 00'.973	14° 19'.345	(Buoy)
11	36° 00'.859	14° 19'.421	

The fairway is to be used solely for navigation and should otherwise be kept clear.

A minimum safety clearing distance of 5 metres from the swimmers' zone is to be maintained.

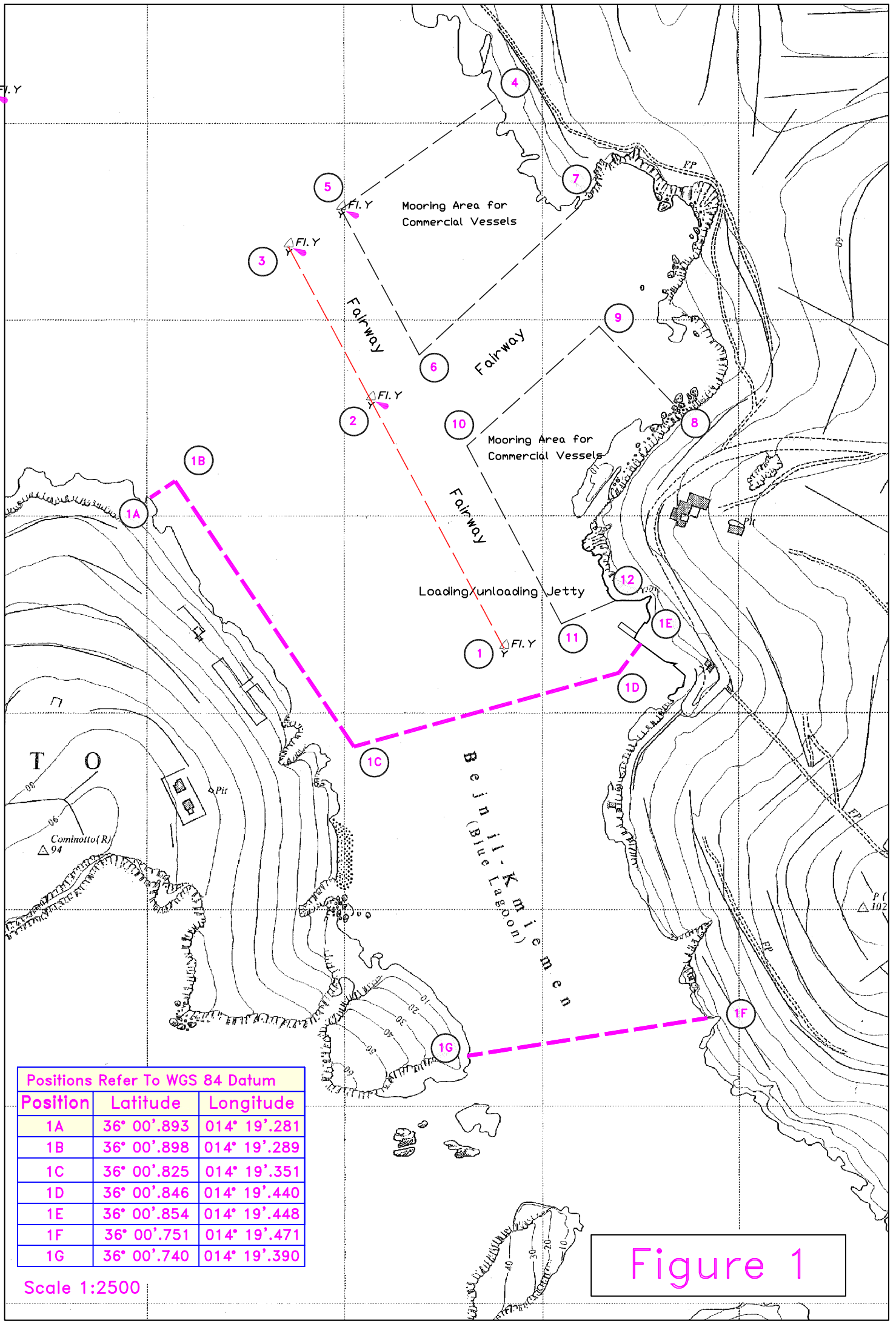
Nylon ropes supported by floats will delineate the swimmers' zone and may remain in place, two weeks after the stipulated date.

For the benefit and safety of all bathers and mariners, Transport Malta urges all visitors and commercial vessels to adhere to these arrangements. Enforcement Officers will be constantly patrolling the area.

Mariners are advised to keep a good lookout and navigate with caution and at slow speed in the Channel between Comino and Cominotto. They are also reminded that it is prohibited to secure/moor any vessel to any of the marker buoys, swimmers' zone delineation markers and related gear belonging to Transport Malta.

All positions are referred to WGS 84 DATUM.

Chart Affected: BA 211



Positions Refer To WGS 84 Datum

Position	Latitude	Longitude
1A	36° 00'.893	014° 19'.281
1B	36° 00'.898	014° 19'.289
1C	36° 00'.825	014° 19'.351
1D	36° 00'.846	014° 19'.440
1E	36° 00'.854	014° 19'.448
1F	36° 00'.751	014° 19'.471
1G	36° 00'.740	014° 19'.390

Scale 1:2500

Figure 1